

KEY :-

shading type	meaning	relevant articles	shading type	meaning	relevant articles
	Boundary of area within which Red Route controls apply (restricted hours Monday to Saturday, 7am - 7pm)	3.1.1 3.1.2		5. Parts of red route where exemptions apply for parking solo motor cycles.	3.2.3
	1. Parts of red route where 'no stopping' controls apply between 7am - 7pm on any day.	3.1.6		6. Parts of red route where exemptions apply for parking vehicles which display a disabled persons badge in the relevant position.	3.2.5
	2. Parts of red route where 'no stopping' controls apply at any time.	3.1.7		7. Parts of red route where exemptions apply to allow loading and unloading.	3.2.7
	3. Parts of red route where 'Red Route Bus Clearway' controls apply.	3.1.8		8. Parts of red route where exemptions apply to allow either loading and unloading or for parking vehicles which display a disabled persons badge in the relevant position.	3.2.9
	4. Parts of the red route where exemptions apply to allow parking.	3.2.1		9. Parts of red route where exemptions apply for parking buses	3.2.12

All times are inclusive

- Proposed Kerb Line
- Existing kerb line
- Proposed restrictions shown highlighted blue (Drawing amendments required to reflect changes to national guidance, that do not impact upon kerbside restrictions, are not highlighted for clarity)

Area of : BUS CLEARWAY
no stopping period: AT ANY TIME
specified hours: AT ANY TIME
maximum period: N/A
no return interval: N/A

Area of : BUS CLEARWAY
no stopping period: AT ANY TIME
specified hours: AT ANY TIME
maximum period: N/A
no return interval: N/A

Area of : LOADING
no stopping period: AT ANY TIME
specified hours: AT ANY TIME
maximum period: 20 MINUTES
no return interval: N/A

Area of : PARKING
no stopping period: MON - SAT 7AM - 7PM
specified hours: MON - SAT 7AM - 7PM
maximum period: 1 HOUR
no return interval: 1 HOUR

10/05/23
DATE

P01
REV.

FIRST ISSUE
REVISIONS

NH
DRN

PE
PM

Birmingham City Council

SCHEME
WALSALL ROAD ETC BIRMINGHAM

DRAWING
BIRMINGHAM CITY COUNCIL
(WALSALL ROAD ETC BIRMINGHAM)
(RED ROUTE)
ORDER 2022
TRAFFIC REGULATION ORDER PLAN
PLAN NO. 2 OF 24
EFFECTIVE DATE:

DRAWN
RS

DESIGNER
AEC

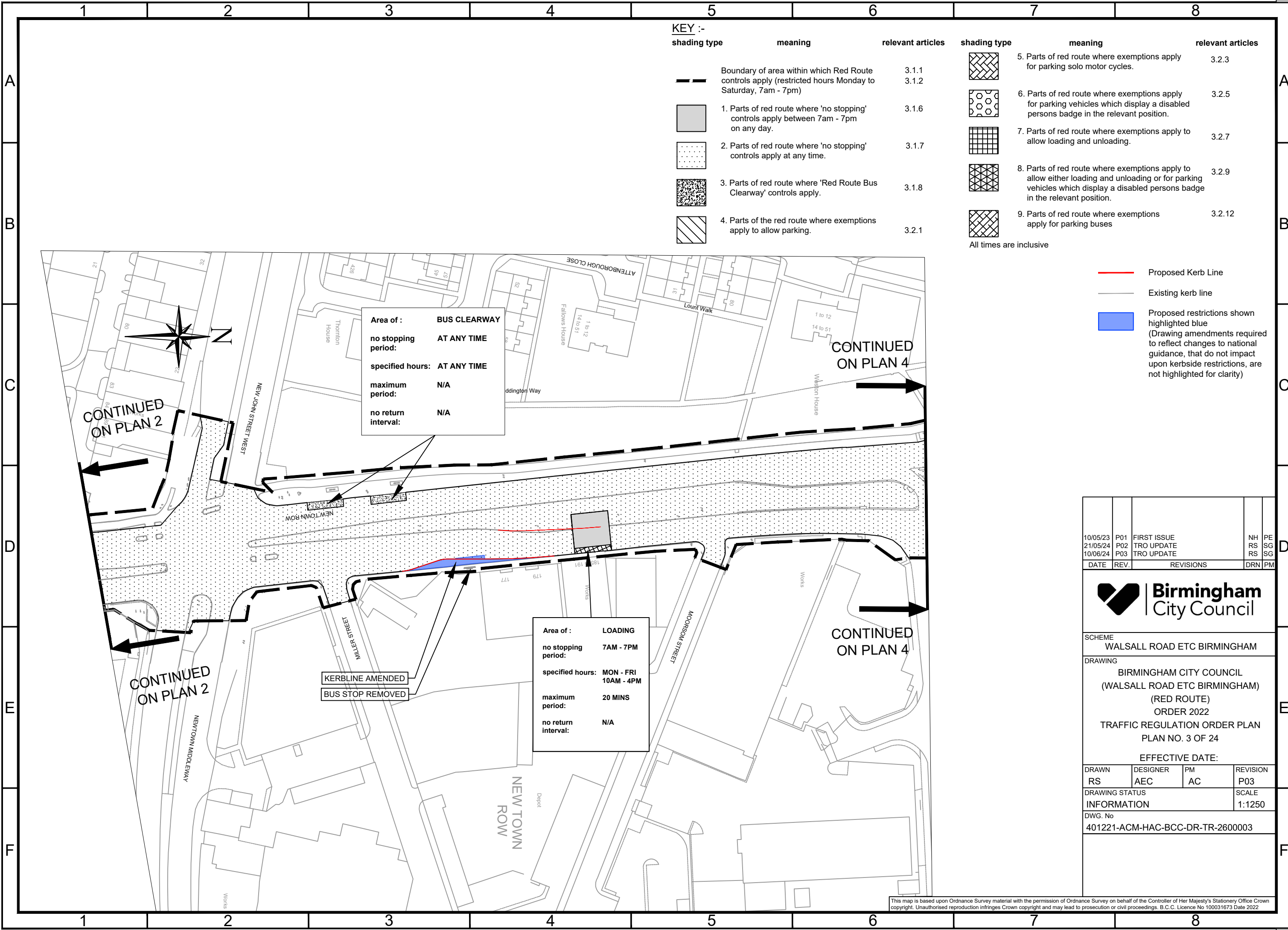
PM
AC

REVISION
P01

DRAWING STATUS
INFORMATION

DWG. No
401221-ACM-HAC-BCC-DR-TR-2600002

SCALE
1:1250



KEY :-					
shading type	meaning	relevant articles	shading type	meaning	relevant articles
	Boundary of area within which Red Route controls apply (restricted hours Monday to Saturday, 7am - 7pm)	3.1.1 3.1.2		5. Parts of red route where exemptions apply for parking solo motor cycles.	3.2.3
	1. Parts of red route where 'no stopping' controls apply between 7am - 7pm on any day.	3.1.6		6. Parts of red route where exemptions apply for parking vehicles which display a disabled persons badge in the relevant position.	3.2.5
	2. Parts of red route where 'no stopping' controls apply at any time.	3.1.7		7. Parts of red route where exemptions apply to allow loading and unloading.	3.2.7
	3. Parts of red route where 'Red Route Bus Clearway' controls apply.	3.1.8		8. Parts of red route where exemptions apply to allow either loading and unloading or for parking vehicles which display a disabled persons badge in the relevant position.	3.2.9
	4. Parts of the red route where exemptions apply to allow parking.	3.2.1		9. Parts of red route where exemptions apply for parking buses	3.2.12
			All times are inclusive		

Area of : **BUS CLEARWAY**
no stopping period: **AT ANY TIME**
specified hours: **AT ANY TIME**
maximum period: **N/A**
no return interval: **N/A**

Area of : **LOADING**
no stopping period: **7AM - 7PM**
specified hours: **MON - FRI 10AM - 4PM**
maximum period: **20 MINS**
no return interval: **N/A**

KERBLINE AMENDED
BUS STOP REMOVED

Proposed Kerb Line
 Existing kerb line
 Proposed restrictions shown highlighted blue
(Drawing amendments required to reflect changes to national guidance, that do not impact upon kerbside restrictions, are not highlighted for clarity)

10/05/23
21/05/24
10/06/24

P01
P02
P03

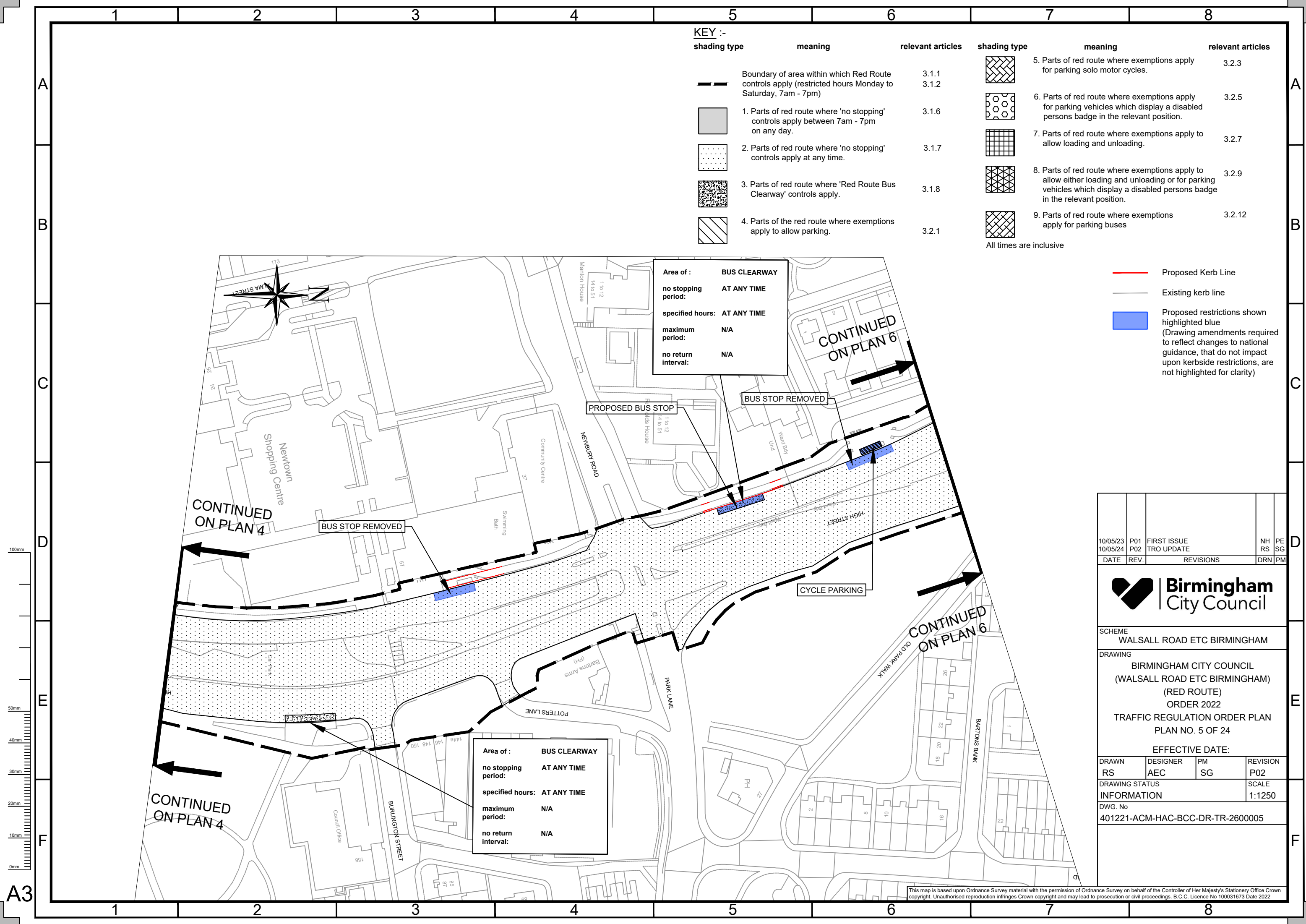
FIRST ISSUE
TRO UPDATE
TRO UPDATE

NH
RS
RS

PE
SG
SG

DATE	REV.	REVISIONS	DRN	PM
SCHEME WALSALL ROAD ETC BIRMINGHAM				
DRAWING BIRMINGHAM CITY COUNCIL (WALSALL ROAD ETC BIRMINGHAM) (RED ROUTE) ORDER 2022 TRAFFIC REGULATION ORDER PLAN PLAN NO. 3 OF 24				
EFFECTIVE DATE:				
DRAWN RS	DESIGNER AEC	PM AC	REVISION P03	
DRAWING STATUS INFORMATION			SCALE 1:1250	
DWG. No 401221-ACM-HAC-BCC-DR-TR-2600003				

This map is based upon Ordnance Survey material with the permission of Ordnance Survey on behalf of the Controller of Her Majesty's Stationery Office Crown copyright. Unauthorised reproduction infringes Crown copyright and may lead to prosecution or civil proceedings. B.C.C. Licence No 100031673 Date 2022



KEY :-

shading type	meaning	relevant articles	shading type	meaning	relevant articles
	Boundary of area within which Red Route controls apply (restricted hours Monday to Saturday, 7am - 7pm)	3.1.1 3.1.2		5. Parts of red route where exemptions apply for parking solo motor cycles.	3.2.3
	1. Parts of red route where 'no stopping' controls apply between 7am - 7pm on any day.	3.1.6		6. Parts of red route where exemptions apply for parking vehicles which display a disabled persons badge in the relevant position.	3.2.5
	2. Parts of red route where 'no stopping' controls apply at any time.	3.1.7		7. Parts of red route where exemptions apply to allow loading and unloading.	3.2.7
	3. Parts of red route where 'Red Route Bus Clearway' controls apply.	3.1.8		8. Parts of red route where exemptions apply to allow either loading and unloading or for parking vehicles which display a disabled persons badge in the relevant position.	3.2.9
	4. Parts of the red route where exemptions apply to allow parking.	3.2.1		9. Parts of red route where exemptions apply for parking buses	3.2.12
All times are inclusive					

- Proposed Kerb Line
- Existing kerb line
- Proposed restrictions shown highlighted blue (Drawing amendments required to reflect changes to national guidance, that do not impact upon kerbside restrictions, are not highlighted for clarity)

Area of : **BUS CLEARWAY**
no stopping period: **AT ANY TIME**
specified hours: **AT ANY TIME**
maximum period: **N/A**
no return interval: **N/A**

Area of : **BUS CLEARWAY**
no stopping period: **AT ANY TIME**
specified hours: **AT ANY TIME**
maximum period: **N/A**
no return interval: **N/A**

10/05/23
10/05/24

P01
P02

FIRST ISSUE
TRO UPDATE

NH
RS

PE
SG

DATE	REV.	REVISIONS	DRN	PM

Birmingham
City Council

SCHEME
WALSALL ROAD ETC BIRMINGHAM

DRAWING
BIRMINGHAM CITY COUNCIL
(WALSALL ROAD ETC BIRMINGHAM)
(RED ROUTE)
ORDER 2022
TRAFFIC REGULATION ORDER PLAN
PLAN NO. 5 OF 24

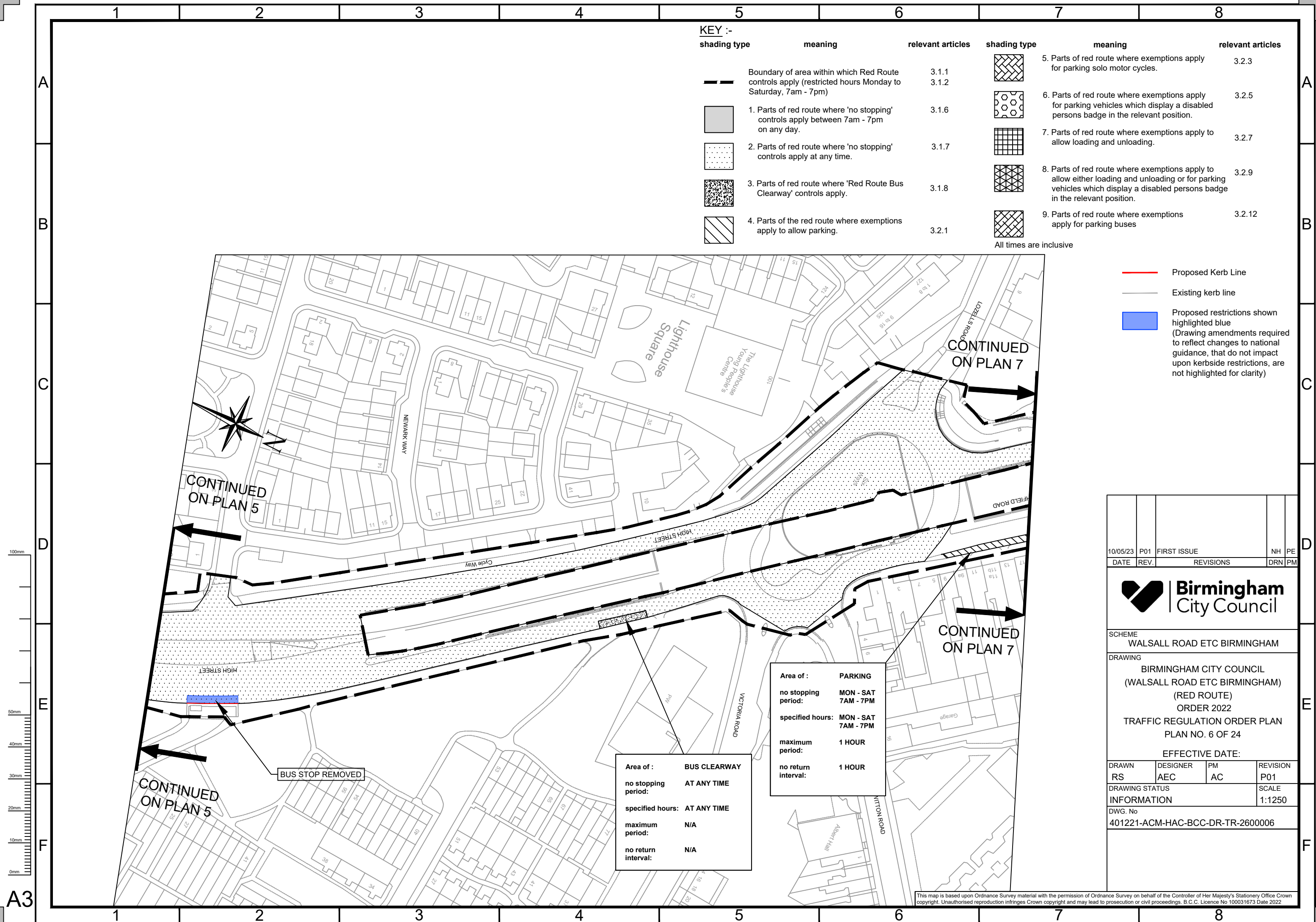
EFFECTIVE DATE:

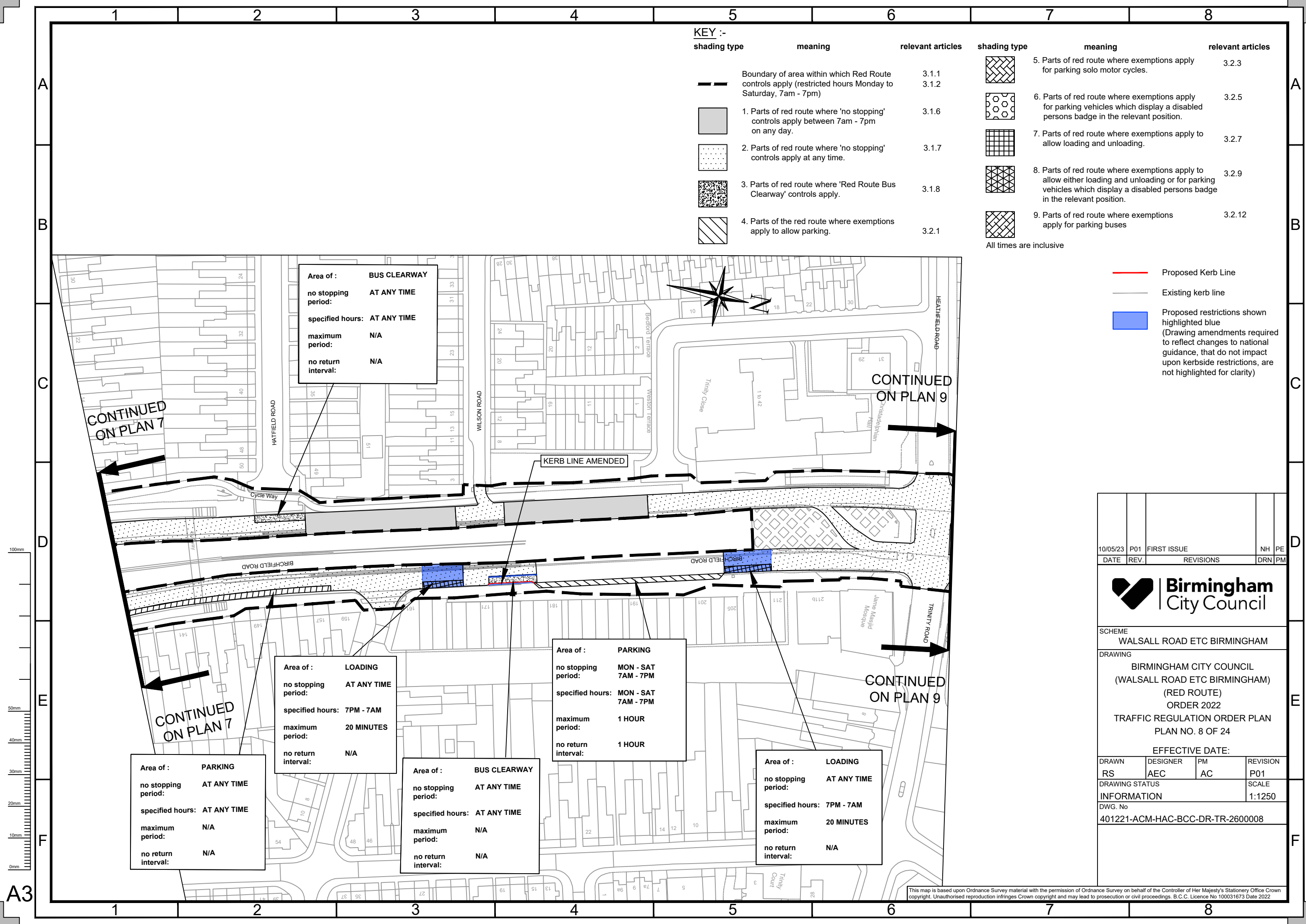
DRAWN RS	DESIGNER AEC	PM SG	REVISION P02
-------------	-----------------	----------	-----------------

DRAWING STATUS
INFORMATION

DWG. No
401221-ACM-HAC-BCC-DR-TR-2600005

SCALE
1:1250





KEY :-					
shading type	meaning	relevant articles	shading type	meaning	relevant articles
	Boundary of area within which Red Route controls apply (restricted hours Monday to Saturday, 7am - 7pm)	3.1.1 3.1.2		5. Parts of red route where exemptions apply for parking solo motor cycles.	3.2.3
	1. Parts of red route where 'no stopping' controls apply between 7am - 7pm on any day.	3.1.6		6. Parts of red route where exemptions apply for parking vehicles which display a disabled persons badge in the relevant position.	3.2.5
	2. Parts of red route where 'no stopping' controls apply at any time.	3.1.7		7. Parts of red route where exemptions apply to allow loading and unloading.	3.2.7
	3. Parts of red route where 'Red Route Bus Clearway' controls apply.	3.1.8		8. Parts of red route where exemptions apply to allow either loading and unloading or for parking vehicles which display a disabled persons badge in the relevant position.	3.2.9
	4. Parts of the red route where exemptions apply to allow parking.	3.2.1		9. Parts of red route where exemptions apply for parking buses	3.2.12
			All times are inclusive		

- Proposed Kerb Line
- Existing kerb line
- Proposed restrictions shown highlighted blue (Drawing amendments required to reflect changes to national guidance, that do not impact upon kerbside restrictions, are not highlighted for clarity)

10/05/23
DATE

P01
REV.

FIRST ISSUE

NH
DRN

PE
PM

Birmingham City Council

SCHEME
WALSALL ROAD ETC BIRMINGHAM

DRAWING
BIRMINGHAM CITY COUNCIL
(WALSALL ROAD ETC BIRMINGHAM)
(RED ROUTE)
ORDER 2022
TRAFFIC REGULATION ORDER PLAN
PLAN NO. 8 OF 24

EFFECTIVE DATE:

DRAWN
RS

DESIGNER
AEC

PM
AC

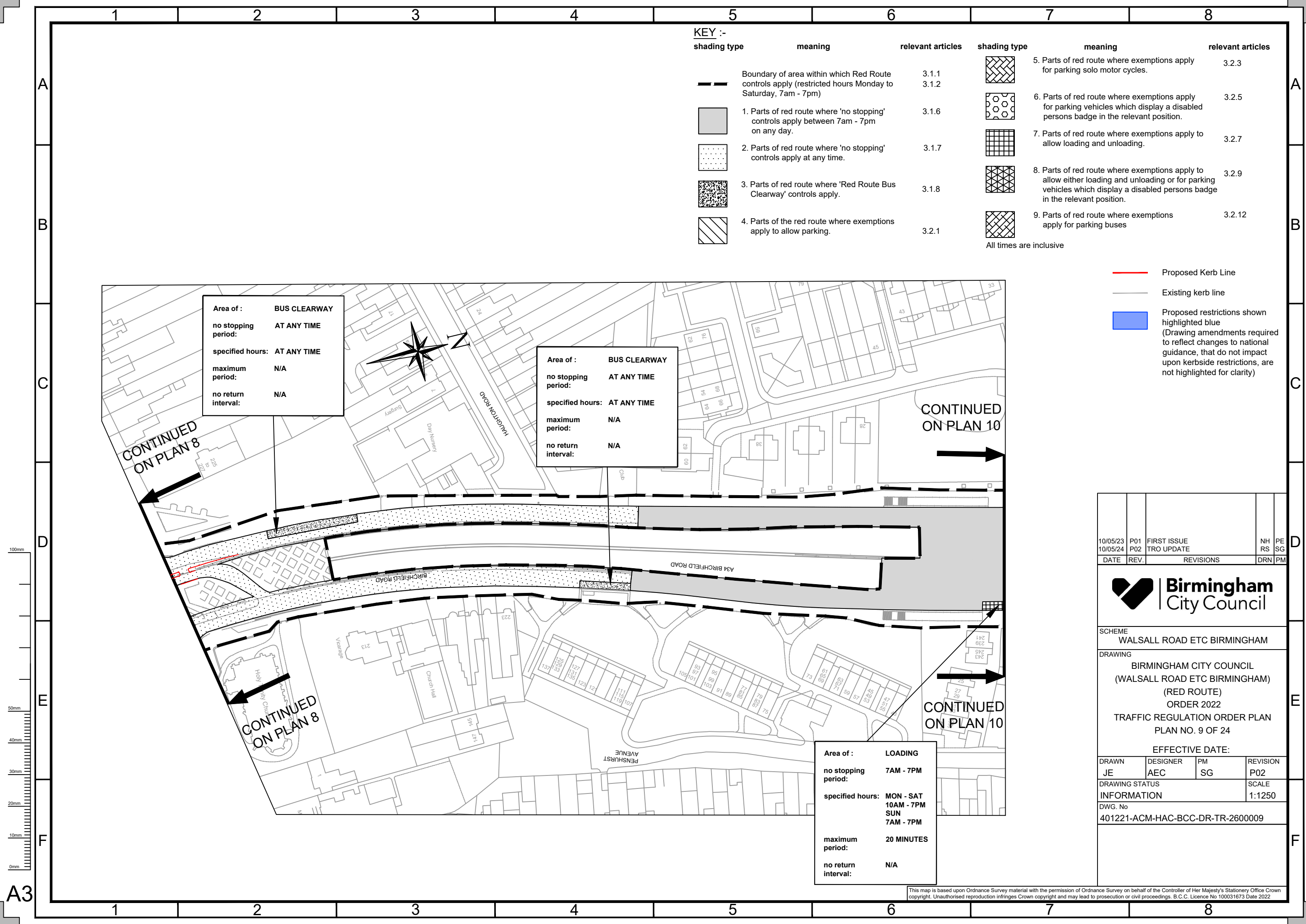
REVISION
P01

DRAWING STATUS
INFORMATION

DWG. No
401221-ACM-HAC-BCC-DR-TR-2600008

SCALE
1:1250

This map is based upon Ordnance Survey material with the permission of Ordnance Survey on behalf of the Controller of Her Majesty's Stationery Office Crown copyright. Unauthorised reproduction infringes Crown copyright and may lead to prosecution or civil proceedings. B.C.C. Licence No 100031673 Date 2022



KEY :-

shading type	meaning	relevant articles	shading type	meaning	relevant articles
	Boundary of area within which Red Route controls apply (restricted hours Monday to Saturday, 7am - 7pm)	3.1.1 3.1.2		5. Parts of red route where exemptions apply for parking solo motor cycles.	3.2.3
	1. Parts of red route where 'no stopping' controls apply between 7am - 7pm on any day.	3.1.6		6. Parts of red route where exemptions apply for parking vehicles which display a disabled persons badge in the relevant position.	3.2.5
	2. Parts of red route where 'no stopping' controls apply at any time.	3.1.7		7. Parts of red route where exemptions apply to allow loading and unloading.	3.2.7
	3. Parts of red route where 'Red Route Bus Clearway' controls apply.	3.1.8		8. Parts of red route where exemptions apply to allow either loading and unloading or for parking vehicles which display a disabled persons badge in the relevant position.	3.2.9
	4. Parts of the red route where exemptions apply to allow parking.	3.2.1		9. Parts of red route where exemptions apply for parking buses	3.2.12
All times are inclusive					

Area of : BUS CLEARWAY
no stopping period: AT ANY TIME
specified hours: AT ANY TIME
maximum period: N/A
no return interval: N/A

Area of : BUS CLEARWAY
no stopping period: AT ANY TIME
specified hours: AT ANY TIME
maximum period: N/A
no return interval: N/A

Area of : LOADING
no stopping period: 7AM - 7PM
specified hours: MON - SAT 10AM - 7PM
SUN 7AM - 7PM
maximum period: 20 MINUTES
no return interval: N/A

- Proposed Kerb Line
- Existing kerb line
- Proposed restrictions shown highlighted blue (Drawing amendments required to reflect changes to national guidance, that do not impact upon kerbside restrictions, are not highlighted for clarity)

10/05/23
10/05/24

P01
P02

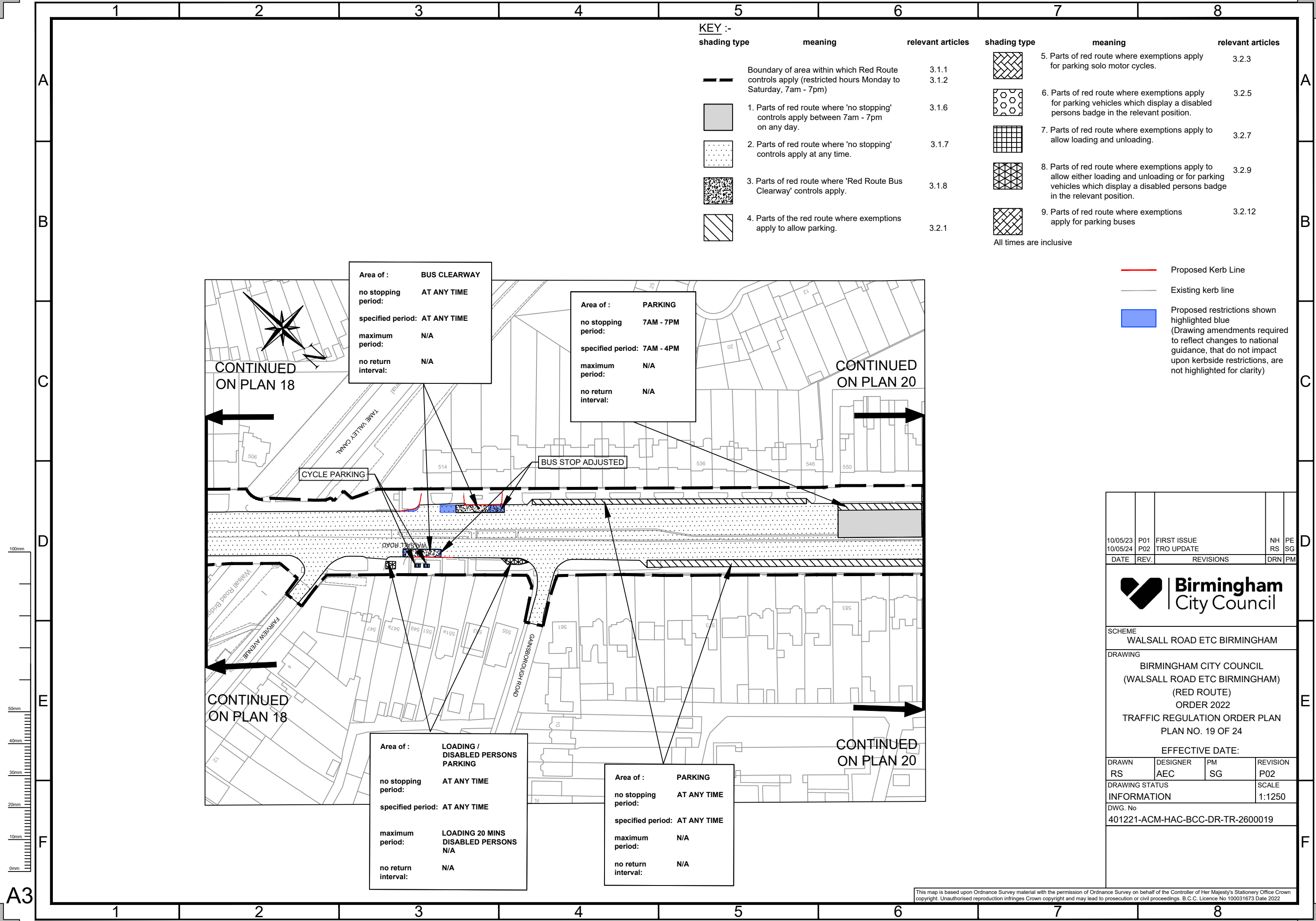
FIRST ISSUE
TRO UPDATE

NH
RS

PE
SG

DATE	REV.	REVISIONS	DRN	PM
SCHEME WALSALL ROAD ETC BIRMINGHAM				
DRAWING BIRMINGHAM CITY COUNCIL (WALSALL ROAD ETC BIRMINGHAM) (RED ROUTE) ORDER 2022 TRAFFIC REGULATION ORDER PLAN PLAN NO. 9 OF 24				
EFFECTIVE DATE:				
DRAWN JE	DESIGNER AEC	PM SG	REVISION P02	
DRAWING STATUS INFORMATION			SCALE 1:1250	
DWG. No 401221-ACM-HAC-BCC-DR-TR-2600009				

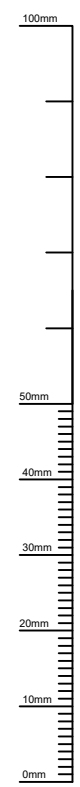
This map is based upon Ordnance Survey material with the permission of Ordnance Survey on behalf of the Controller of Her Majesty's Stationery Office Crown copyright. Unauthorised reproduction infringes Crown copyright and may lead to prosecution or civil proceedings. B.C.C. Licence No 100031673 Date 2022



KEY :-

shading type	meaning	relevant articles	shading type	meaning	relevant articles
	Boundary of area within which Red Route controls apply (restricted hours Monday to Saturday, 7am - 7pm)	3.1.1 3.1.2		5. Parts of red route where exemptions apply for parking solo motor cycles.	3.2.3
	1. Parts of red route where 'no stopping' controls apply between 7am - 7pm on any day.	3.1.6		6. Parts of red route where exemptions apply for parking vehicles which display a disabled persons badge in the relevant position.	3.2.5
	2. Parts of red route where 'no stopping' controls apply at any time.	3.1.7		7. Parts of red route where exemptions apply to allow loading and unloading.	3.2.7
	3. Parts of red route where 'Red Route Bus Clearway' controls apply.	3.1.8		8. Parts of red route where exemptions apply to allow either loading and unloading or for parking vehicles which display a disabled persons badge in the relevant position.	3.2.9
	4. Parts of the red route where exemptions apply to allow parking.	3.2.1		9. Parts of red route where exemptions apply for parking buses	3.2.12
All times are inclusive					

- Proposed Kerb Line
- Existing kerb line
- Proposed restrictions shown highlighted blue (Drawing amendments required to reflect changes to national guidance, that do not impact upon kerbside restrictions, are not highlighted for clarity)



10/05/23
10/05/24

P01
P02

FIRST ISSUE
TRO UPDATE

NH
RS

PE
SG

DATE	REV.	REVISIONS	DRN	PM

SCHEME
WALSALL ROAD ETC BIRMINGHAM

DRAWING
BIRMINGHAM CITY COUNCIL
(WALSALL ROAD ETC BIRMINGHAM)
(RED ROUTE)
ORDER 2022
TRAFFIC REGULATION ORDER PLAN
PLAN NO. 19 OF 24

EFFECTIVE DATE:

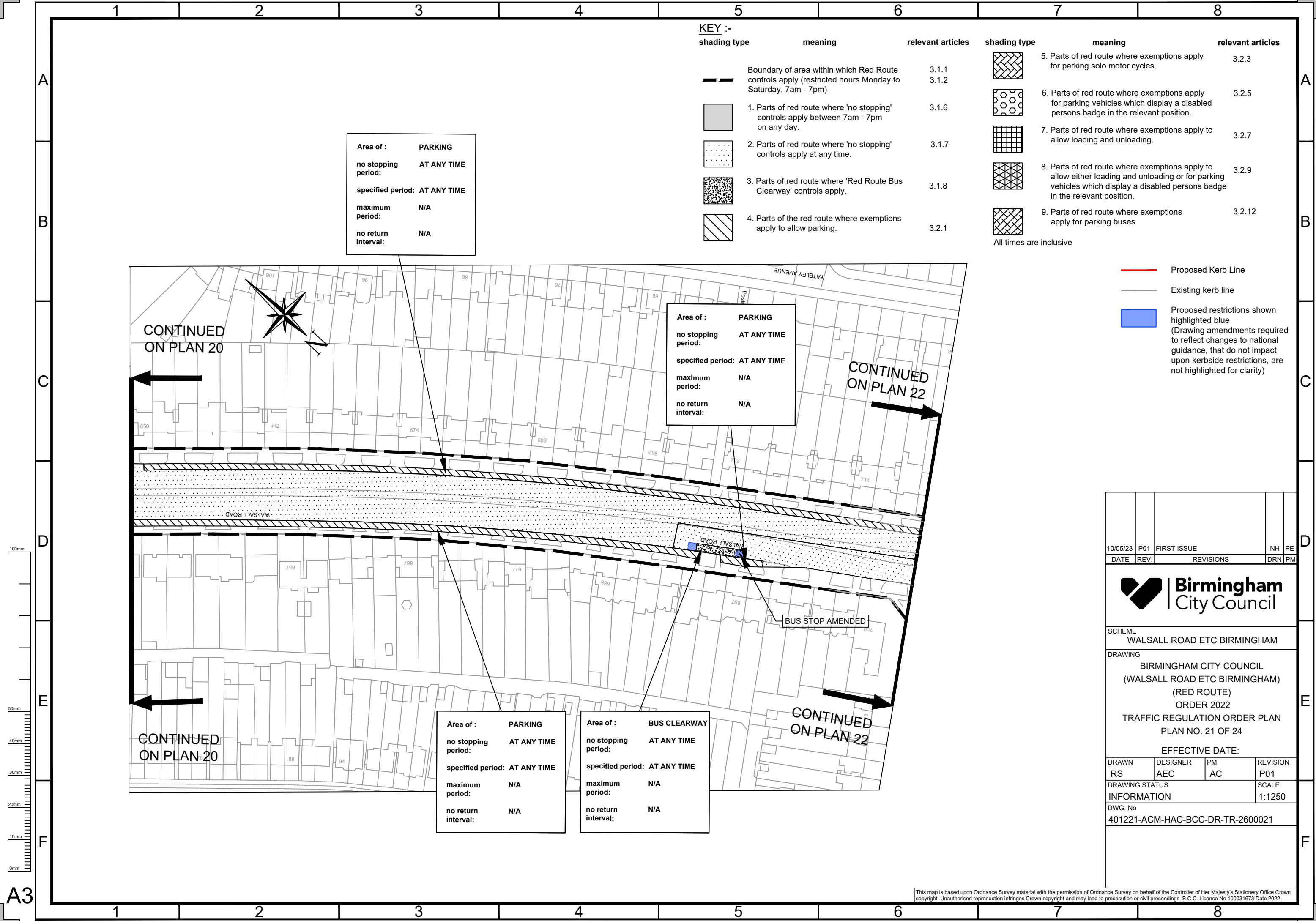
DRAWN RS	DESIGNER AEC	PM SG	REVISION P02
-------------	-----------------	----------	-----------------

DRAWING STATUS
INFORMATION

DWG. No
401221-ACM-HAC-BCC-DR-TR-2600019

SCALE
1:1250

This map is based upon Ordnance Survey material with the permission of Ordnance Survey on behalf of the Controller of Her Majesty's Stationery Office Crown copyright. Unauthorised reproduction infringes Crown copyright and may lead to prosecution or civil proceedings. B.C.C. Licence No 100031673 Date 2022



KEY :-

shading type	meaning	relevant articles	shading type	meaning	relevant articles
	Boundary of area within which Red Route controls apply (restricted hours Monday to Saturday, 7am - 7pm)	3.1.1 3.1.2		5. Parts of red route where exemptions apply for parking solo motor cycles.	3.2.3
	1. Parts of red route where 'no stopping' controls apply between 7am - 7pm on any day.	3.1.6		6. Parts of red route where exemptions apply for parking vehicles which display a disabled persons badge in the relevant position.	3.2.5
	2. Parts of red route where 'no stopping' controls apply at any time.	3.1.7		7. Parts of red route where exemptions apply to allow loading and unloading.	3.2.7
	3. Parts of red route where 'Red Route Bus Clearway' controls apply.	3.1.8		8. Parts of red route where exemptions apply to allow either loading and unloading or for parking vehicles which display a disabled persons badge in the relevant position.	3.2.9
	4. Parts of the red route where exemptions apply to allow parking.	3.2.1		9. Parts of red route where exemptions apply for parking buses	3.2.12
All times are inclusive					

Area of :	PARKING
no stopping period:	AT ANY TIME
specified period:	AT ANY TIME
maximum period:	N/A
no return interval:	N/A

Area of :	PARKING
no stopping period:	AT ANY TIME
specified period:	AT ANY TIME
maximum period:	N/A
no return interval:	N/A

Area of :	PARKING
no stopping period:	AT ANY TIME
specified period:	AT ANY TIME
maximum period:	N/A
no return interval:	N/A

Area of :	BUS CLEARWAY
no stopping period:	AT ANY TIME
specified period:	AT ANY TIME
maximum period:	N/A
no return interval:	N/A

- Proposed Kerb Line
- Existing kerb line
- Proposed restrictions shown highlighted blue (Drawing amendments required to reflect changes to national guidance, that do not impact upon kerbside restrictions, are not highlighted for clarity)

10/05/23

DATE

P01

REV.

FIRST ISSUE

REVISIONS

NH

DRN

PE

PM

SCHEME

WALSALL ROAD ETC BIRMINGHAM

DRAWING

BIRMINGHAM CITY COUNCIL
(WALSALL ROAD ETC BIRMINGHAM)
(RED ROUTE)
ORDER 2022
TRAFFIC REGULATION ORDER PLAN
PLAN NO. 21 OF 24

EFFECTIVE DATE:

DRAWN

RS

DESIGNER

AEC

PM

AC

REVISION

P01

DRAWING STATUS

INFORMATION

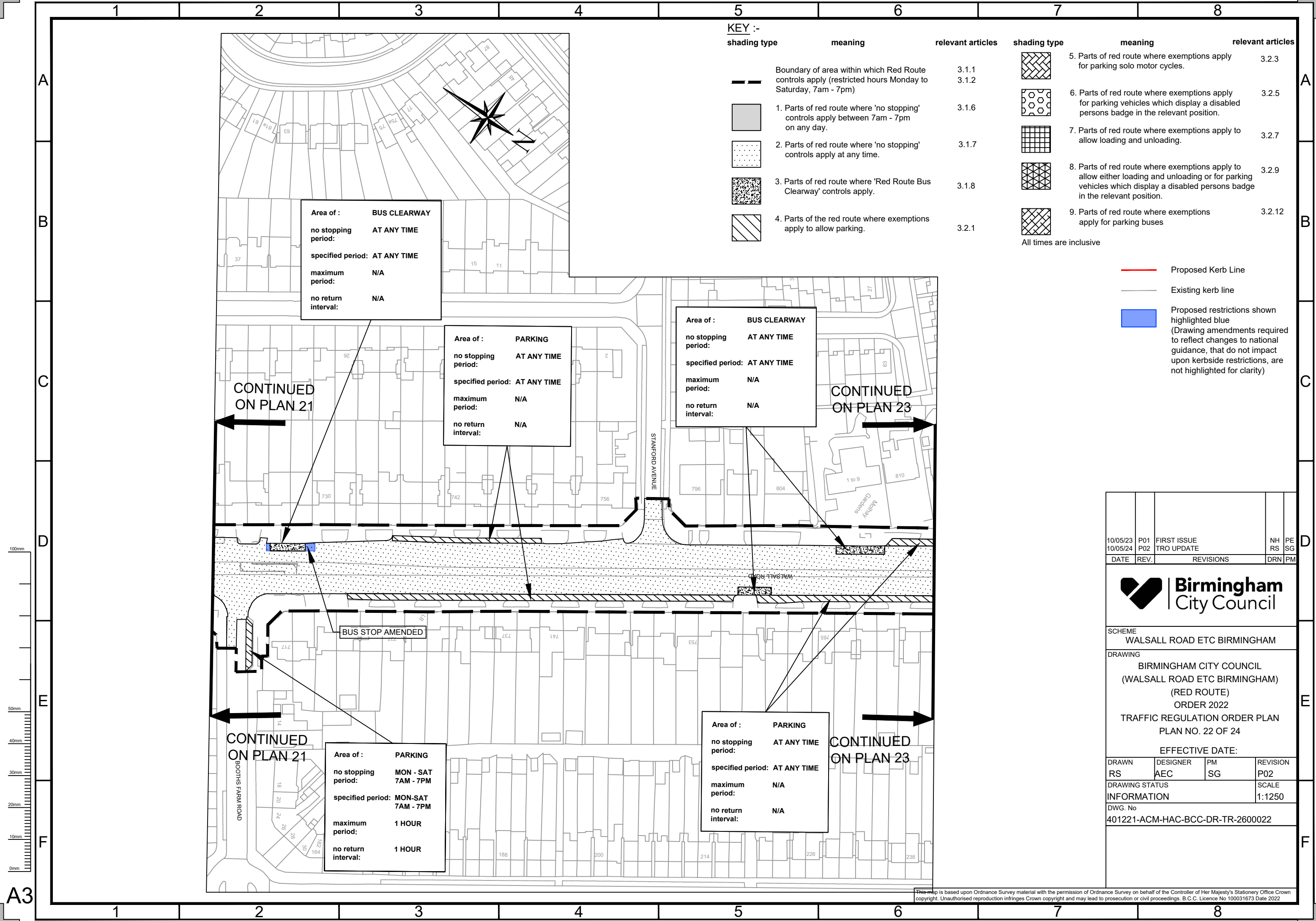
DWG. No

401221-ACM-HAC-BCC-DR-TR-2600021

SCALE

1:1250

This map is based upon Ordnance Survey material with the permission of Ordnance Survey on behalf of the Controller of Her Majesty's Stationery Office Crown copyright. Unauthorised reproduction infringes Crown copyright and may lead to prosecution or civil proceedings. B.C.C. Licence No 100031673 Date 2022

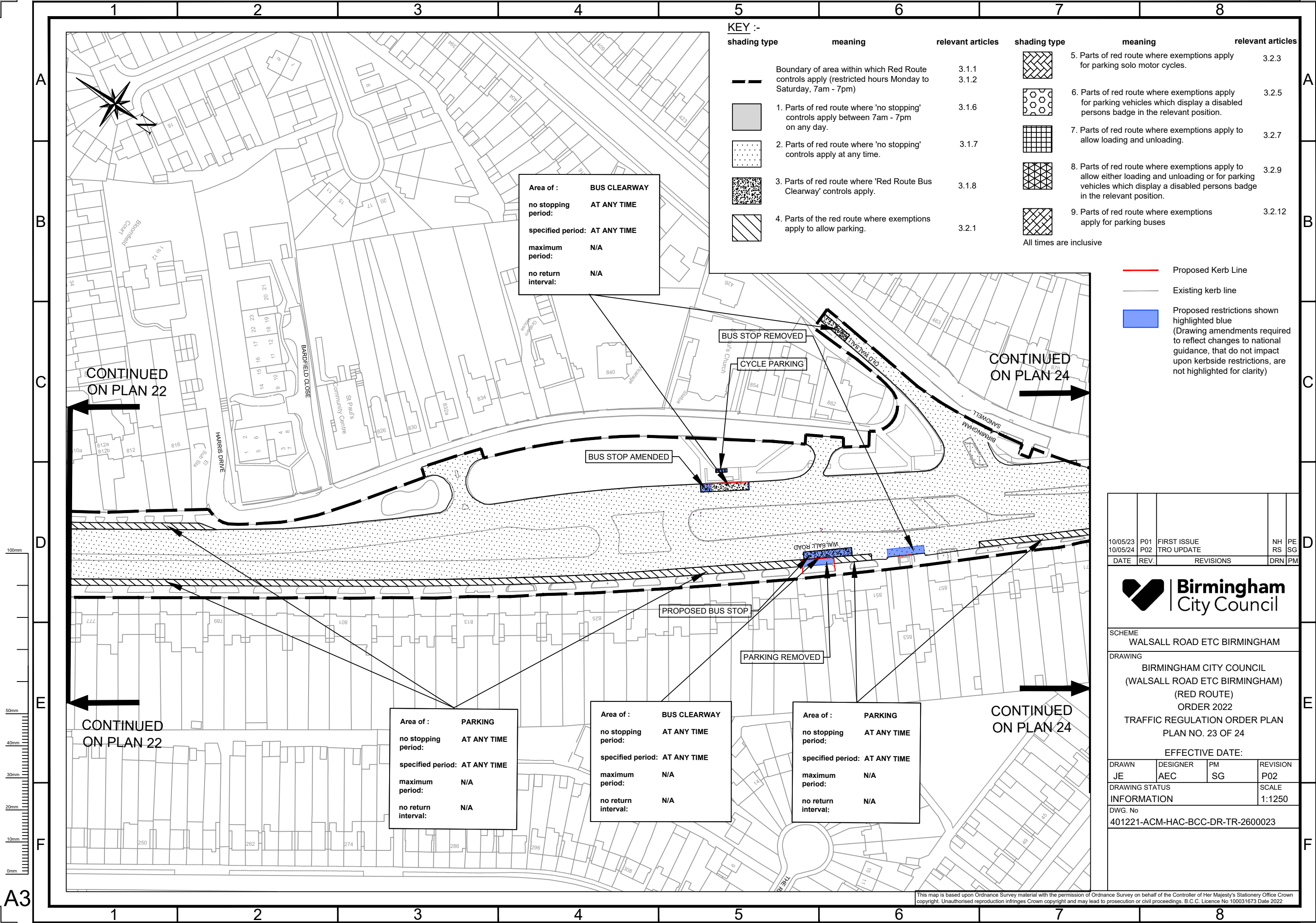


KEY :-					
shading type	meaning	relevant articles	shading type	meaning	relevant articles
	Boundary of area within which Red Route controls apply (restricted hours Monday to Saturday, 7am - 7pm)	3.1.1 3.1.2		5. Parts of red route where exemptions apply for parking solo motor cycles.	3.2.3
	1. Parts of red route where 'no stopping' controls apply between 7am - 7pm on any day.	3.1.6		6. Parts of red route where exemptions apply for parking vehicles which display a disabled persons badge in the relevant position.	3.2.5
	2. Parts of red route where 'no stopping' controls apply at any time.	3.1.7		7. Parts of red route where exemptions apply to allow loading and unloading.	3.2.7
	3. Parts of red route where 'Red Route Bus Clearway' controls apply.	3.1.8		8. Parts of red route where exemptions apply to allow either loading and unloading or for parking vehicles which display a disabled persons badge in the relevant position.	3.2.9
	4. Parts of the red route where exemptions apply to allow parking.	3.2.1		9. Parts of red route where exemptions apply for parking buses	3.2.12
			All times are inclusive		

- Proposed Kerb Line
- Existing kerb line
- Proposed restrictions shown highlighted blue (Drawing amendments required to reflect changes to national guidance, that do not impact upon kerbside restrictions, are not highlighted for clarity)

10/05/23	P01	FIRST ISSUE	NH	PE
10/05/24	P02	TRO UPDATE	RS	SG
DATE	REV.	REVISIONS	DRN	PM
<div><div></div><div><div>Birmingham</div><div>City Council</div></div></div>				
SCHEME				
WALSALL ROAD ETC BIRMINGHAM				
DRAWING				
BIRMINGHAM CITY COUNCIL				
(WALSALL ROAD ETC BIRMINGHAM)				
(RED ROUTE)				
ORDER 2022				
TRAFFIC REGULATION ORDER PLAN				
PLAN NO. 22 OF 24				
EFFECTIVE DATE:				
DRAWN	DESIGNER	PM	REVISION	
RS	AEC	SG	P02	
DRAWING STATUS			SCALE	
INFORMATION			1:1250	
DWG. No				
401221-ACM-HAC-BCC-DR-TR-2600022				

This map is based upon Ordnance Survey material with the permission of Ordnance Survey on behalf of the Controller of Her Majesty's Stationery Office Crown copyright. Unauthorised reproduction infringes Crown copyright and may lead to prosecution or civil proceedings. B.C.C. Licence No 100031673 Date 2022



KEY :-					
shading type	meaning	relevant articles	shading type	meaning	relevant articles
	Boundary of area within which Red Route controls apply (restricted hours Monday to Saturday, 7am - 7pm)	3.1.1 3.1.2		5. Parts of red route where exemptions apply for parking solo motor cycles.	3.2.3
	1. Parts of red route where 'no stopping' controls apply between 7am - 7pm on any day.	3.1.6		6. Parts of red route where exemptions apply for parking vehicles which display a disabled persons badge in the relevant position.	3.2.5
	2. Parts of red route where 'no stopping' controls apply at any time.	3.1.7		7. Parts of red route where exemptions apply to allow loading and unloading.	3.2.7
	3. Parts of red route where 'Red Route Bus Clearway' controls apply.	3.1.8		8. Parts of red route where exemptions apply to allow either loading and unloading or for parking vehicles which display a disabled persons badge in the relevant position.	3.2.9
	4. Parts of the red route where exemptions apply to allow parking.	3.2.1		9. Parts of red route where exemptions apply for parking buses	3.2.12
			All times are inclusive		

- Proposed Kerb Line
- Existing kerb line
- Proposed restrictions shown highlighted blue
(Drawing amendments required to reflect changes to national guidance, that do not impact upon kerbside restrictions, are not highlighted for clarity)

10/05/23	P01	FIRST ISSUE	NH	PE
10/05/24	P02	TRO UPDATE	RS	SG
DATE	REV.	REVISIONS	DRN	PM
<div><div></div><div><div>Birmingham</div><div>City Council</div></div></div>				
SCHEME				
WALSALL ROAD ETC BIRMINGHAM				
DRAWING				
BIRMINGHAM CITY COUNCIL				
(WALSALL ROAD ETC BIRMINGHAM)				
(RED ROUTE)				
ORDER 2022				
TRAFFIC REGULATION ORDER PLAN				
PLAN NO. 23 OF 24				
EFFECTIVE DATE:				
DRAWN	DESIGNER	PM	REVISION	
JE	AEC	SG	P02	
DRAWING STATUS			SCALE	
INFORMATION			1:1250	
DWG. No				
401221-ACM-HAC-BCC-DR-TR-2600023				