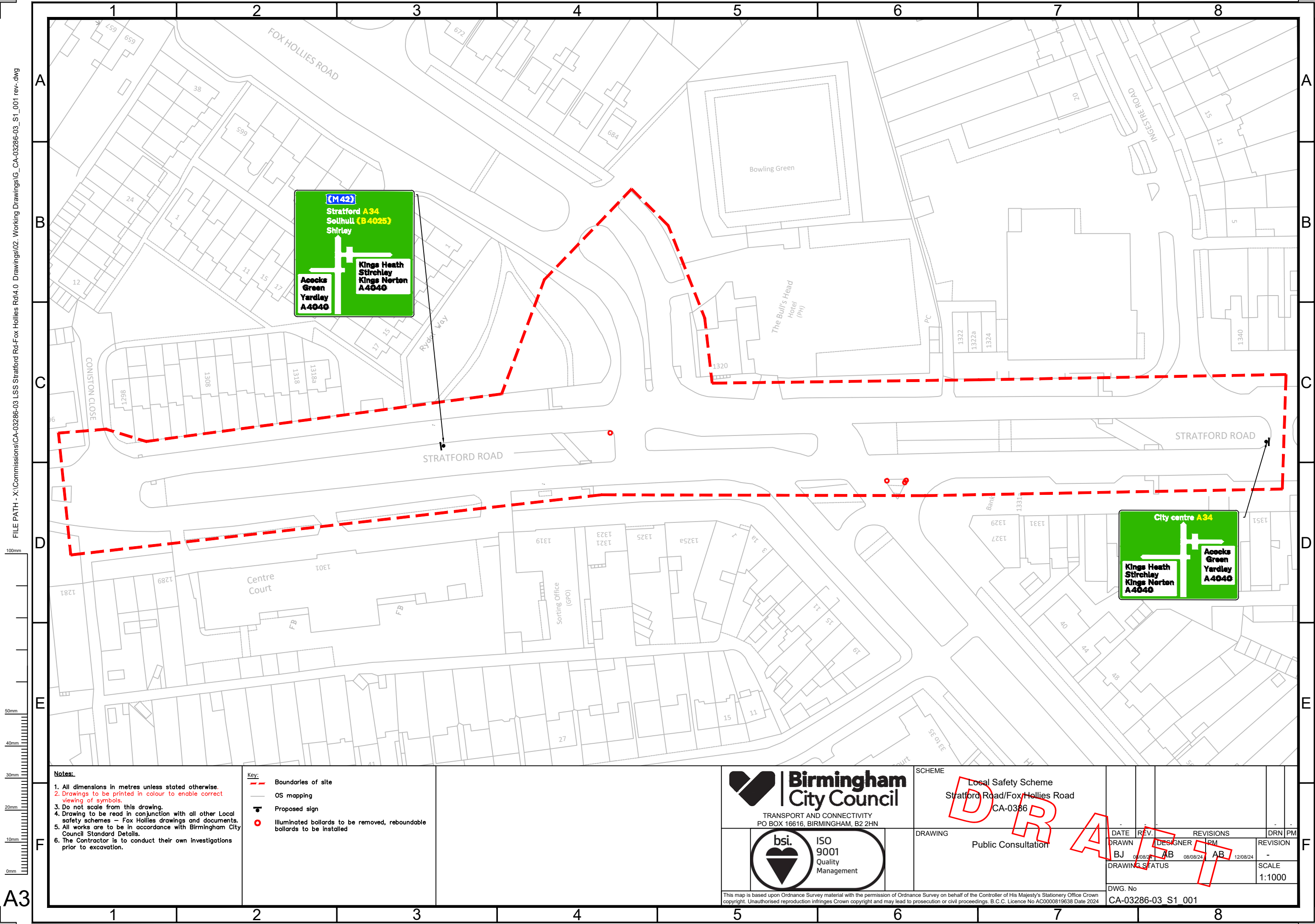


FILE PATH - X:\Commissions\CA-03286-03\_LSS Stratford Rd-Fox Hollies Rd\4.0 Drawings\02 Working Drawings\G\_CA-03286-03\_S1\_001 rev-.dwg



- Notes:**
1. All dimensions in metres unless stated otherwise.
  2. Drawings to be printed in colour to enable correct viewing of symbols.
  3. Do not scale from this drawing.
  4. Drawing to be read in conjunction with all other Local safety schemes – Fox Hollies drawings and documents.
  5. All works are to be in accordance with Birmingham City Council Standard Details.
  6. The Contractor is to conduct their own investigations prior to excavation.

- Key:**
- Boundaries of site
  - OS mapping
  - ⬮ Proposed sign
  - Illuminated bollards to be removed, reboundable bollards to be installed

**Birmingham City Council**

TRANSPORT AND CONNECTIVITY  
PO BOX 16616, BIRMINGHAM, B2 2HN



SCHEME  
Local Safety Scheme  
Stratford Road/Fox Hollies Road  
CA-0386

DRAWING  
Public Consultation

DATE	REV.	DESIGNER	PM	REVISIONS	DRN	PM
08/08/24	1	AB	AB	12/08/24	-	-

DRAWING STATUS  
SCALE  
1:1000

DWG. No  
CA-03286-03 S1\_001

This map is based upon Ordnance Survey material with the permission of Ordnance Survey on behalf of the Controller of His Majesty's Stationery Office Crown copyright. Unauthorised reproduction infringes Crown copyright and may lead to prosecution or civil proceedings. B.C.C. Licence No AC0000819638 Date 2024