

Consultation on the
City Centre Public Realm Scheme

CITY CENTRE PUBLIC REALM IMPROVEMENTS



Have your say:

Consultation closes on **21 February 2020**



Birmingham
City Council

Working in partnership with



Our vision

We want to transform the public realm in the city centre and create an attractive, welcoming and safe environment to attract more visitors to Birmingham city centre which will facilitate economic growth.

High-quality public spaces will be created to enhance the city's environment and connectivity. At peak times access and loading will be restricted within the city centre to make it easier, more welcoming and safer for pedestrians and more accessible to those with mobility issues.

The works programme will also include permanent and less intrusive hostile vehicle security measures (HVM) as part of a comprehensive safety and

security strategy for the city centre.

Birmingham will be at the centre of the world stage during the 2022 Commonwealth Games and the city centre will act as a gateway for many visitors visiting the city for the first time.

These improvements will create a lasting legacy by providing a safe, attractive and welcoming pedestrianised environment for all users to enjoy.

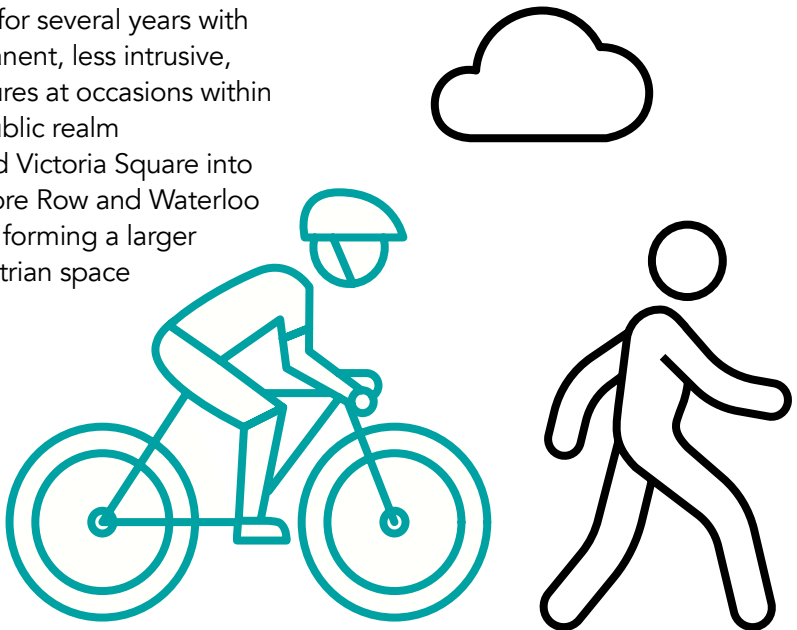


Proposed view of Victoria Square looking towards Waterloo Street

Public realm improvements

The scheme will:

- Enhance the public realm using new high-quality paving materials throughout the scheme area, whilst reinstating heritage paving in sections of Victoria Square
- Create a kerb free pedestrian route for passengers travelling from New Street Station to the retail and business centre
- Widen footways, where possible, to provide easier connectivity for pedestrians
- Replace the temporary HVM measures that have been in place for several years with permanent, less intrusive, measures at occasions within the public realm
- Extend Victoria Square into Colmore Row and Waterloo Street forming a larger pedestrian space
- Remove one tree from Waterloo Street that is in decline and replace with one new tree in a nearby location
- Improve and enhance the street lighting, making the area feel safer for all
- Improve wayfinding for all
- Upgrade the street furniture by replacing the existing with high-quality street furniture
- Repair and restore The River fountain in Victoria Square



Vehicle access restrictions



Proposed view of Temple Street looking north towards Cathedral Square

We are proposing to extend the existing pedestrian zone and loading restrictions to standardise operation times to 7am to 7pm seven days a week to ensure a safe and secure environment for pedestrians during times of busy footfall.

This will provide greater priority for pedestrians and make the area feel safer, more welcoming and help to minimise the interaction between pedestrians and vehicles. Reallocating space to pedestrians will require changes to the current taxi and disabled bays.

Improved loading facilities will be provided for local businesses outside of the restriction hours to offset the daytime restrictions. Vehicular access will be maintained to off-street, private accesses at all times through manual operation of the HVM bollards.



Proposed view of New Street looking west towards Corporation Street



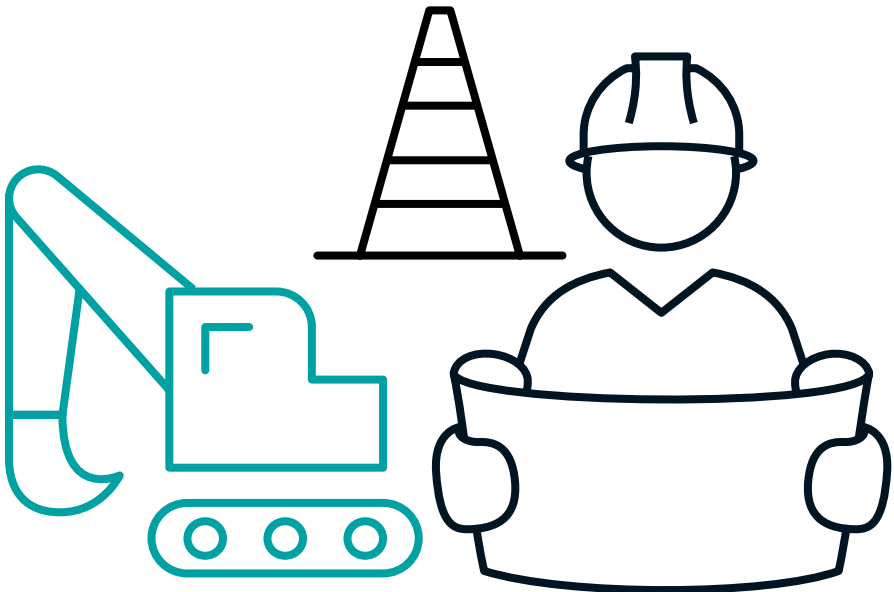
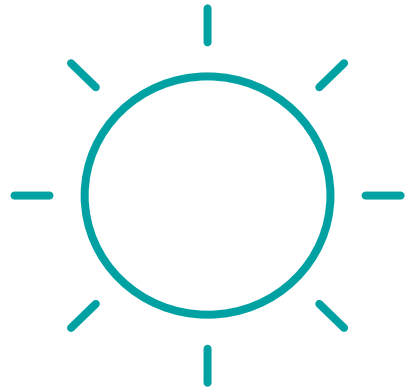
Proposed view of New Street looking west towards Victoria Square

Construction

Construction is expected to begin in 2020.

We will do all that we can to minimise the disruption, including:

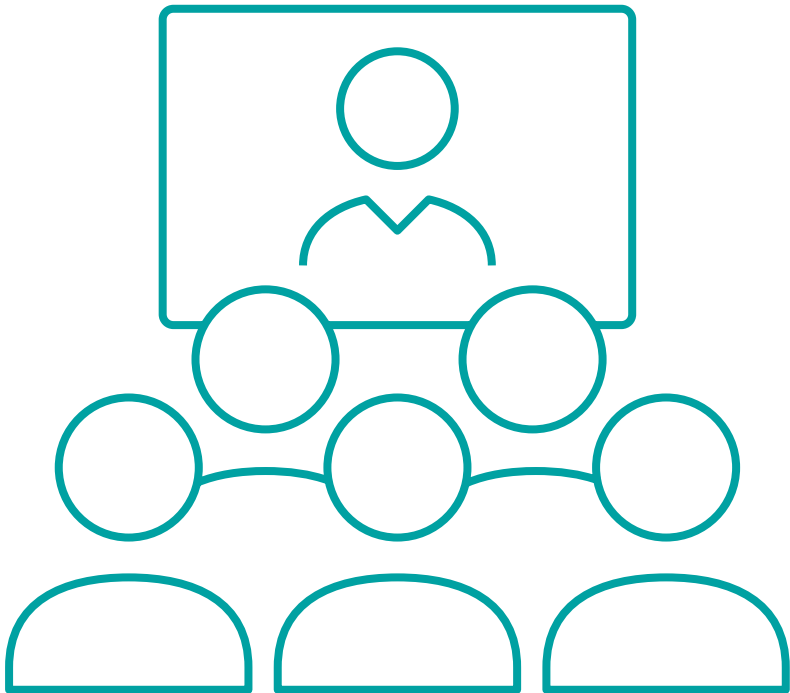
- Adopting a phased approach to the construction works
- Co-ordinating with other local works
- Business access will remain throughout the duration of the works, during business hours. Where the works might require short term unavoidable interruptions to access, we will carry out such works outside of normal trading hours.



Events

We will be holding two drop-in events, where you can see the plans for yourself and talk to the project team.

Venue	Location	Date	Time
Head of Steam	Somerset House, 36 Temple Street, Birmingham	Wednesday 5 February 2020	12pm-3pm
Council House	Victoria Square, Birmingham B1 1BB	Wednesday 12 February 2020	3:30pm-6:30pm



Have your say

We want to know what you think about our plans for the changes to the city centre public realm. We are consulting on the proposed changes to the access, loading/ unloading, hostile vehicle security measures and public realm.

You can view full details of the consultation, detailed plans of the proposed scheme and respond to an online questionnaire at **www.birminghambeheard.org.uk/economy/citycentrepUBLICREALM**

The simplest way to respond to this consultation is via the website, but if you are unable to access the internet, you can view printed plans and pick up a paper questionnaire at:

Library	Location	Opening times
Library of Birmingham	Centenary Square, B1 2ND	Mon and Tue: 11am to 7pm Wed to Sat: 11am to 5pm

If you require more information, have any questions or would like paper copies of the plans and questionnaire posted to you, please contact us at **transportprojects@birmingham.gov.uk** or on **0121 303 7532**.

Consultation closes on 21 February 2020.

