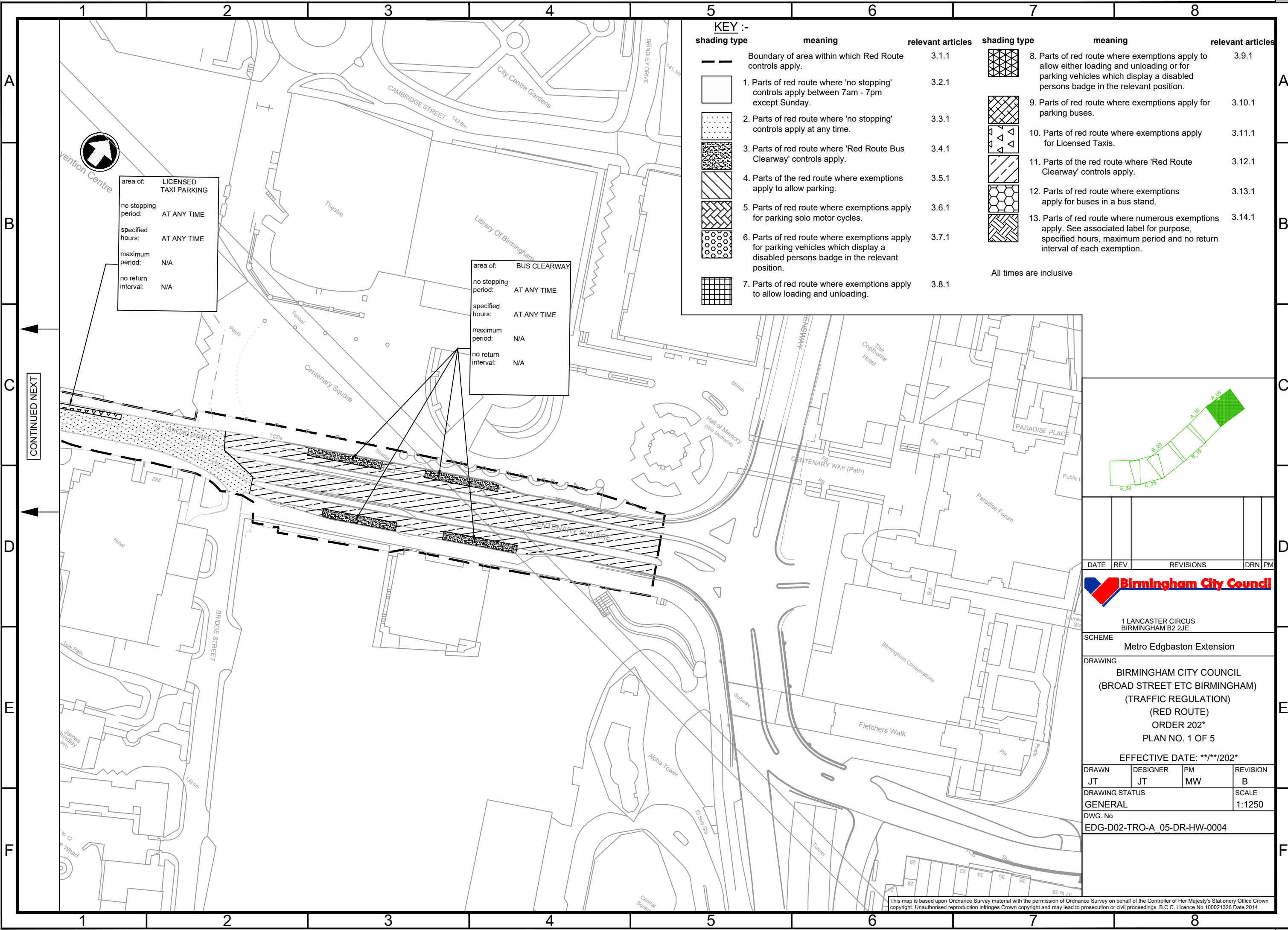


C:\pwworkdir\mna-pw\nat.willis\dms0926\EDG-D02-TRO-A_05-DR-HW-0004.dwg



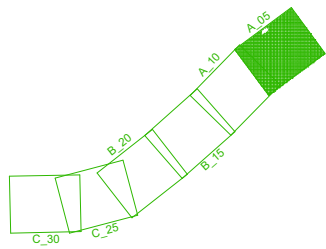
A3



area of: LICENSED TAXI PARKING
no stopping period: AT ANY TIME
specified hours: AT ANY TIME
maximum period: N/A
no return interval: N/A

area of: BUS CLEARWAY
no stopping period: AT ANY TIME
specified hours: AT ANY TIME
maximum period: N/A
no return interval: N/A

KEY :-					
shading type	meaning	relevant articles	shading type	meaning	relevant articles
	Boundary of area within which Red Route controls apply.	3.1.1		8. Parts of red route where exemptions apply to allow either loading and unloading or for parking vehicles which display a disabled persons badge in the relevant position.	3.9.1
	1. Parts of red route where 'no stopping' controls apply between 7am - 7pm except Sunday.	3.2.1		9. Parts of red route where exemptions apply for parking buses.	3.10.1
	2. Parts of red route where 'no stopping' controls apply at any time.	3.3.1		10. Parts of red route where exemptions apply for Licensed Taxis.	3.11.1
	3. Parts of red route where 'Red Route Bus Clearway' controls apply.	3.4.1		11. Parts of the red route where 'Red Route Clearway' controls apply.	3.12.1
	4. Parts of the red route where exemptions apply to allow parking.	3.5.1		12. Parts of red route where exemptions apply for buses in a bus stand.	3.13.1
	5. Parts of red route where exemptions apply for parking solo motor cycles.	3.6.1		13. Parts of red route where numerous exemptions apply. See associated label for purpose, specified hours, maximum period and no return interval of each exemption.	3.14.1
	6. Parts of red route where exemptions apply for parking vehicles which display a disabled persons badge in the relevant position.	3.7.1	All times are inclusive		
	7. Parts of red route where exemptions apply to allow loading and unloading.	3.8.1			



DATE	REV.	REVISIONS	DRN	PM
------	------	-----------	-----	----



1 LANCASTER CIRCUS
BIRMINGHAM B2 2JE

SCHEME Metro Edgbaston Extension

DRAWING
BIRMINGHAM CITY COUNCIL
(BROAD STREET ETC BIRMINGHAM)
(TRAFFIC REGULATION)
(RED ROUTE)
ORDER 202*
PLAN NO. 1 OF 5
EFFECTIVE DATE: **/**/202*

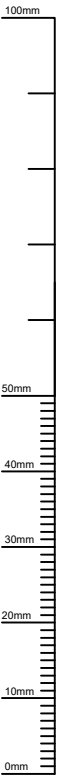
DRAWN	DESIGNER	PM	REVISION
JT	JT	MW	B

DRAWING STATUS
GENERAL
SCALE
1:1250

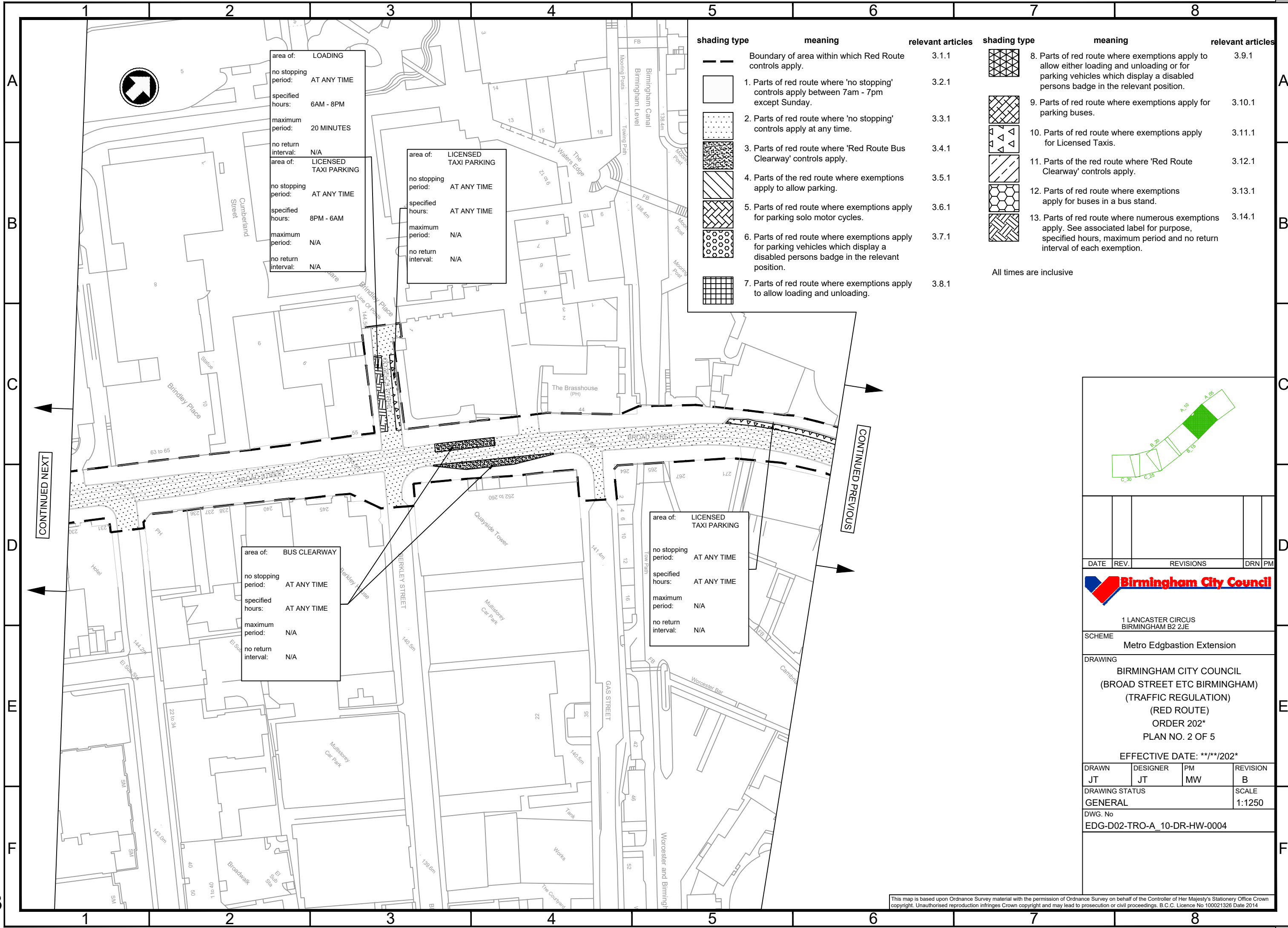
DWG. No
EDG-D02-TRO-A_05-DR-HW-0004

This map is based upon Ordnance Survey material with the permission of Ordnance Survey on behalf of the Controller of Her Majesty's Stationery Office Crown copyright. Unauthorised reproduction infringes Crown copyright and may lead to prosecution or civil proceedings. B.C.C. Licence No 100021326 Date 2014.

C:\pwworkdir\mna-pw\mat.willis\dms50926\EDG-D02-TRO-A_10-DR-HW-0004.dwg



A3



shading type	meaning	relevant articles	shading type	meaning	relevant articles
	Boundary of area within which Red Route controls apply.	3.1.1		8. Parts of red route where exemptions apply to allow either loading and unloading or for parking vehicles which display a disabled persons badge in the relevant position.	3.9.1
	1. Parts of red route where 'no stopping' controls apply between 7am - 7pm except Sunday.	3.2.1		9. Parts of red route where exemptions apply for parking buses.	3.10.1
	2. Parts of red route where 'no stopping' controls apply at any time.	3.3.1		10. Parts of red route where exemptions apply for Licensed Taxis.	3.11.1
	3. Parts of red route where 'Red Route Bus Clearway' controls apply.	3.4.1		11. Parts of the red route where 'Red Route Clearway' controls apply.	3.12.1
	4. Parts of the red route where exemptions apply to allow parking.	3.5.1		12. Parts of red route where exemptions apply for buses in a bus stand.	3.13.1
	5. Parts of red route where exemptions apply for parking solo motor cycles.	3.6.1		13. Parts of red route where numerous exemptions apply. See associated label for purpose, specified hours, maximum period and no return interval of each exemption.	3.14.1
	6. Parts of red route where exemptions apply for parking vehicles which display a disabled persons badge in the relevant position.	3.7.1			
	7. Parts of red route where exemptions apply to allow loading and unloading.	3.8.1			

All times are inclusive

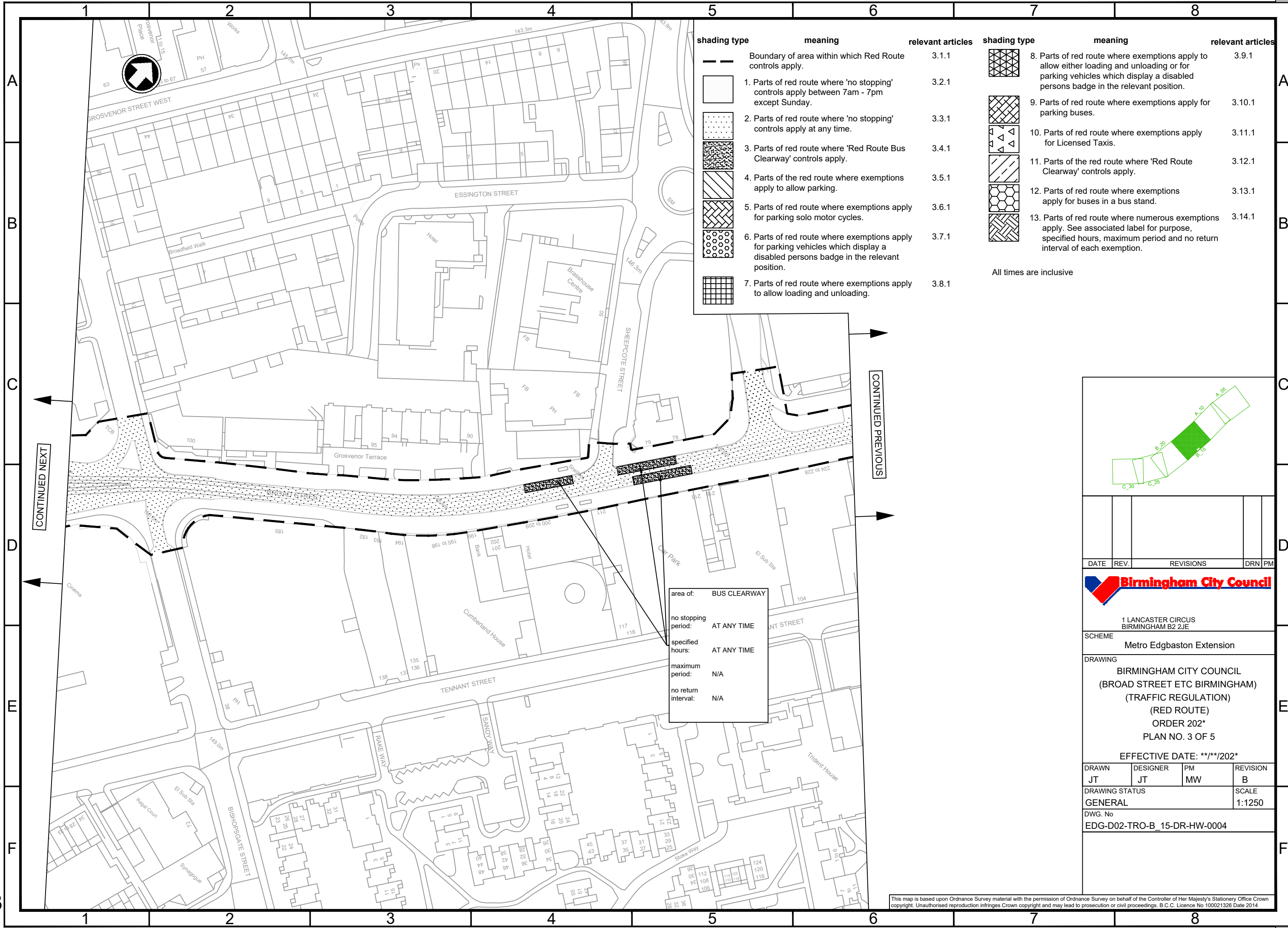
DATE	REV.	REVISIONS	DRN	PM
1 LANCASTER CIRCUS BIRMINGHAM B2 2JE				
SCHEME Metro Edgbaston Extension				
DRAWING BIRMINGHAM CITY COUNCIL (BROAD STREET ETC BIRMINGHAM) (TRAFFIC REGULATION) (RED ROUTE) ORDER 202* PLAN NO. 2 OF 5 EFFECTIVE DATE: **/**/202*				
DRAWN JT	DESIGNER JT	PM MW	REVISION B	
DRAWING STATUS GENERAL			SCALE 1:1250	
DWG. No EDG-D02-TRO-A_10-DR-HW-0004				

This map is based upon Ordnance Survey material with the permission of Ordnance Survey on behalf of the Controller of Her Majesty's Stationery Office Crown copyright. Unauthorised reproduction infringes Crown copyright and may lead to prosecution or civil proceedings. B.C.C. Licence No 100021326 Date 2014.

C:\pwworkdir\mna-pw\nat.willis\dms0926\EDG-D02-TRO-B_15-DR-HW-0004.dwg



A3



shading type	meaning	relevant articles	shading type	meaning	relevant articles
	Boundary of area within which Red Route controls apply.	3.1.1		8. Parts of red route where exemptions apply to allow either loading and unloading or for parking vehicles which display a disabled persons badge in the relevant position.	3.9.1
	1. Parts of red route where 'no stopping' controls apply between 7am - 7pm except Sunday.	3.2.1		9. Parts of red route where exemptions apply for parking buses.	3.10.1
	2. Parts of red route where 'no stopping' controls apply at any time.	3.3.1		10. Parts of red route where exemptions apply for Licensed Taxis.	3.11.1
	3. Parts of red route where 'Red Route Bus Clearway' controls apply.	3.4.1		11. Parts of the red route where 'Red Route Clearway' controls apply.	3.12.1
	4. Parts of the red route where exemptions apply to allow parking.	3.5.1		12. Parts of red route where exemptions apply for buses in a bus stand.	3.13.1
	5. Parts of red route where exemptions apply for parking solo motor cycles.	3.6.1		13. Parts of red route where numerous exemptions apply. See associated label for purpose, specified hours, maximum period and no return interval of each exemption.	3.14.1
	6. Parts of red route where exemptions apply for parking vehicles which display a disabled persons badge in the relevant position.	3.7.1			
	7. Parts of red route where exemptions apply to allow loading and unloading.	3.8.1			

All times are inclusive

area of: BUS CLEARWAY
no stopping period: AT ANY TIME
specified hours: AT ANY TIME
maximum period: N/A
no return interval: N/A

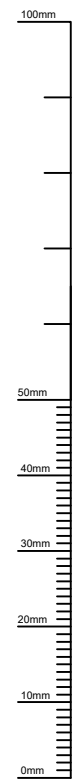
CONTINUED PREVIOUS

CONTINUED NEXT

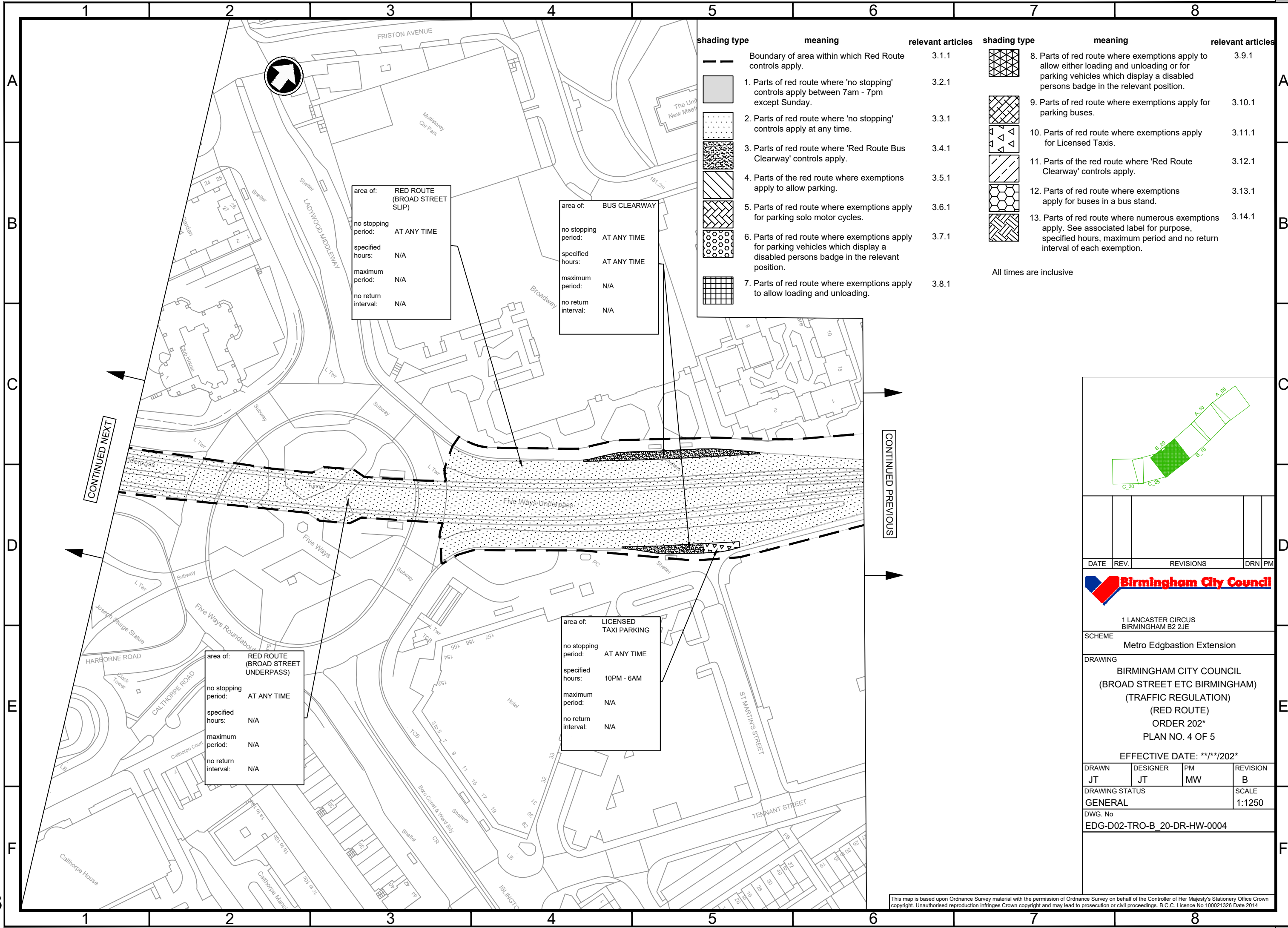
DATE	REV.	REVISIONS	DRN	PM
1 LANCASTER CIRCUS BIRMINGHAM B2 2JE				
SCHEME Metro Edgbaston Extension				
DRAWING BIRMINGHAM CITY COUNCIL (BROAD STREET ETC BIRMINGHAM) (TRAFFIC REGULATION) (RED ROUTE) ORDER 202* PLAN NO. 3 OF 5 EFFECTIVE DATE: **/**/202*				
DRAWN JT	DESIGNER JT	PM MW	REVISION B	
DRAWING STATUS GENERAL			SCALE 1:1250	
DWG. No EDG-D02-TRO-B_15-DR-HW-0004				

This map is based upon Ordnance Survey material with the permission of Ordnance Survey on behalf of the Controller of Her Majesty's Stationery Office Crown copyright. Unauthorised reproduction infringes Crown copyright and may lead to prosecution or civil proceedings. B.C.C. Licence No 100021326 Date 2014.

C:\pwworkdir\mma-pw\reza.nezhad\dms50926\EDG-D02-TRO-B_20-DR-HW-0004.dwg



A3



shading type	meaning	relevant articles	shading type	meaning	relevant articles
	Boundary of area within which Red Route controls apply.	3.1.1		8. Parts of red route where exemptions apply to allow either loading and unloading or for parking vehicles which display a disabled persons badge in the relevant position.	3.9.1
	1. Parts of red route where 'no stopping' controls apply between 7am - 7pm except Sunday.	3.2.1		9. Parts of red route where exemptions apply for parking buses.	3.10.1
	2. Parts of red route where 'no stopping' controls apply at any time.	3.3.1		10. Parts of red route where exemptions apply for Licensed Taxis.	3.11.1
	3. Parts of red route where 'Red Route Bus Clearway' controls apply.	3.4.1		11. Parts of the red route where 'Red Route Clearway' controls apply.	3.12.1
	4. Parts of the red route where exemptions apply to allow parking.	3.5.1		12. Parts of red route where exemptions apply for buses in a bus stand.	3.13.1
	5. Parts of red route where exemptions apply for parking solo motor cycles.	3.6.1		13. Parts of red route where numerous exemptions apply. See associated label for purpose, specified hours, maximum period and no return interval of each exemption.	3.14.1
	6. Parts of red route where exemptions apply for parking vehicles which display a disabled persons badge in the relevant position.	3.7.1			
	7. Parts of red route where exemptions apply to allow loading and unloading.	3.8.1			

All times are inclusive

DATE	REV.	REVISIONS	DRN	PM
1 LANCASTER CIRCUS BIRMINGHAM B2 2JE				
SCHEME Metro Edgbaston Extension				
DRAWING BIRMINGHAM CITY COUNCIL (BROAD STREET ETC BIRMINGHAM) (TRAFFIC REGULATION) (RED ROUTE) ORDER 202* PLAN NO. 4 OF 5 EFFECTIVE DATE: **/**/202*				
DRAWN JT	DESIGNER JT	PM MW	REVISION B	
DRAWING STATUS GENERAL			SCALE 1:1250	
DWG. No EDG-D02-TRO-B_20-DR-HW-0004				

This map is based upon Ordnance Survey material with the permission of Ordnance Survey on behalf of the Controller of Her Majesty's Stationery Office Crown copyright. Unauthorised reproduction infringes Crown copyright and may lead to prosecution or civil proceedings. B.C.C. Licence No 100021326 Date 2014.

A

B

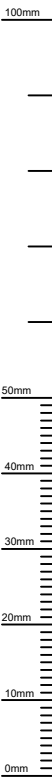
C

D

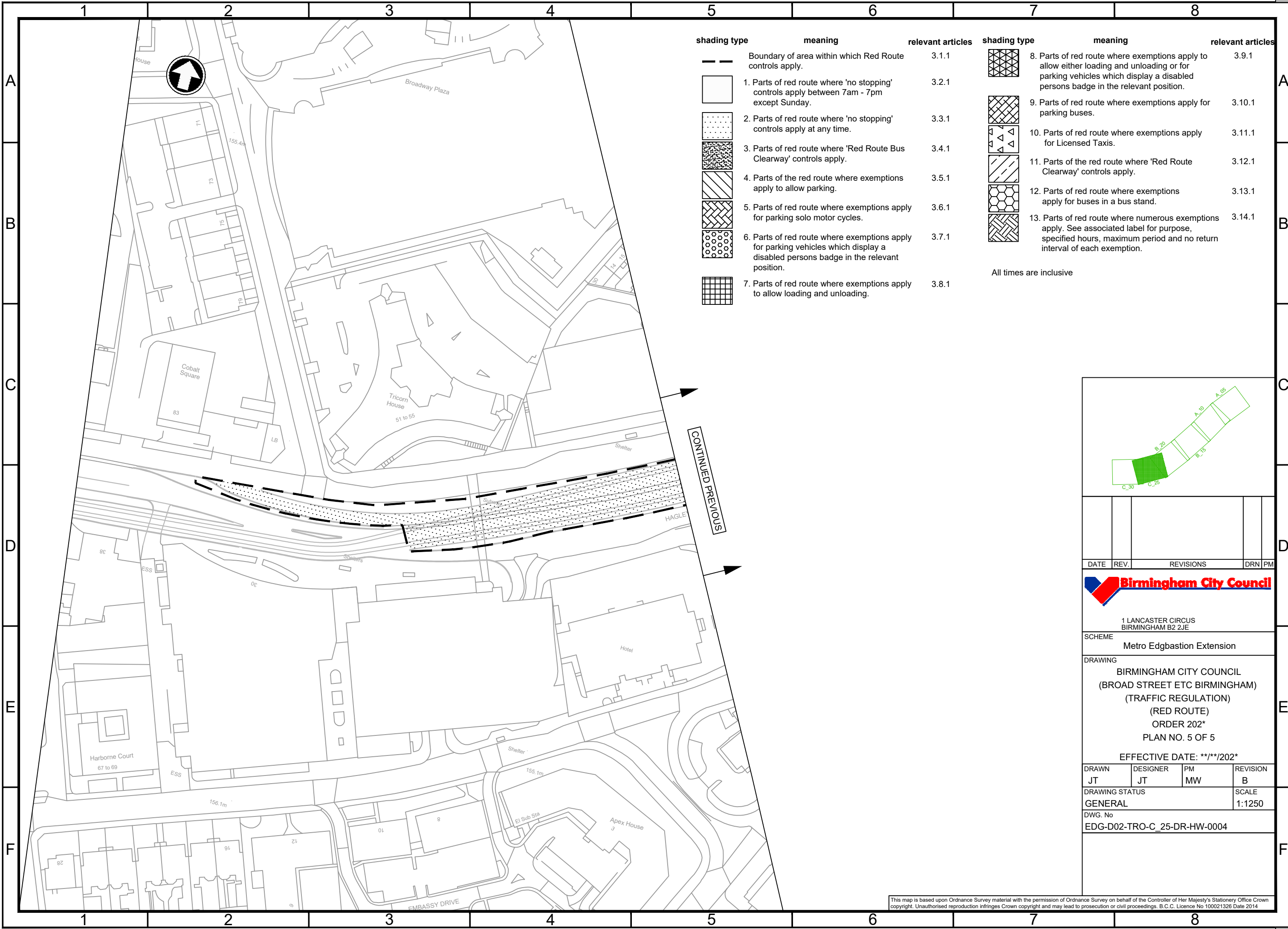
E

F

C:\pwworkdir\mna-pw\nat.willis\dms0926\EDG-D02-TRO-C_25-DR-HW-0004_3.dwg



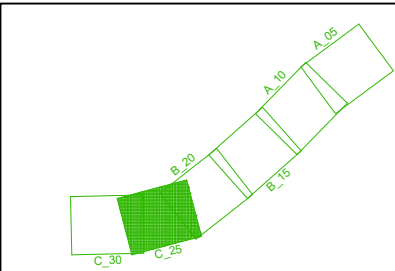
A3



shading type	meaning	relevant articles	shading type	meaning	relevant articles
	Boundary of area within which Red Route controls apply.	3.1.1		8. Parts of red route where exemptions apply to allow either loading and unloading or for parking vehicles which display a disabled persons badge in the relevant position.	3.9.1
	1. Parts of red route where 'no stopping' controls apply between 7am - 7pm except Sunday.	3.2.1		9. Parts of red route where exemptions apply for parking buses.	3.10.1
	2. Parts of red route where 'no stopping' controls apply at any time.	3.3.1		10. Parts of red route where exemptions apply for Licensed Taxis.	3.11.1
	3. Parts of red route where 'Red Route Bus Clearway' controls apply.	3.4.1		11. Parts of the red route where 'Red Route Clearway' controls apply.	3.12.1
	4. Parts of the red route where exemptions apply to allow parking.	3.5.1		12. Parts of red route where exemptions apply for buses in a bus stand.	3.13.1
	5. Parts of red route where exemptions apply for parking solo motor cycles.	3.6.1		13. Parts of red route where numerous exemptions apply. See associated label for purpose, specified hours, maximum period and no return interval of each exemption.	3.14.1
	6. Parts of red route where exemptions apply for parking vehicles which display a disabled persons badge in the relevant position.	3.7.1			
	7. Parts of red route where exemptions apply to allow loading and unloading.	3.8.1			

All times are inclusive

CONTINUED PREVIOUS



DATE	REV.	REVISIONS	DRN	PM
------	------	-----------	-----	----



1 LANCASTER CIRCUS
BIRMINGHAM B2 2JE

SCHEME
Metro Edgbaston Extension

DRAWING
BIRMINGHAM CITY COUNCIL
(BROAD STREET ETC BIRMINGHAM)
(TRAFFIC REGULATION)
(RED ROUTE)
ORDER 202*
PLAN NO. 5 OF 5

EFFECTIVE DATE: **/**/202*

DRAWN	DESIGNER	PM	REVISION
JT	JT	MW	B

DRAWING STATUS	SCALE
GENERAL	1:1250

DWG. No
EDG-D02-TRO-C_25-DR-HW-0004

This map is based upon Ordnance Survey material with the permission of Ordnance Survey on behalf of the Controller of Her Majesty's Stationery Office Crown copyright. Unauthorised reproduction infringes Crown copyright and may lead to prosecution or civil proceedings. B.C.C. Licence No 100021326 Date 2014.