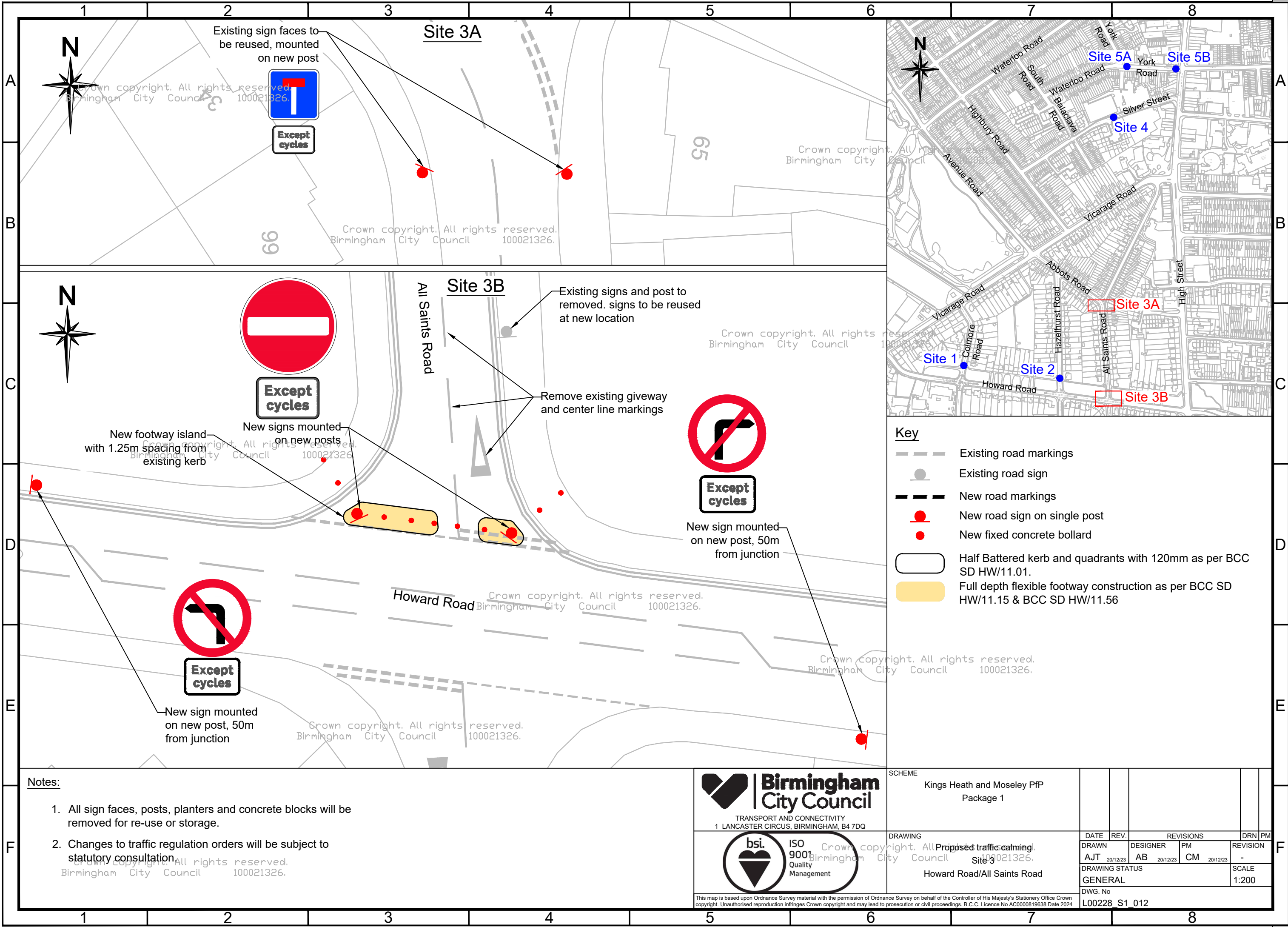


FILE PATH - X:\Commissions\L00228 Kings Heath and Moseley Places for People\4.0 Drawings\01. Package 1\03. Approved Drawings\L00228_S1_012.dwg

A3



Key

- Existing road markings
- Existing road sign
- New road markings
- New road sign on single post
- New fixed concrete bollard
- Half Battered kerb and quadrants with 120mm as per BCC SD HW/11.01.
- Full depth flexible footway construction as per BCC SD HW/11.15 & BCC SD HW/11.56

Notes:

- All sign faces, posts, planters and concrete blocks will be removed for re-use or storage.
- Changes to traffic regulation orders will be subject to statutory consultation.



TRANSPORT AND CONNECTIVITY
1 LANCASTER CIRCUS, BIRMINGHAM, B4 7DQ



This map is based upon Ordnance Survey material with the permission of Ordnance Survey on behalf of the Controller of His Majesty's Stationery Office Crown copyright. Unauthorised reproduction infringes Crown copyright and may lead to prosecution or civil proceedings. B.C.C. Licence No AC0000819638 Date 2024

SCHEME		Kings Heath and Moseley PTP Package 1					
DRAWING		DATE		REV.		REVISIONS	
Proposed traffic calming Site 3		20/12/23		AB		CM	
Howard Road/All Saints Road		DRAWN		DESIGNER		PM	
		AJT		AB		CM	
		DRAWING STATUS				REVISION	
		GENERAL				-	
		DWG. No				SCALE	
		L00228 S1_012				1:200	