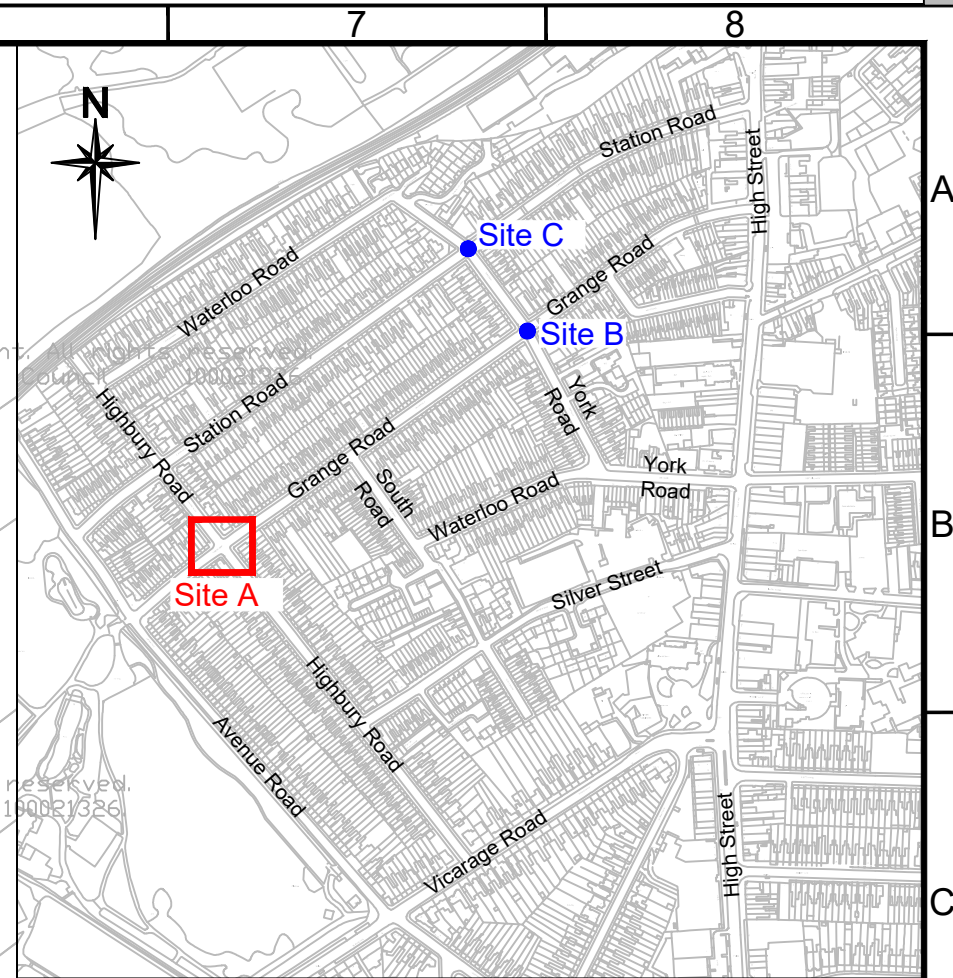
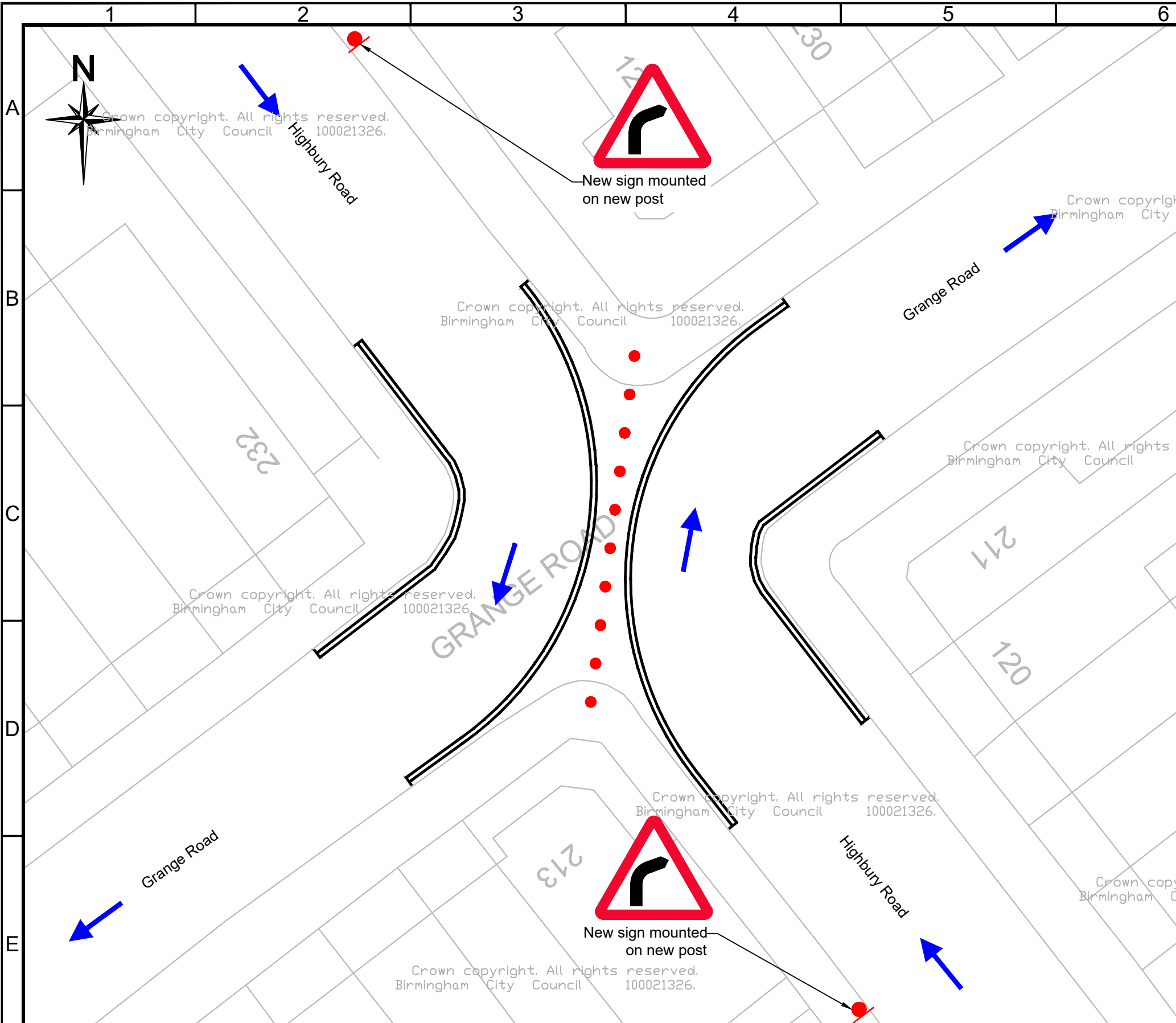


FILE PATH - X:\Commissions\L00228 Kings Heath and Moseley Places for People\4.0 Drawings\01. Package 1\03. Approved Drawings\L00228\_S1\_015-01 -dwg



**Key**

- Existing road markings
- New road markings
- New road sign on single post
- New fixed concrete bollard
- Proposed one way movement direction

**Notes:**

- All sign faces, posts, planters and concrete blocks will be removed for re-use or storage.
- Changes to traffic regulation orders will be subject to statutory consultation.

Crown copyright. All rights reserved. Birmingham City Council 100021326.

**Birmingham City Council**  
 TRANSPORT AND CONNECTIVITY  
 1 LANCASTER CIRCUS, BIRMINGHAM, B4 7DQ

**bsi.** ISO 9001 Quality Management

Proposed traffic calming, Site A  
 Highbury Rd/Grange Rd

Crown copyright. All rights reserved. Birmingham City Council 100021326.

SCHEME		Kings Heath and Moseley PTP Package 1			
DRAWN	DATE	DESIGNER	REVISIONS	DRN	PM
AJT	06/11/23	AB	CM 06/11/23	-	-
DRAWING STATUS				SCALE	
GENERAL				1:200	
DWG. No		L00228 S1 015-1			

A3