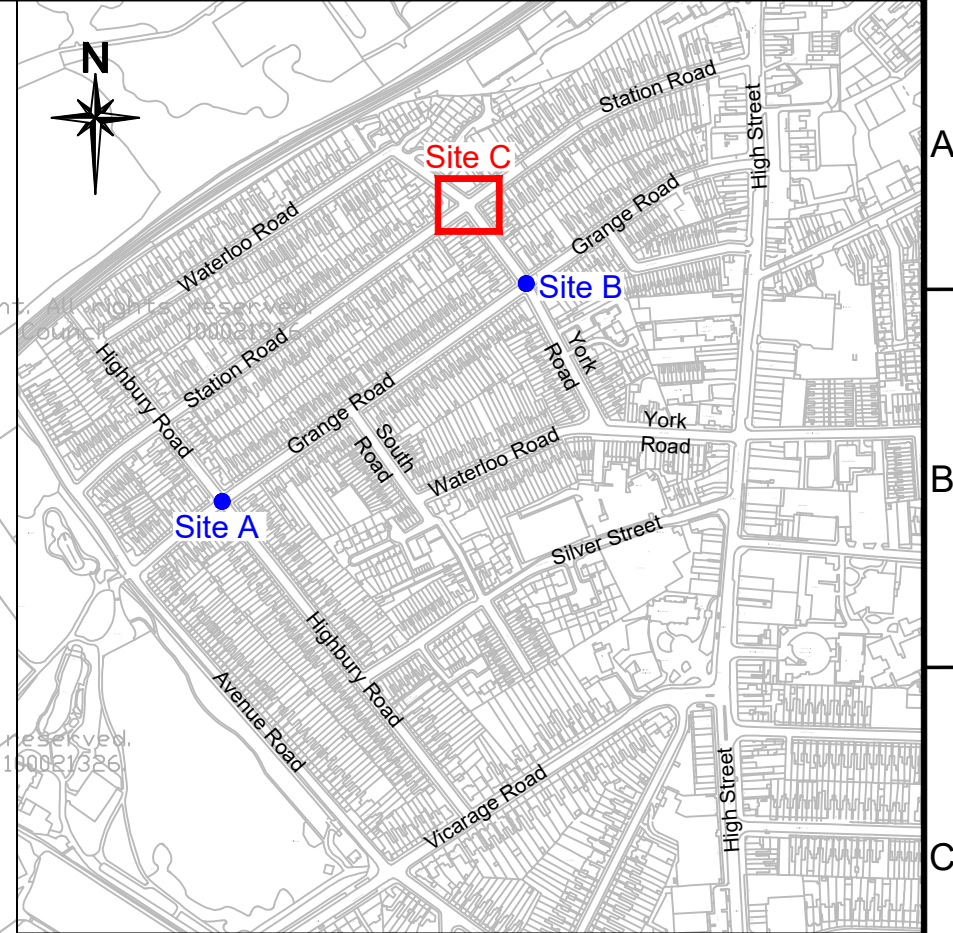
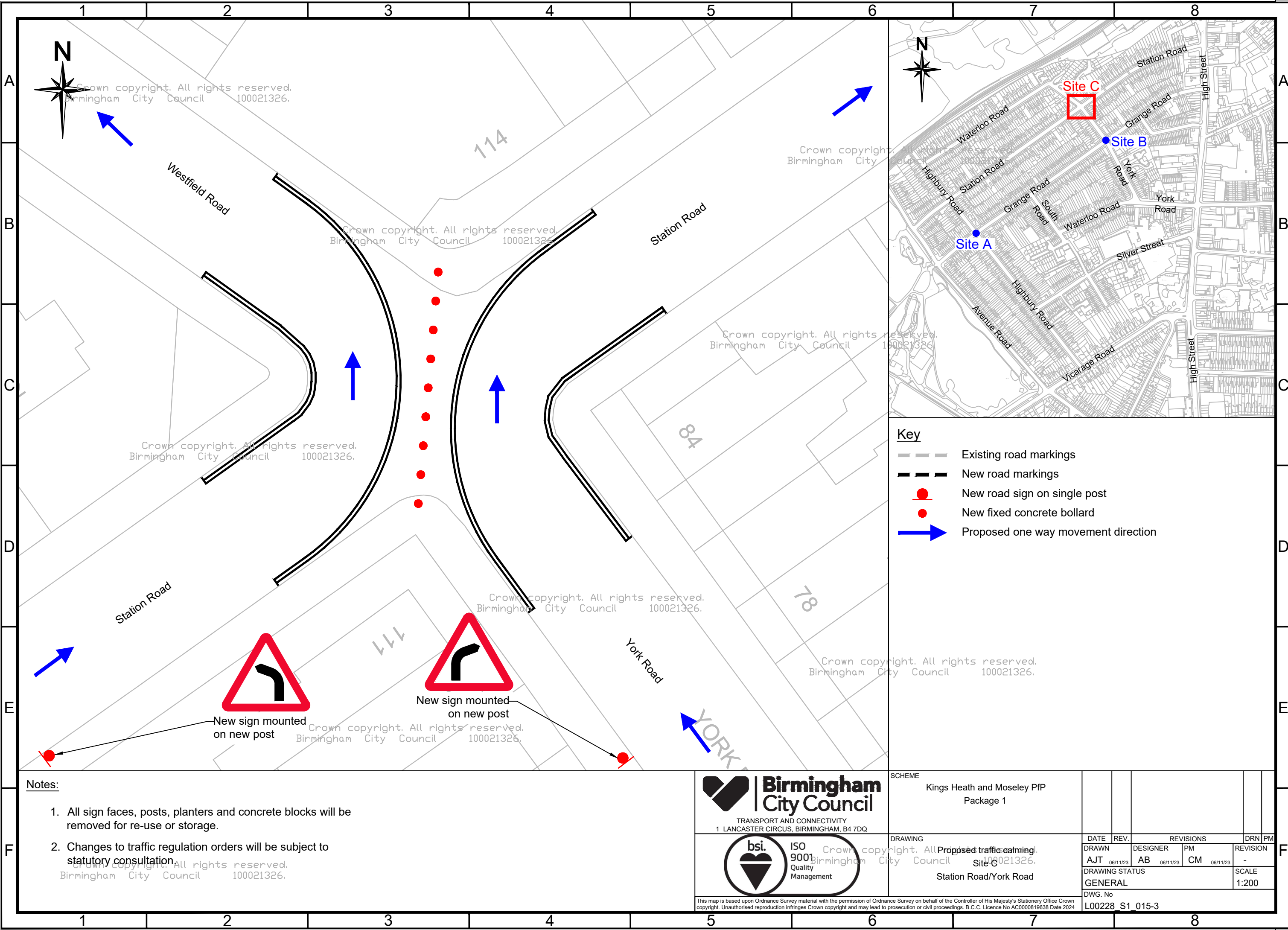
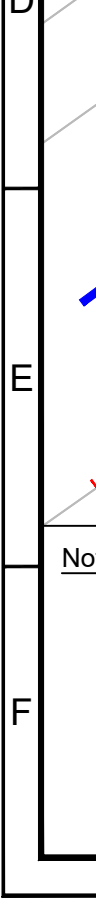


FILE PATH - X:\Commissions\L00228 Kings Heath and Moseley Places for People\4.0 Drawings\01 - Package 1\03 - Approved Drawings\L00228_S1_015-01 - .dwg



Key

- Existing road markings
- New road markings
- New road sign on single post
- New fixed concrete bollard
- Proposed one way movement direction



Notes:

- All sign faces, posts, planters and concrete blocks will be removed for re-use or storage.
- Changes to traffic regulation orders will be subject to statutory consultation.

Birmingham City Council
 TRANSPORT AND CONNECTIVITY
 1 LANCASTER CIRCUS, BIRMINGHAM, B4 7DQ

bsi ISO 9001 Quality Management

Proposed traffic calming
 Birmingham City Council Site C

SCHEME		Kings Heath and Moseley PTP Package 1		DATE	REV.	REVISIONS		DRN	PM
DRAWN	DESIGNER	PM	REVISION						
AJT	AB	CM	-						
DRAWING STATUS			SCALE						
GENERAL			1:200						
DWG. No				L00228 S1 015-3					

This map is based upon Ordnance Survey material with the permission of Ordnance Survey on behalf of the Controller of His Majesty's Stationery Office Crown copyright. Unauthorised reproduction infringes Crown copyright and may lead to prosecution or civil proceedings. B.C.C. Licence No AC0000819638 Date 2024