

**LONGBRIDGE CONNECTIVITY  
LANDSCAPE SCHEME - BRISTOL  
ROAD SOUTH  
DRAWING NO. CA-02712\_S1\_075**

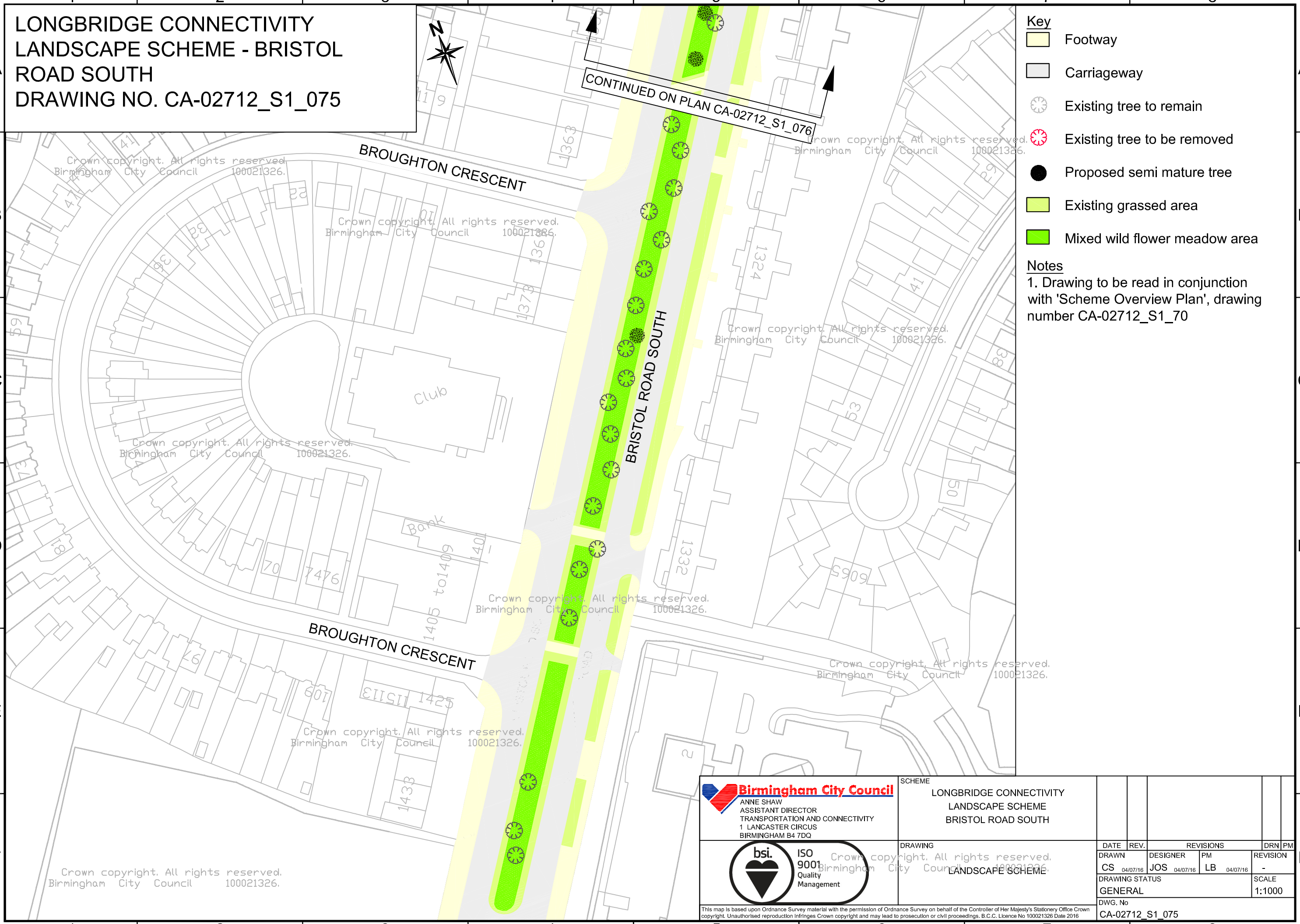
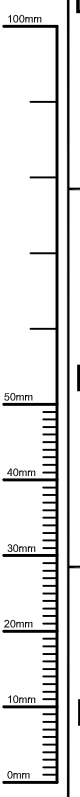


CONTINUED ON PLAN CA-02712\_S1\_076

- Key**
- Footway
  - Carriageway
  - Existing tree to remain
  - Existing tree to be removed
  - Proposed semi mature tree
  - Existing grassed area
  - Mixed wild flower meadow area

**Notes**  
1. Drawing to be read in conjunction with 'Scheme Overview Plan', drawing number CA-02712\_S1\_70

FILE PATH: X:\ACAD\dwg\GIS\Commissions\CA-02712 Longbridge Connectivity\01 Longbridge Lane Junctions\03 Approved Drawings\CA-02712\_S1\_075 Rev. Landscaping Bristol Road South 4.dwg



**Birmingham City Council**  
ANNE SHAW  
ASSISTANT DIRECTOR  
TRANSPORTATION AND CONNECTIVITY  
1 LANCASTER CIRCUS  
BIRMINGHAM B4 7DQ



SCHEME  
LONGBRIDGE CONNECTIVITY  
LANDSCAPE SCHEME  
BRISTOL ROAD SOUTH

DRAWING  
LONGBRIDGE CONNECTIVITY  
LANDSCAPE SCHEME

DATE	REV.	DESIGNER	PM	REVISIONS	DRN	PM
CS	04/07/16	JOS	04/07/16	LB	04/07/16	-
DRAWING STATUS						SCALE
GENERAL						1:1000
DWG. No						CA-02712_S1_075

This map is based upon Ordnance Survey material with the permission of Ordnance Survey on behalf of the Controller of Her Majesty's Stationery Office Crown copyright. Unauthorised reproduction infringes Crown copyright and may lead to prosecution or civil proceedings. B.C.C. Licence No 100021326 Date 2016