

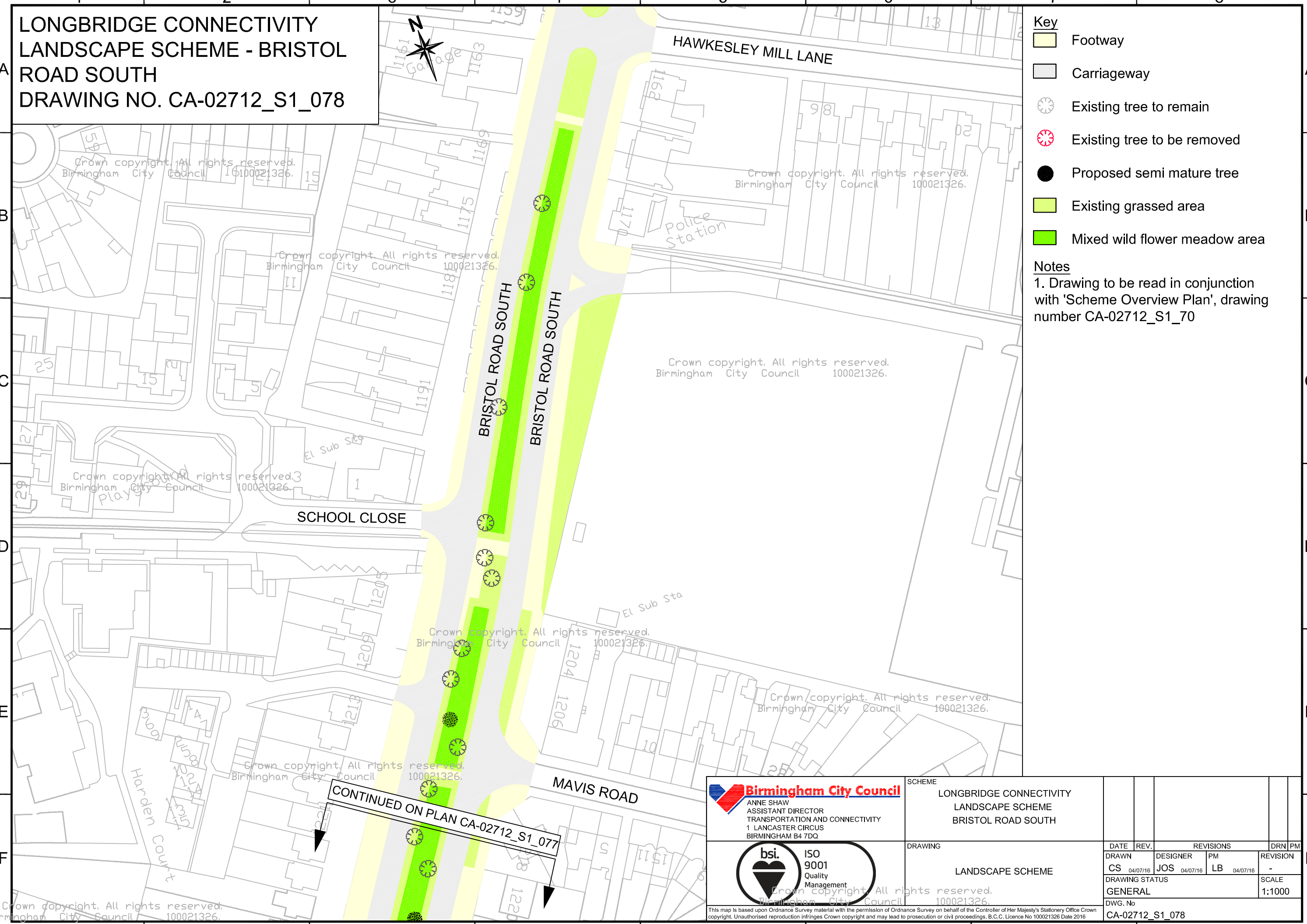
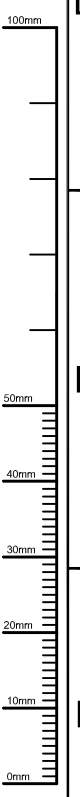
**LANGBRIDGE CONNECTIVITY  
LANDSCAPE SCHEME - BRISTOL  
ROAD SOUTH  
DRAWING NO. CA-02712\_S1\_078**



- Key**
- Footway
  - Carriageway
  - Existing tree to remain
  - Existing tree to be removed
  - Proposed semi mature tree
  - Existing grassed area
  - Mixed wild flower meadow area

**Notes**  
1. Drawing to be read in conjunction with 'Scheme Overview Plan', drawing number CA-02712\_S1\_70

FILE PATH: X:\ACAD\dwg\at\Commissioners\CA-02712\_Langbridge\_Connectivity\01\_Langbridge\_Connectivity\_C\_A02712\_S1\_078\_Rev\_Landscaping\_Bristol\_Road\_South.dwg



**CONTINUED ON PLAN CA-02712\_S1\_077**

**Birmingham City Council**  
ANNE SHAW  
ASSISTANT DIRECTOR  
TRANSPORTATION AND CONNECTIVITY  
1 LANCASTER CIRCUS  
BIRMINGHAM B4 7DQ



SCHEME		LONGBRIDGE CONNECTIVITY LANDSCAPE SCHEME BRISTOL ROAD SOUTH	
DRAWING		LANDSCAPE SCHEME	
DATE	REV.	DESIGNER	REVISIONS
CS	04/07/16	JOS	04/07/16
DRAWING STATUS		PM	LB
GENERAL		04/07/16	-
DWG. No		SCALE	
CA-02712_S1_078		1:1000	

This map is based upon Ordnance Survey material with the permission of Ordnance Survey on behalf of the Controller of Her Majesty's Stationery Office Crown copyright. Unauthorised reproduction infringes Crown copyright and may lead to prosecution or civil proceedings. B.C.C. Licence No 100021326 Date 2016