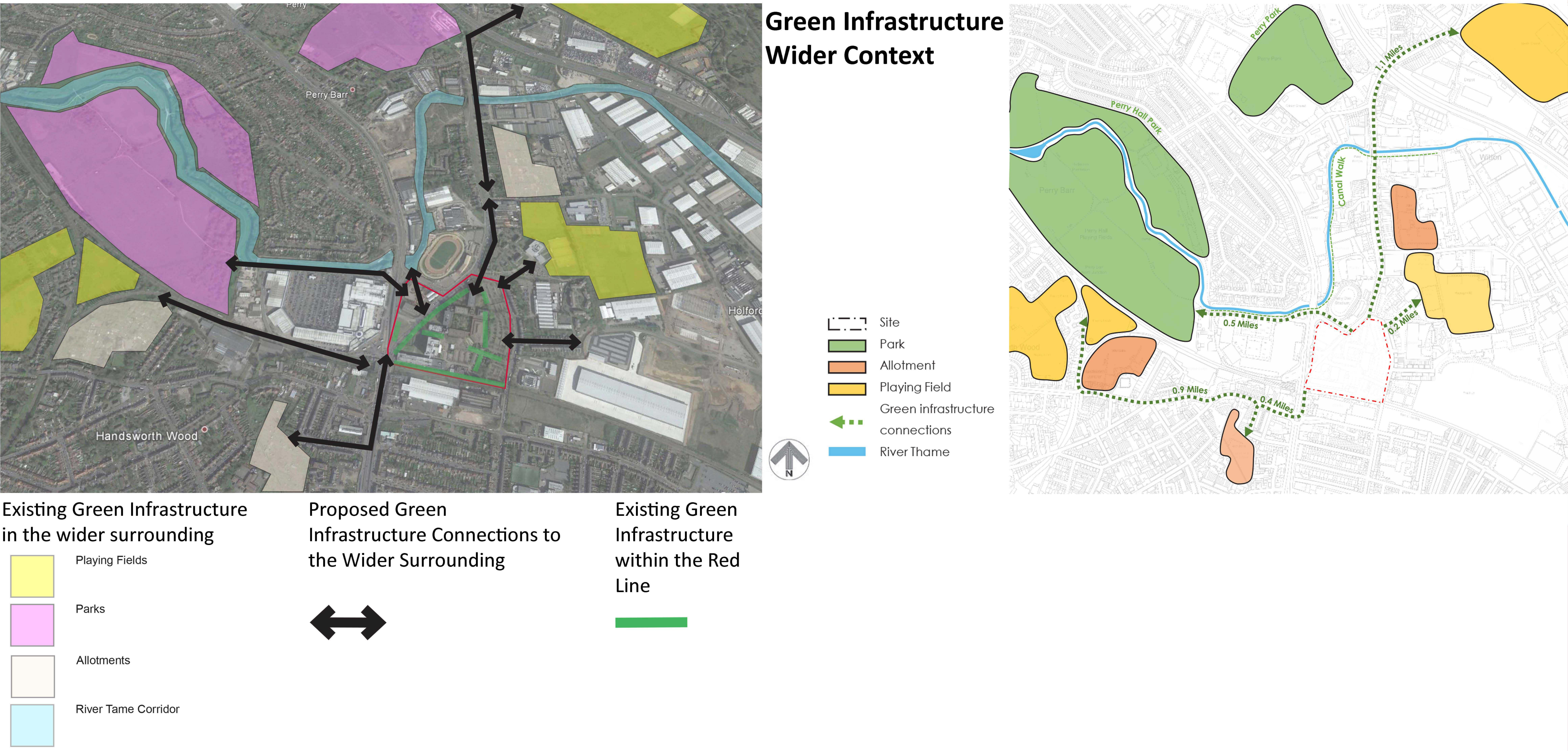


Landscape Strategy

The proposed development has been landscape-led and retains significant numbers of the existing mature trees and landscape infrastructure on site.

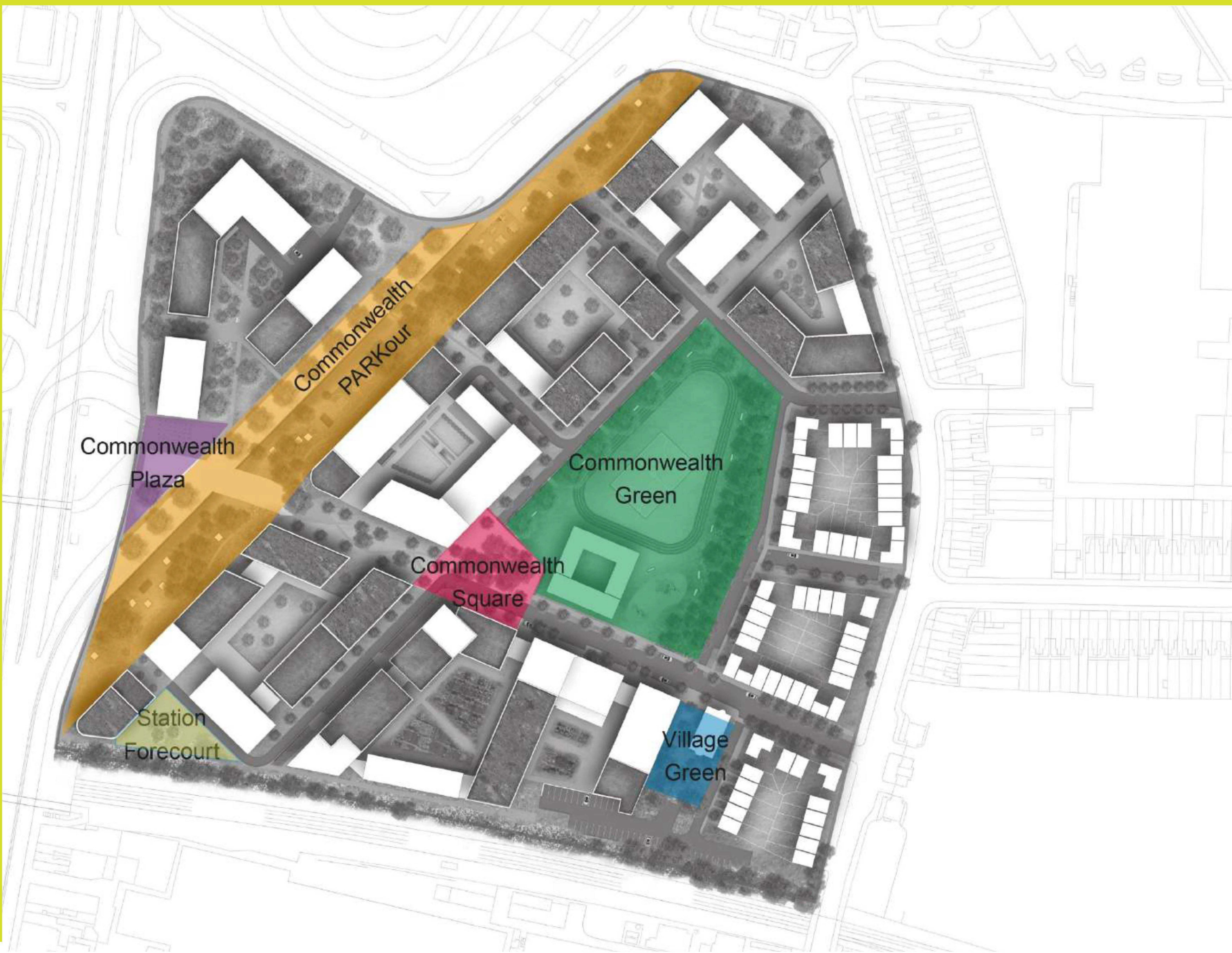


Green and Blue Infrastructure

The masterplan includes significant green and blue infrastructure including a new Commonwealth Green’ and linear ‘Commonwealth PARKour’ corridor with integrated sports and recreation facilities, sustainable drainage and green roofs and new allotments and woodland.

Our proposals include:

- Keeping approximately 50% of the existing tree canopies to protect key habitat corridors and to soften the edges of the development.
- Adding soft green infrastructure elements to fill gaps and to connect elements within the development.
- Introducing blue infrastructure elements along the streets with formal and informal swales and ponds.
- Providing community facilities for food production such as allotments, community, rooftop and private gardens.
- Introducing two areas of public open space related to the Games, the Commonwealth Gardens and Commonwealth Plaza/Square.
- Defining a safe corridor of play/sports for the communities.
- Enhancing biodiversity by introducing green roofs.



Perry Barr Green Public Open Spaces - a Walk From Perry Barr Station Through Perry Green

Materials and Planting Palette

The materials palette will be designed to complement the proposed architecture and cultural heritage of the site. It will:

- Provide a distinctive, contemporary scheme with a strong sense of place.
- Provide legibility.
- Be accessible to all users.
- Enhance biodiversity.

