

Public Realm Proposals

Paving Materials - Footway & Paving Crossing

In keeping with local context and the historic environment we have selected a warm materials palette which compliments key buildings and creates a continuation of the existing developments such as Snow Hill Campus, throughout the scheme to create a unified finish.

The footways, will be;

- A granite blend of five finishes
- Have a repeating pattern
- Rigid construction - especially overrun areas
- Wide pink granite kerbs

Footways along Livery Street will be;

- York stone slabs and the detail will match that on Church Street
- Wide pink granite kerbs

It is proposed that the crossings should be constructed of granite setts bedded on a concrete foundation slab using a specialist Stentech type mortar product.

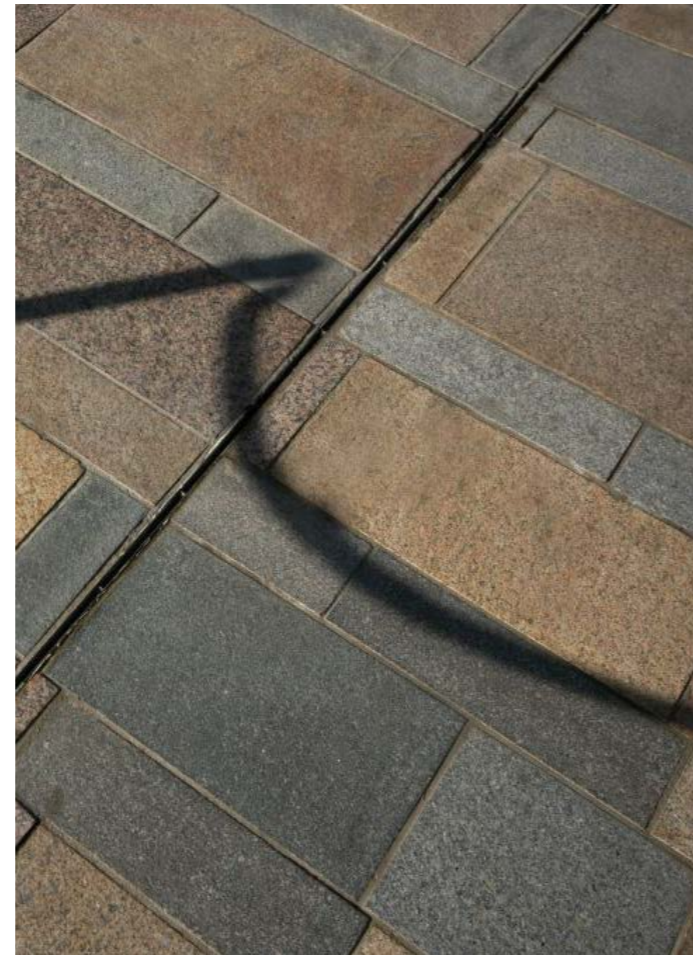


Image: Granite Blend of five shades, Snow Hill Campus



Image: Yorkstone, Church Street



- Key
- Proposed New Paving - Type 1
 - Proposed New Paving - Type 2
 - Carriageway
 - Paving to be installed under separate contract

GRANITE PAVING BLEND - TYPE 1

