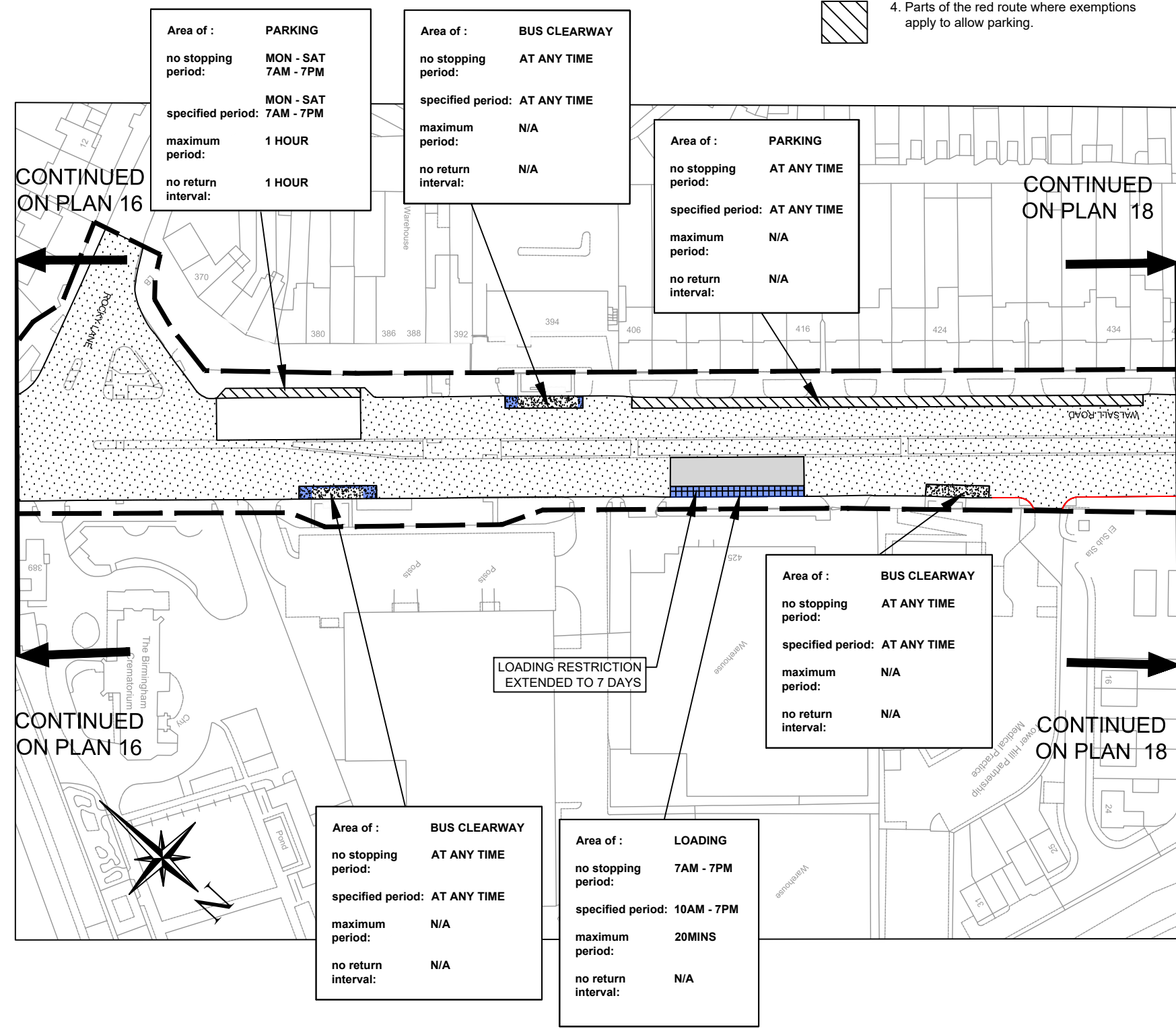


c:\pwworking\aeacom_ds03_uk\eva.garciaaboa@aeacom.com\d0128414\60599248-ACM-2600-0000-DR-TR-001017.dwg

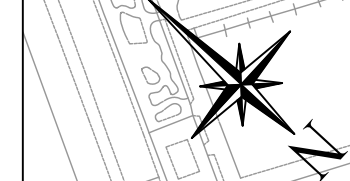
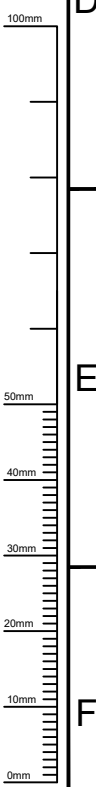
KEY :-

shading type	meaning	relevant articles	shading type	meaning	relevant articles
	Boundary of area within which Red Route controls apply (restricted hours Monday to Saturday, 7am - 7pm)	3.1.1 3.1.2		5. Parts of red route where exemptions apply for parking solo motor cycles.	3.2.3
	1. Parts of red route where 'no stopping' controls apply between 7am - 7pm on any day.	3.1.6		6. Parts of red route where exemptions apply for parking vehicles which display a disabled persons badge in the relevant position.	3.2.5
	2. Parts of red route where 'no stopping' controls apply at any time.	3.1.7		7. Parts of red route where exemptions apply to allow loading and unloading.	3.2.7
	3. Parts of red route where 'Red Route Bus Clearway' controls apply.	3.1.8		8. Parts of red route where exemptions apply to allow either loading and unloading or for parking vehicles which display a disabled persons badge in the relevant position.	3.2.9
	4. Parts of the red route where exemptions apply to allow parking.	3.2.1		9. Parts of red route where exemptions apply for parking buses	3.2.12

All times are inclusive



- Proposed Kerb Line
- Existing kerb line
- Existing restrictions re-aligned to reflect new geometry of the highway
- Proposed restrictions shown highlighted blue (Drawing amendments required to reflect changes to national guidance, that do not impact upon kerbside restrictions, are not highlighted for clarity)



22/06/20	C01	FOR ADVERTISING	EGT	PE
10/06/20	P04	KEY AND COMMENTS CHANGES	EMF	RS
29/05/20	P03	SPRINT RR TRO CHANGES	RS	PE
04/03/20	P02	SPRINT RR TRO CHANGES	EGT	PE
31/01/20	P01	SPRINT RR TRO CHANGES	EGT	PE
DATE	REV.	REVISIONS	DRN	PM

Birmingham City Council

SCHEME: WALSALL ROAD ETC BIRMINGHAM

DRAWING: BIRMINGHAM CITY COUNCIL (WALSALL ROAD ETC BIRMINGHAM) (RED ROUTE) ORDER 202* TRAFFIC REGULATION ORDER PLAN PLAN NO. 17 OF 24

EFFECTIVE DATE:

DRAWN	DESIGNER	PM	REVISION
EMF	AEC	PE	C01

DRAWING STATUS: INFORMATION SCALE: 1:1250

DWG. No: 60599248-ACM-2600-0000-DR-TR-001017

This map is based upon Ordnance Survey material with the permission of Ordnance Survey on behalf of the Controller of Her Majesty's Stationery Office Crown copyright. Unauthorised reproduction infringes Crown copyright and may lead to prosecution or civil proceedings. B.C.C. Licence No 100031673 Date 2020