

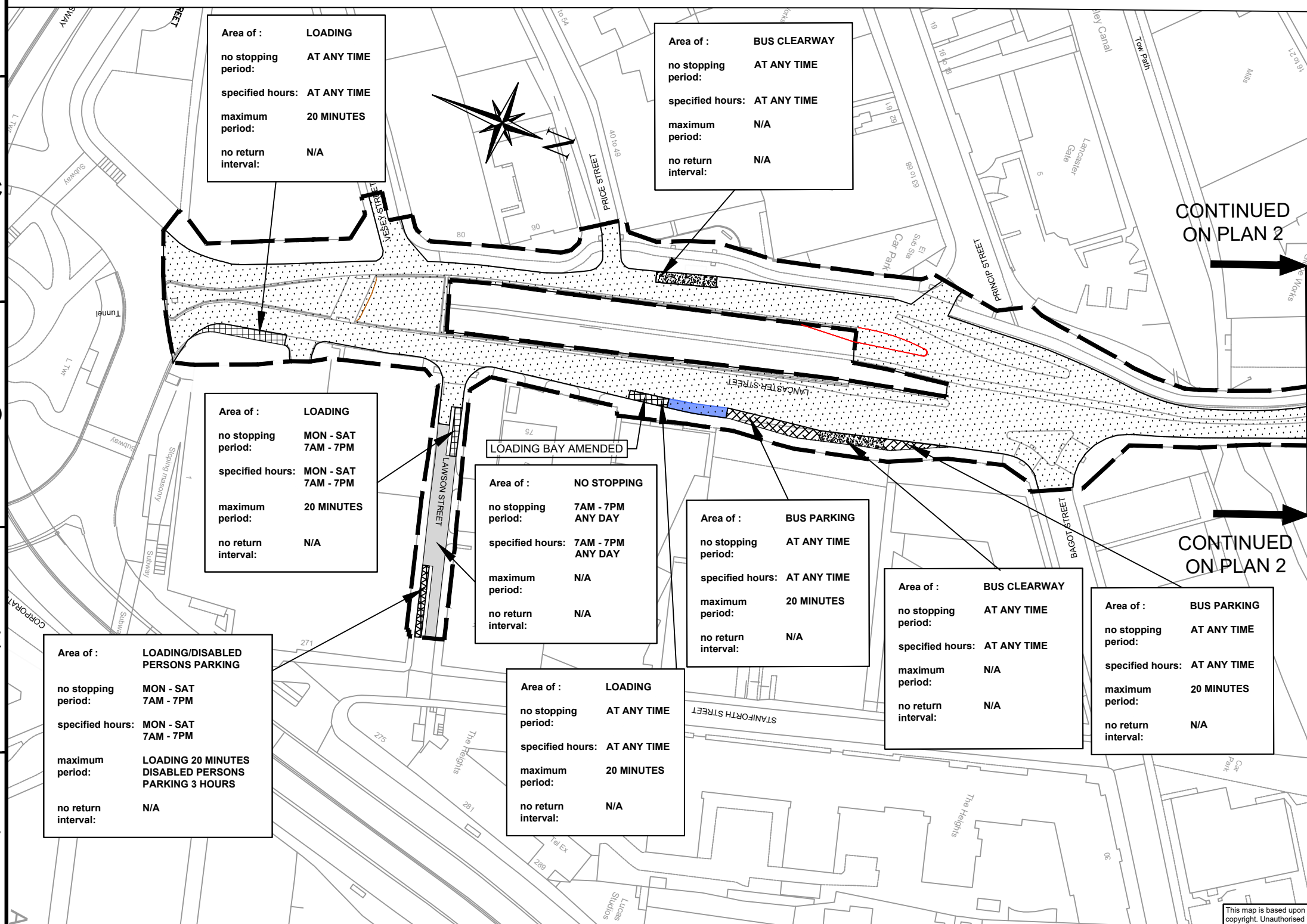
C:\pwworking\aeocom_ds03_ukross.stratford@aeocom.com\id128414\60599248-ACM-2600-0000-DR-TR-001001.dwg

KEY :-

| shading type | meaning | relevant articles | shading type | meaning | relevant articles |
|--------------|---|-------------------|--------------|---|-------------------|
| | Boundary of area within which Red Route controls apply (restricted hours Monday to Saturday, 7am - 7pm) | 3.1.1 3.1.2 | | 5. Parts of red route where exemptions apply for parking solo motor cycles. | 3.2.3 |
| | 1. Parts of red route where 'no stopping' controls apply between 7am - 7pm on any day. | 3.1.6 | | 6. Parts of red route where exemptions apply for parking vehicles which display a disabled persons badge in the relevant position. | 3.2.5 |
| | 2. Parts of red route where 'no stopping' controls apply at any time. | 3.1.7 | | 7. Parts of red route where exemptions apply to allow loading and unloading. | 3.2.7 |
| | 3. Parts of red route where 'Red Route Bus Clearway' controls apply. | 3.1.8 | | 8. Parts of red route where exemptions apply to allow either loading and unloading or for parking vehicles which display a disabled persons badge in the relevant position. | 3.2.9 |
| | 4. Parts of the red route where exemptions apply to allow parking. | 3.2.1 | | 9. Parts of red route where exemptions apply for parking buses | 3.2.12 |

All times are inclusive

- Proposed Kerb Line
- Existing kerb line
- Existing restrictions re-aligned to reflect new geometry of the highway
- Proposed restrictions shown highlighted blue (Drawing amendments required to reflect changes to national guidance, that do not impact upon kerbside restrictions, are not highlighted for clarity)



CONTINUED ON PLAN 2

CONTINUED ON PLAN 2

| DATE | REV. | REVISIONS | DRN | PM |
|----------|------|--------------------------|-----|----|
| 02/07/21 | C02 | FOR ADVERTISING | RS | PE |
| 09/03/21 | P05 | SPRINT RR TRO CHANGES | RS | PE |
| 22/06/20 | C01 | FOR ADVERTISING | EGT | PE |
| 10/06/20 | P04 | KEY AND COMMENTS CHANGES | EMF | PE |
| 29/05/20 | P03 | SPRINT RR TRO CHANGES | RS | PE |
| 04/03/20 | P02 | SPRINT RR TRO CHANGES | EGT | PE |
| 31/01/20 | P01 | SPRINT RR TRO CHANGES | EGT | PE |



SCHEME
WALSALL ROAD ETC BIRMINGHAM

DRAWING
BIRMINGHAM CITY COUNCIL
(WALSALL ROAD ETC BIRMINGHAM)
(RED ROUTE)
ORDER 202*
TRAFFIC REGULATION ORDER PLAN
PLAN NO. 1 OF 24

EFFECTIVE DATE:

| DRAWN | DESIGNER | PM | REVISION |
|-------|----------|----|----------|
| EMF | AEC | PE | C02 |

DRAWING STATUS
INFORMATION

SCALE
1:1250

DWG. No
60599248-ACM-2600-0000-DR-TR-001001

This map is based upon Ordnance Survey material with the permission of Ordnance Survey on behalf of the Controller of Her Majesty's Stationery Office Crown copyright. Unauthorised reproduction infringes Crown copyright and may lead to prosecution or civil proceedings. B.C.C. Licence No 100031673 Date 2020