

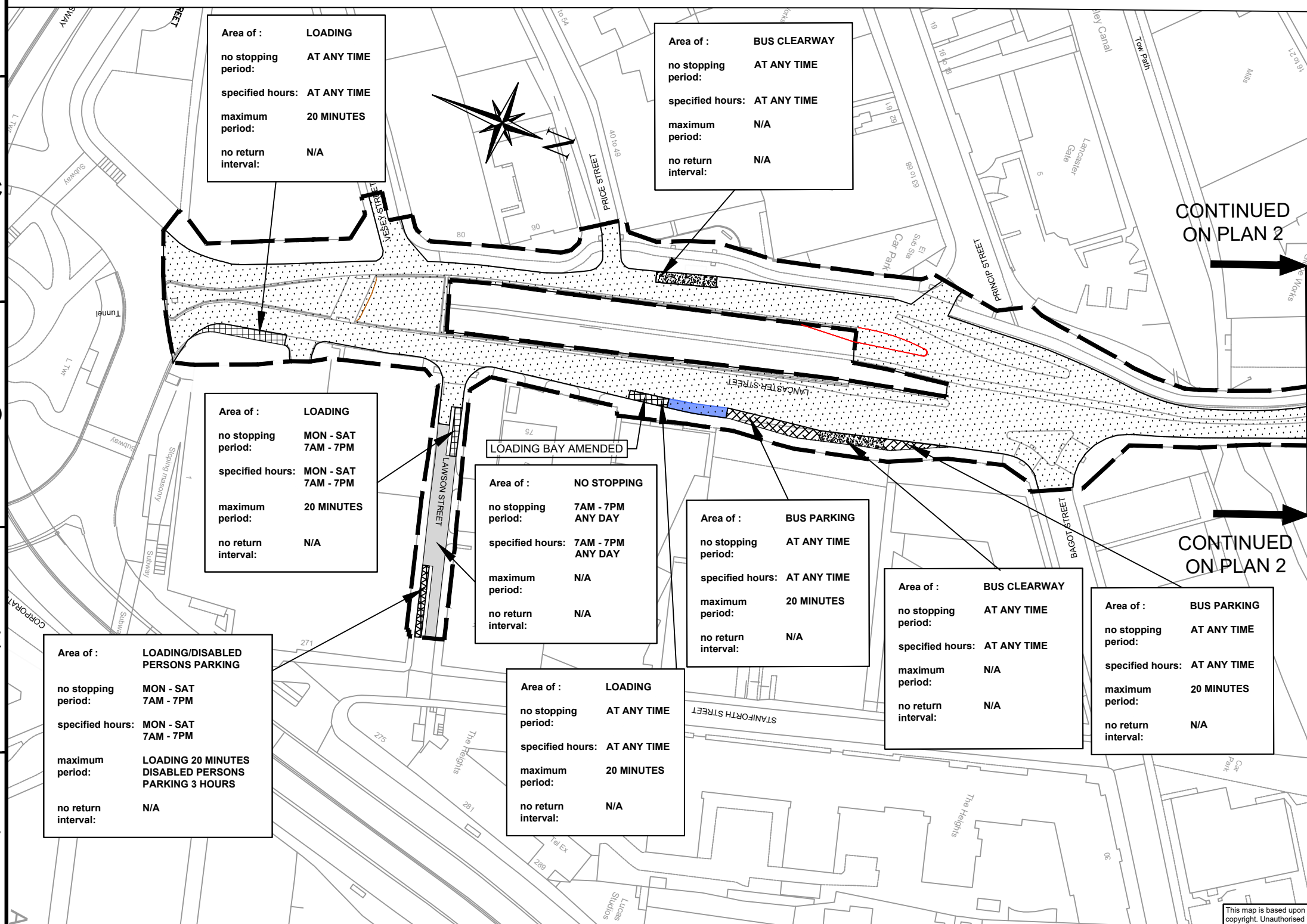
C:\pwworking\aeocom_ds03_ukross.stratford@aecom.com\id128414\60599248-ACM-2600-0000-DR-TR-001001.dwg

KEY :-

shading type	meaning	relevant articles	shading type	meaning	relevant articles
	Boundary of area within which Red Route controls apply (restricted hours Monday to Saturday, 7am - 7pm)	3.1.1 3.1.2		5. Parts of red route where exemptions apply for parking solo motor cycles.	3.2.3
	1. Parts of red route where 'no stopping' controls apply between 7am - 7pm on any day.	3.1.6		6. Parts of red route where exemptions apply for parking vehicles which display a disabled persons badge in the relevant position.	3.2.5
	2. Parts of red route where 'no stopping' controls apply at any time.	3.1.7		7. Parts of red route where exemptions apply to allow loading and unloading.	3.2.7
	3. Parts of red route where 'Red Route Bus Clearway' controls apply.	3.1.8		8. Parts of red route where exemptions apply to allow either loading and unloading or for parking vehicles which display a disabled persons badge in the relevant position.	3.2.9
	4. Parts of the red route where exemptions apply to allow parking.	3.2.1		9. Parts of red route where exemptions apply for parking buses	3.2.12

All times are inclusive

- Proposed Kerb Line
- Existing kerb line
- Existing restrictions re-aligned to reflect new geometry of the highway
- Proposed restrictions shown highlighted blue (Drawing amendments required to reflect changes to national guidance, that do not impact upon kerbside restrictions, are not highlighted for clarity)



CONTINUED ON PLAN 2

CONTINUED ON PLAN 2

DATE	REV.	REVISIONS	DRN	PM
02/07/21	C02	FOR ADVERTISING	RS	PE
09/03/21	P05	SPRINT RR TRO CHANGES	RS	PE
22/06/20	C01	FOR ADVERTISING	EGT	PE
10/06/20	P04	KEY AND COMMENTS CHANGES	EMF	PE
29/05/20	P03	SPRINT RR TRO CHANGES	RS	PE
04/03/20	P02	SPRINT RR TRO CHANGES	EGT	PE
31/01/20	P01	SPRINT RR TRO CHANGES	EGT	PE



SCHEME
WALSALL ROAD ETC BIRMINGHAM

DRAWING
BIRMINGHAM CITY COUNCIL
(WALSALL ROAD ETC BIRMINGHAM)
(RED ROUTE)
ORDER 202*
TRAFFIC REGULATION ORDER PLAN
PLAN NO. 1 OF 24

EFFECTIVE DATE:

DRAWN	DESIGNER	PM	REVISION
EMF	AEC	PE	C02

DRAWING STATUS
INFORMATION

DWG. No
60599248-ACM-2600-0000-DR-TR-001001

SCALE
1:1250

This map is based upon Ordnance Survey material with the permission of Ordnance Survey on behalf of the Controller of Her Majesty's Stationery Office Crown copyright. Unauthorised reproduction infringes Crown copyright and may lead to prosecution or civil proceedings. B.C.C. Licence No 100031673 Date 2020

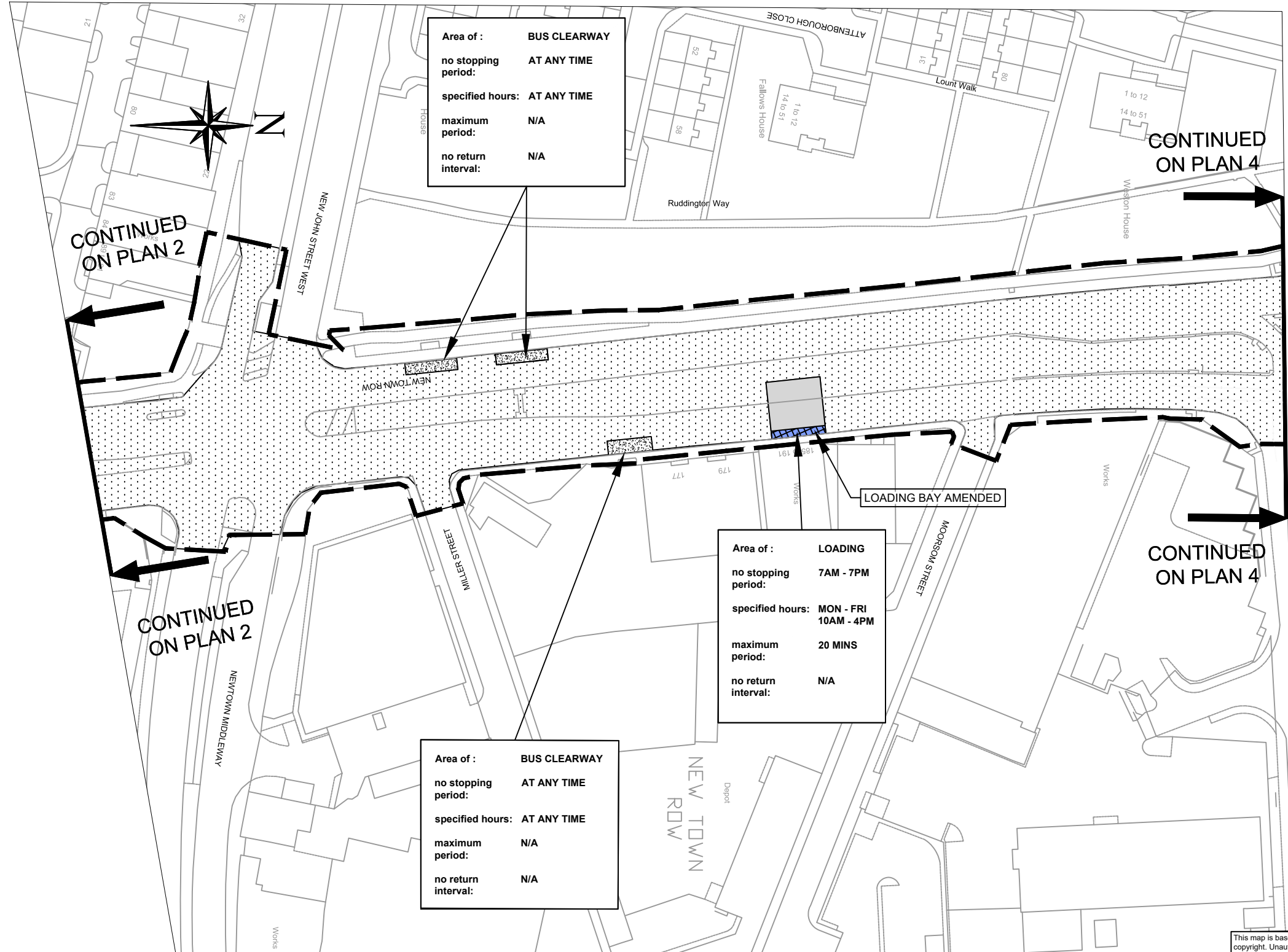
C:\pwworking\aeocom_ds03_ukross.stratford@aecom.com\d0128414\60599248-ACM-2600-0000-DR-TR-001003.dwg

KEY :-

shading type	meaning	relevant articles	shading type	meaning	relevant articles
	Boundary of area within which Red Route controls apply (restricted hours Monday to Saturday, 7am - 7pm)	3.1.1 3.1.2		5. Parts of red route where exemptions apply for parking solo motor cycles.	3.2.3
	1. Parts of red route where 'no stopping' controls apply between 7am - 7pm on any day.	3.1.6		6. Parts of red route where exemptions apply for parking vehicles which display a disabled persons badge in the relevant position.	3.2.5
	2. Parts of red route where 'no stopping' controls apply at any time.	3.1.7		7. Parts of red route where exemptions apply to allow loading and unloading.	3.2.7
	3. Parts of red route where 'Red Route Bus Clearway' controls apply.	3.1.8		8. Parts of red route where exemptions apply to allow either loading and unloading or for parking vehicles which display a disabled persons badge in the relevant position.	3.2.9
	4. Parts of the red route where exemptions apply to allow parking.	3.2.1		9. Parts of red route where exemptions apply for parking buses	3.2.12

All times are inclusive

- Proposed Kerb Line
- Existing kerb line
- Existing restrictions re-aligned to reflect new geometry of the highway
- Proposed restrictions shown highlighted blue (Drawing amendments required to reflect changes to national guidance, that do not impact upon kerbside restrictions, are not highlighted for clarity)



02/07/21	C02	FOR ADVERTISING	RS	PE
09/03/21	P06	SPRINT RR TRO CHANGES	RS	PE
15/12/20	P05	SPRINT RR TRO CHANGES	RS	PE
22/06/20	C01	FOR ADVERTISING	EGT	PE
10/06/20	P04	KEY AND COMMENTS CHANGES	EMF	PE
29/05/20	P03	SPRINT RR TRO CHANGES	RS	PE
04/03/20	P02	SPRINT RR TRO CHANGES	EGT	PE
DATE	REV.	REVISIONS	DRN	PM

Birmingham City Council

SCHEME
WALSALL ROAD ETC BIRMINGHAM

DRAWING
BIRMINGHAM CITY COUNCIL
(WALSALL ROAD ETC BIRMINGHAM)
(RED ROUTE)
ORDER 202*
TRAFFIC REGULATION ORDER PLAN
PLAN NO. 3 OF 24

EFFECTIVE DATE:

DRAWN	DESIGNER	PM	REVISION
EGT	AEC	PE	C02

DRAWING STATUS
INFORMATION

DWG. No
60599248-ACM-2600-0000-DR-TR-001003

SCALE
1:1250

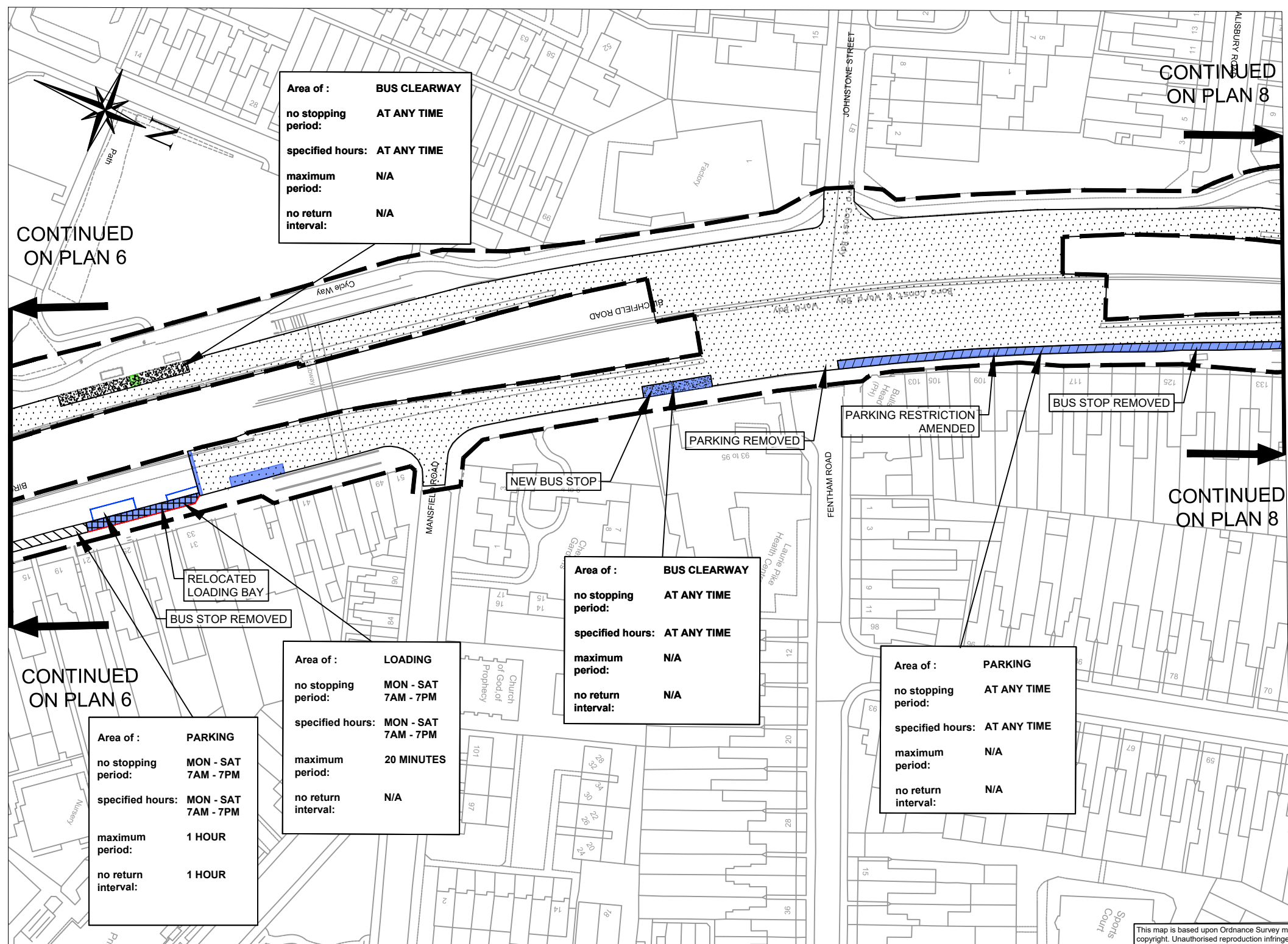
This map is based upon Ordnance Survey material with the permission of Ordnance Survey on behalf of the Controller of Her Majesty's Stationery Office Crown copyright. Unauthorised reproduction infringes Crown copyright and may lead to prosecution or civil proceedings. B.C.C. Licence No 100031673 Date 2020

C:\pwworking\aeocom_ds03_ukross\stratford@aeocom.com\d0128414\60599248-ACM-2600-0000-DR-TR-001007.dwg

KEY :-

shading type	meaning	relevant articles	shading type	meaning	relevant articles
	Boundary of area within which Red Route controls apply (restricted hours Monday to Saturday, 7am - 7pm)	3.1.1 3.1.2		5. Parts of red route where exemptions apply for parking solo motor cycles.	3.2.3
	1. Parts of red route where 'no stopping' controls apply between 7am - 7pm on any day.	3.1.6		6. Parts of red route where exemptions apply for parking vehicles which display a disabled persons badge in the relevant position.	3.2.5
	2. Parts of red route where 'no stopping' controls apply at any time.	3.1.7		7. Parts of red route where exemptions apply to allow loading and unloading.	3.2.7
	3. Parts of red route where 'Red Route Bus Clearway' controls apply.	3.1.8		8. Parts of red route where exemptions apply to allow either loading and unloading or for parking vehicles which display a disabled persons badge in the relevant position.	3.2.9
	4. Parts of the red route where exemptions apply to allow parking.	3.2.1		9. Parts of red route where exemptions apply for parking buses	3.2.12

All times are inclusive



- Proposed Kerb Line
- Existing kerb line
- Existing restrictions re-aligned to reflect new geometry of the highway
- Proposed restrictions shown highlighted blue (Drawing amendments required to reflect changes to national guidance, that do not impact upon kerbside restrictions, are not highlighted for clarity)
- Proposed restriction advertised between 29th June 2020 and 20th July 2020 shown highlighted green

DATE	REV.	REVISIONS	DRN	PM
02/07/21	C02	FOR ADVERTISING	RS	PE
14/05/21	P07	SPRINT RR TRO CHANGES	RS	PE
09/03/21	P06	SPRINT RR TRO CHANGES	RS	PE
15/12/20	P05	SPRINT RR TRO CHANGES	RS	PE
22/06/20	C01	FOR ADVERTISING	EGT	PE
10/06/20	P04	KEY AND COMMENTS CHANGES	EMF	PE
29/05/20	P03	SPRINT RR TRO CHANGES	RS	PE



SCHEME
WALSALL ROAD ETC BIRMINGHAM

DRAWING
BIRMINGHAM CITY COUNCIL
(WALSALL ROAD ETC BIRMINGHAM)
(RED ROUTE)
ORDER 202*
TRAFFIC REGULATION ORDER PLAN
PLAN NO. 7 OF 24

EFFECTIVE DATE:

DRAWN	DESIGNER	PM	REVISION
EMF	AEC	PE	C02

DRAWING STATUS
INFORMATION

DWG. No
60599248-ACM-2600-0000-DR-TR-001007

SCALE
1:1250

This map is based upon Ordnance Survey material with the permission of Ordnance Survey on behalf of the Controller of Her Majesty's Stationery Office Crown copyright. Unauthorised reproduction infringes Crown copyright and may lead to prosecution or civil proceedings. B.C.C. Licence No 100031673 Date 2020

C:\pwworking\aeocom_ds03_ukross.stratford@aecom.com\d0128414\60599248-ACM-2600-0000-DR-TR-001008.dwg

KEY :-

shading type	meaning	relevant articles	shading type	meaning	relevant articles
	Boundary of area within which Red Route controls apply (restricted hours Monday to Saturday, 7am - 7pm)	3.1.1 3.1.2		5. Parts of red route where exemptions apply for parking solo motor cycles.	3.2.3
	1. Parts of red route where 'no stopping' controls apply between 7am - 7pm on any day.	3.1.6		6. Parts of red route where exemptions apply for parking vehicles which display a disabled persons badge in the relevant position.	3.2.5
	2. Parts of red route where 'no stopping' controls apply at any time.	3.1.7		7. Parts of red route where exemptions apply to allow loading and unloading.	3.2.7
	3. Parts of red route where 'Red Route Bus Clearway' controls apply.	3.1.8		8. Parts of red route where exemptions apply to allow either loading and unloading or for parking vehicles which display a disabled persons badge in the relevant position.	3.2.9
	4. Parts of the red route where exemptions apply to allow parking.	3.2.1		9. Parts of red route where exemptions apply for parking buses	3.2.12

All times are inclusive

- Proposed Kerb Line
- Existing kerb line
- Existing restrictions re-aligned to reflect new geometry of the highway
- Proposed restrictions shown highlighted blue (Drawing amendments required to reflect changes to national guidance, that do not impact upon kerbside restrictions, are not highlighted for clarity)
- Proposed restriction advertised between 29th June 2020 and 20th July 2020 shown highlighted green

Area of : BUS CLEARWAY
 no stopping period: **AT ANY TIME**
 specified hours: **AT ANY TIME**
 maximum period: **N/A**
 no return interval: **N/A**

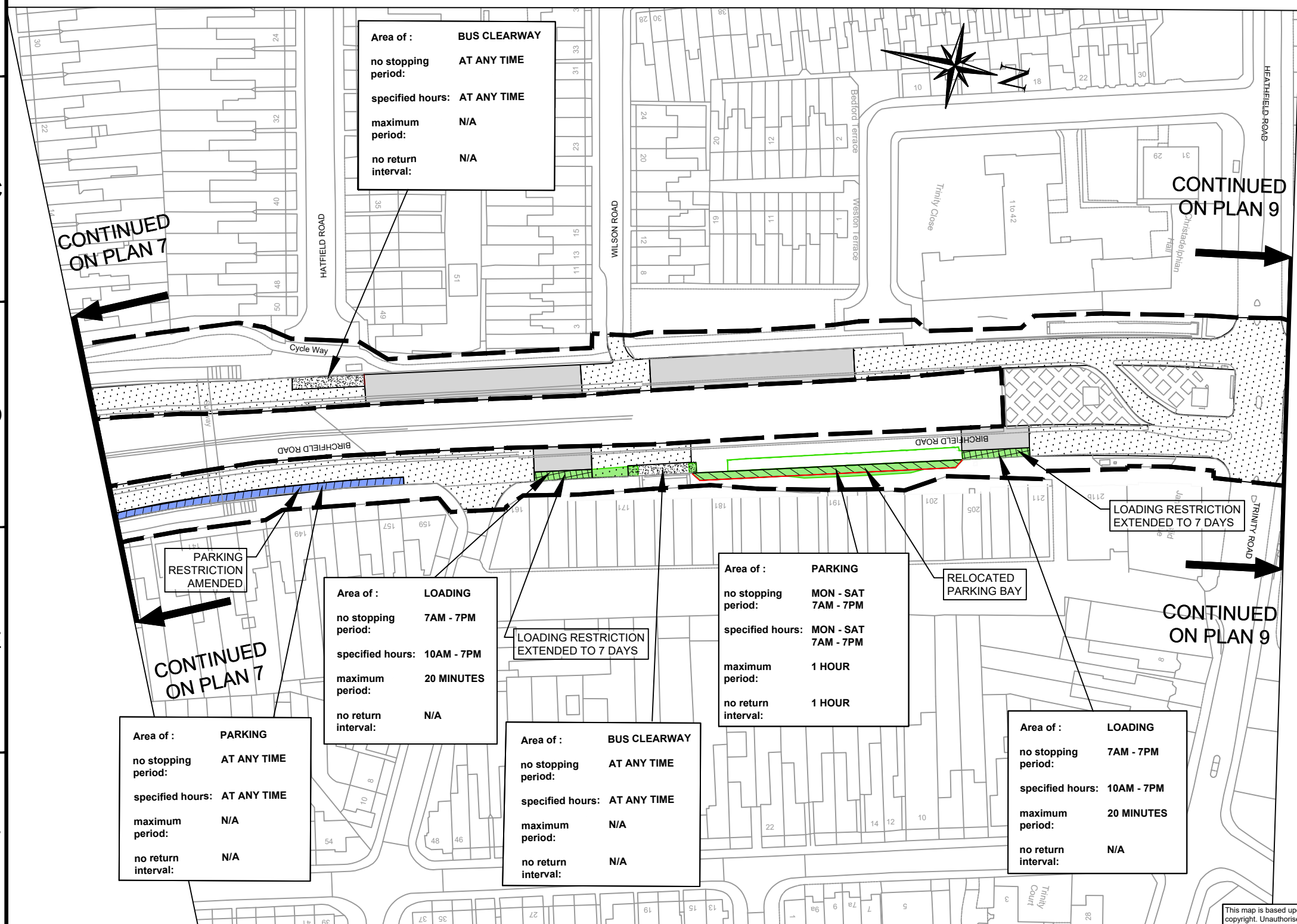
Area of : PARKING
 no stopping period: **MON - SAT 7AM - 7PM**
 specified hours: **MON - SAT 7AM - 7PM**
 maximum period: **1 HOUR**
 no return interval: **1 HOUR**

Area of : PARKING
 no stopping period: **AT ANY TIME**
 specified hours: **AT ANY TIME**
 maximum period: **N/A**
 no return interval: **N/A**

Area of : LOADING
 no stopping period: **7AM - 7PM**
 specified hours: **10AM - 7PM**
 maximum period: **20 MINUTES**
 no return interval: **N/A**

Area of : BUS CLEARWAY
 no stopping period: **AT ANY TIME**
 specified hours: **AT ANY TIME**
 maximum period: **N/A**
 no return interval: **N/A**

Area of : LOADING
 no stopping period: **7AM - 7PM**
 specified hours: **10AM - 7PM**
 maximum period: **20 MINUTES**
 no return interval: **N/A**



DATE	REV.	REVISIONS	DRN	PM
02/07/21	C03	FOR ADVERTISING	RS	PE
14/05/21	P08	SPRINT RR TRO CHANGES	RS	PE
09/03/21	P07	SPRINT RR TRO CHANGES	RS	PE
15/12/20	P06	SPRINT RR TRO CHANGES	RS	PE
23/06/20	C02	FOR ADVERTISING	RS	PE
22/06/20	C01	FOR ADVERTISING	EGT	PE
10/06/20	P04	KEY AND COMMENTS CHANGES	EMF	PE

Birmingham City Council

SCHEME: WALSALL ROAD ETC BIRMINGHAM

DRAWING: BIRMINGHAM CITY COUNCIL (WALSALL ROAD ETC BIRMINGHAM) (RED ROUTE) ORDER 202* TRAFFIC REGULATION ORDER PLAN PLAN NO. 8 OF 24

EFFECTIVE DATE:

DRAWN	DESIGNER	PM	REVISION
EMF	AEC	PE	C03

DRAWING STATUS INFORMATION SCALE: 1:1250

DWG. No: 60599248-ACM-2600-0000-DR-TR-001008

This map is based upon Ordnance Survey material with the permission of Ordnance Survey on behalf of the Controller of Her Majesty's Stationery Office Crown copyright. Unauthorised reproduction infringes Crown copyright and may lead to prosecution or civil proceedings. B.C.C. Licence No 100031673 Date 2020

C:\pwworking\aeocom_d503_ukross\stratford\aeocom\d0128414\60599248-ACM-2600-0000-DR-TR-001010.dwg



KEY :-

shading type	meaning	relevant articles	shading type	meaning	relevant articles
	Boundary of area within which Red Route controls apply (restricted hours Monday to Saturday, 7am - 7pm)	3.1.1 3.1.2		5. Parts of red route where exemptions apply for parking solo motor cycles.	3.2.3
	1. Parts of red route where 'no stopping' controls apply between 7am - 7pm on any day.	3.1.6		6. Parts of red route where exemptions apply for parking vehicles which display a disabled persons badge in the relevant position.	3.2.5
	2. Parts of red route where 'no stopping' controls apply at any time.	3.1.7		7. Parts of red route where exemptions apply to allow loading and unloading.	3.2.7
	3. Parts of red route where 'Red Route Bus Clearway' controls apply.	3.1.8		8. Parts of red route where exemptions apply to allow either loading and unloading or for parking vehicles which display a disabled persons badge in the relevant position.	3.2.9
	4. Parts of the red route where exemptions apply to allow parking.	3.2.1		9. Parts of red route where exemptions apply for parking buses	3.2.12

All times are inclusive

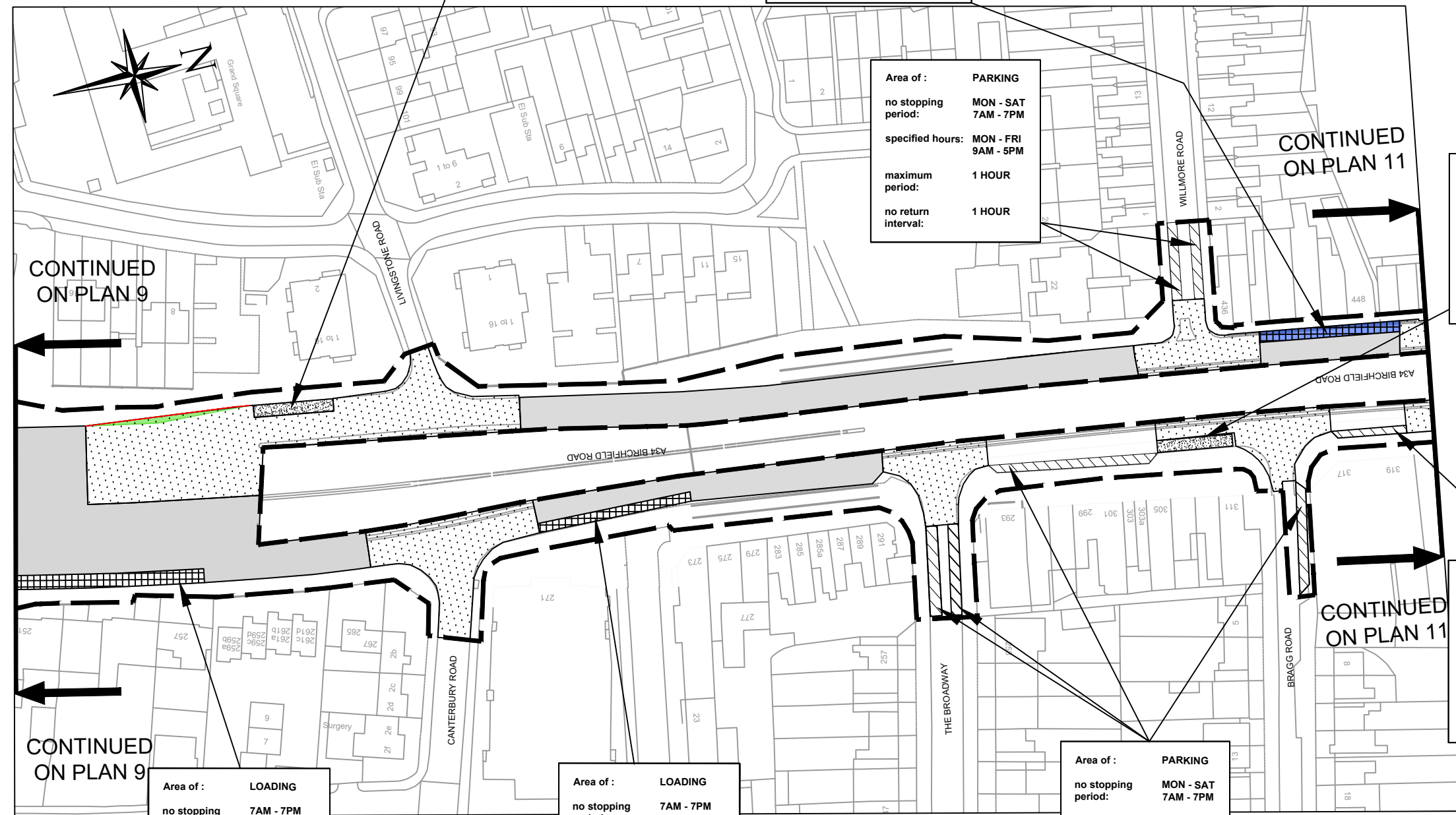
Area of : BUS CLEARWAY
 no stopping period: **AT ANY TIME**
 specified hours: **AT ANY TIME**
 maximum period: **N/A**
 no return interval: **N/A**

Area of : LOADING
 no stopping period: **7AM-7PM**
 specified hours: **MON - SAT 10AM - 4PM**
SUN 7AM - 7PM
 maximum period: **20 MINUTES**
 no return interval: **N/A**

Area of : PARKING
 no stopping period: **MON - SAT 7AM - 7PM**
 specified hours: **MON - FRI 9AM - 5PM**
 maximum period: **1 HOUR**
 no return interval: **1 HOUR**

Area of : BUS CLEARWAY
 no stopping period: **AT ANY TIME**
 specified hours: **AT ANY TIME**
 maximum period: **N/A**
 no return interval: **N/A**

- Proposed Kerb Line
- Existing kerb line
- Existing restrictions re-aligned to reflect new geometry of the highway
- Proposed restrictions shown highlighted blue (Drawing amendments required to reflect changes to national guidance, that do not impact upon kerbside restrictions, are not highlighted for clarity)
- Proposed restriction advertised between 29th June 2020 and 20th July 2020 shown highlighted green



Area of : LOADING
 no stopping period: **7AM - 7PM**
 specified hours: **MON - SAT 10AM - 7PM**
SUN 7AM - 7PM
 maximum period: **20 MINUTES**
 no return interval: **N/A**

Area of : LOADING
 no stopping period: **7AM - 7PM**
 specified hours: **MON - SAT 10AM - 7PM**
SUN 7AM - 7PM
 maximum period: **20 MINUTES**
 no return interval: **N/A**

Area of : PARKING
 no stopping period: **MON - SAT 7AM - 7PM**
 specified hours: **MON - SAT 7AM - 7PM**
 maximum period: **1 HOUR**
 no return interval: **1 HOUR**

Area of : PARKING
 no stopping period: **MON - SAT 7AM - 7PM**
 specified hours: **MON - SAT 7AM - 7PM**
 maximum period: **20 MINUTES**
 no return interval: **20 MINUTES**

DATE	REV.	REVISIONS	DRN	PM
02/07/21	C03	FOR ADVERTISING	RS	PE
02/07/21	P06	SPRINT RR TRO CHANGES	RS	PE
23/06/20	C02	FOR ADVERTISING	RS	PE
22/06/20	C01	FOR ADVERTISING	EGT	PE
10/06/20	P04	KEY AND COMMENTS CHANGES	EMF	PE
29/05/20	P03	SPRINT RR TRO CHANGES	RS	PE
04/03/20	P02	SPRINT RR TRO CHANGES	EGT	PE



SCHEME
WALSALL ROAD ETC BIRMINGHAM

DRAWING
BIRMINGHAM CITY COUNCIL
(WALSALL ROAD ETC BIRMINGHAM)
(RED ROUTE)
ORDER 202*
TRAFFIC REGULATION ORDER PLAN
PLAN NO. 10 OF 24

EFFECTIVE DATE:

DRAWN	DESIGNER	PM	REVISION
EMF	AEC	PE	C03

DRAWING STATUS
INFORMATION

DWG. No
60599248-ACM-2600-0000-DR-TR-001010

SCALE
1:1250

This map is based upon Ordnance Survey material with the permission of Ordnance Survey on behalf of the Controller of Her Majesty's Stationery Office Crown copyright. Unauthorised reproduction infringes Crown copyright and may lead to prosecution or civil proceedings. B.C.C. Licence No 100031673 Date 2020

C:\pwworking\aeocom_ds03_ukross.stratford@aecom.com\id128414\60599248-ACM-2600-0000-DR-TR-001013.dwg

KEY :-

shading type	meaning	relevant articles	shading type	meaning	relevant articles
	Boundary of area within which Red Route controls apply (restricted hours Monday to Saturday, 7am - 7pm)	3.1.1 3.1.2		5. Parts of red route where exemptions apply for parking solo motor cycles.	3.2.3
	1. Parts of red route where 'no stopping' controls apply between 7am - 7pm on any day.	3.1.6		6. Parts of red route where exemptions apply for parking vehicles which display a disabled persons badge in the relevant position.	3.2.5
	2. Parts of red route where 'no stopping' controls apply at any time.	3.1.7		7. Parts of red route where exemptions apply to allow loading and unloading.	3.2.7
	3. Parts of red route where 'Red Route Bus Clearway' controls apply.	3.1.8		8. Parts of red route where exemptions apply to allow either loading and unloading or for parking vehicles which display a disabled persons badge in the relevant position.	3.2.9
	4. Parts of the red route where exemptions apply to allow parking.	3.2.1		9. Parts of red route where exemptions apply for parking buses	3.2.12

All times are inclusive

- Proposed Kerb Line
- Existing kerb line
- Existing restrictions re-aligned to reflect new geometry of the highway
- Proposed restrictions shown highlighted blue (Drawing amendments required to reflect changes to national guidance, that do not impact upon kerbside restrictions, are not highlighted for clarity)
- Proposed restriction advertised between 29th June 2020 and 20th July 2020 shown highlighted green

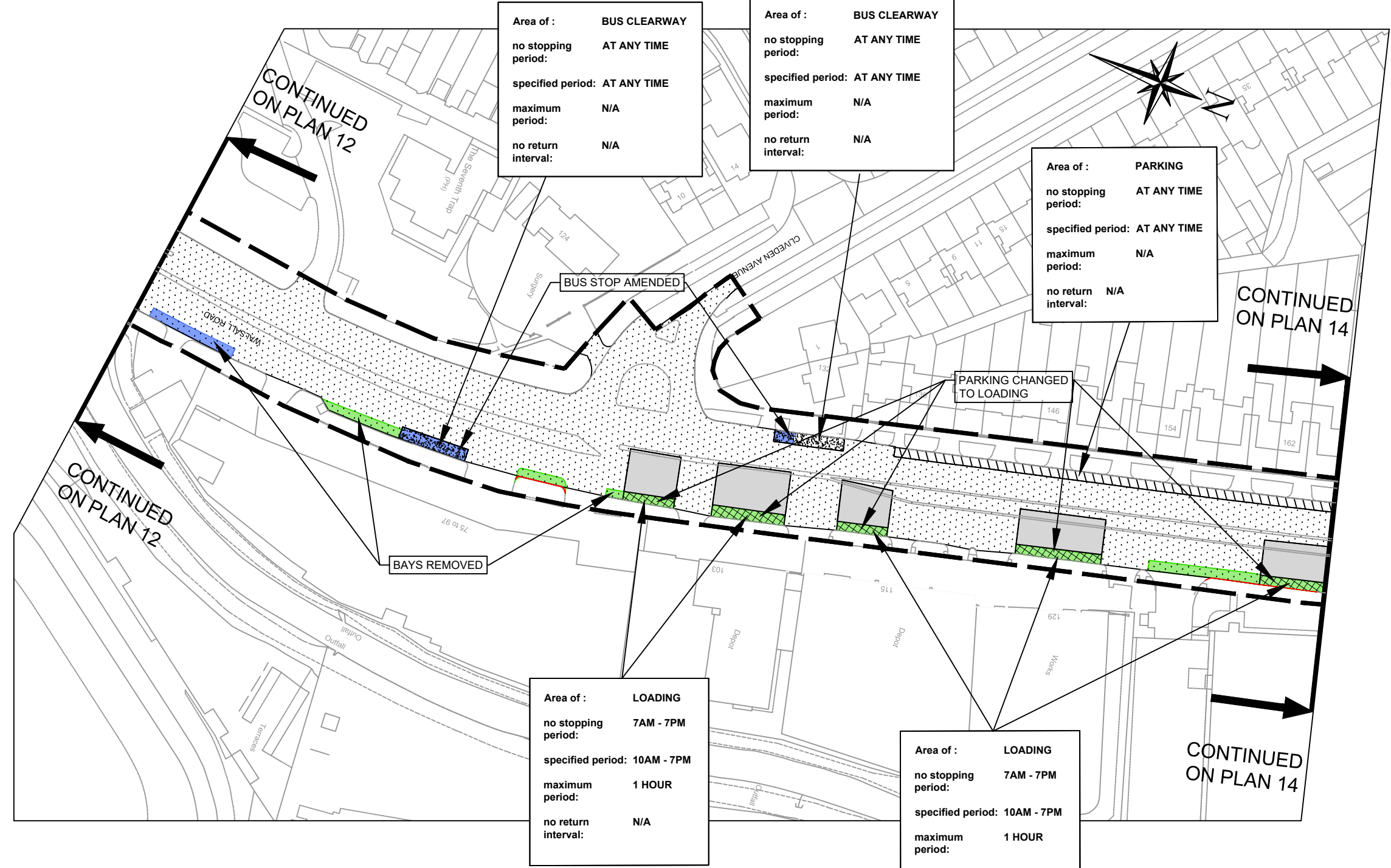
Area of : **BUS CLEARWAY**
 no stopping period: **AT ANY TIME**
 specified period: **AT ANY TIME**
 maximum period: **N/A**
 no return interval: **N/A**

Area of : **BUS CLEARWAY**
 no stopping period: **AT ANY TIME**
 specified period: **AT ANY TIME**
 maximum period: **N/A**
 no return interval: **N/A**

Area of : **PARKING**
 no stopping period: **AT ANY TIME**
 specified period: **AT ANY TIME**
 maximum period: **N/A**
 no return interval: **N/A**

Area of : **LOADING**
 no stopping period: **7AM - 7PM**
 specified period: **10AM - 7PM**
 maximum period: **1 HOUR**
 no return interval: **N/A**

Area of : **LOADING**
 no stopping period: **7AM - 7PM**
 specified period: **10AM - 7PM**
 maximum period: **1 HOUR**
 no return interval: **N/A**



02/07/21	C02	FOR ADVERTISING	RS	PE
09/03/21	P06	SPRINT RR TRO CHANGES	RS	PE
15/12/20	P05	SPRINT RR TRO CHANGES	RS	PE
22/06/20	C01	FOR ADVERTISING	EGT	PE
10/06/20	P04	KEY AND COMMENTS CHANGES	EMF	PE
29/05/20	P03	SPRINT RR TRO CHANGES	RS	PE
04/03/20	P02	SPRINT RR TRO CHANGES	EGT	PE
DATE	REV.	REVISIONS	DRN	PM



SCHEME
WALSALL ROAD ETC BIRMINGHAM

DRAWING
BIRMINGHAM CITY COUNCIL
(WALSALL ROAD ETC BIRMINGHAM)
(RED ROUTE)
ORDER 202*
TRAFFIC REGULATION ORDER PLAN
PLAN NO. 13 OF 24

EFFECTIVE DATE:

DRAWN	DESIGNER	PM	REVISION
EMF	AEC	PE	C02
DRAWING STATUS			SCALE
INFORMATION			1:1250
DWG. No			
60599248-ACM-2600-0000-DR-TR-001013			

This map is based upon Ordnance Survey material with the permission of Ordnance Survey on behalf of the Controller of Her Majesty's Stationery Office Crown copyright. Unauthorised reproduction infringes Crown copyright and may lead to prosecution or civil proceedings. B.C.C. Licence No 100031673 Date 2020

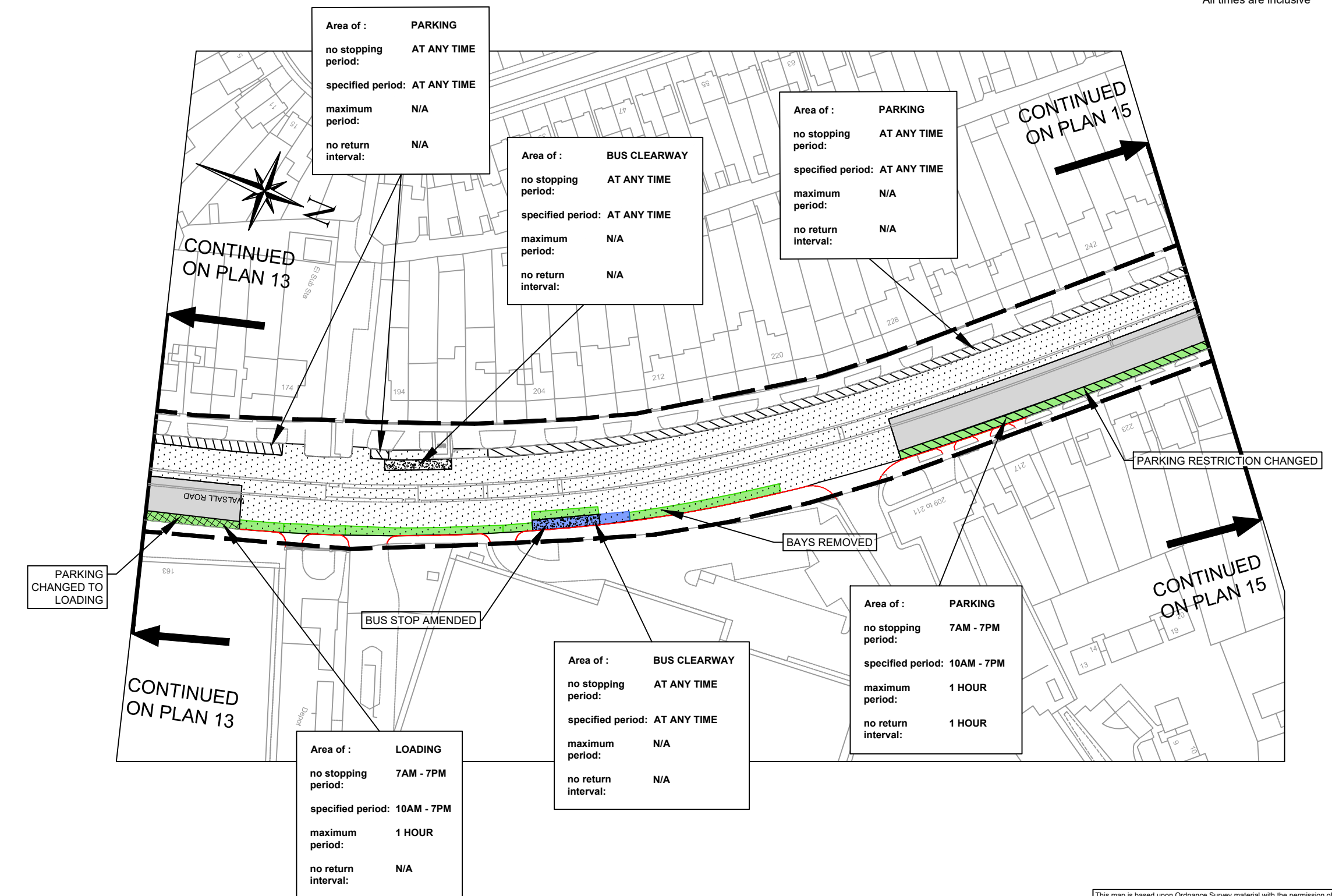
C:\pwworking\aeocom_ds03_ukross\stratford\aeocom.com\d0128414\60599248-ACM-2600-0000-DR-TR-001014.dwg

KEY :-

shading type	meaning	relevant articles	shading type	meaning	relevant articles
	Boundary of area within which Red Route controls apply (restricted hours Monday to Saturday, 7am - 7pm)	3.1.1 3.1.2		5. Parts of red route where exemptions apply for parking solo motor cycles.	3.2.3
	1. Parts of red route where 'no stopping' controls apply between 7am - 7pm on any day.	3.1.6		6. Parts of red route where exemptions apply for parking vehicles which display a disabled persons badge in the relevant position.	3.2.5
	2. Parts of red route where 'no stopping' controls apply at any time.	3.1.7		7. Parts of red route where exemptions apply to allow loading and unloading.	3.2.7
	3. Parts of red route where 'Red Route Bus Clearway' controls apply.	3.1.8		8. Parts of red route where exemptions apply to allow either loading and unloading or for parking vehicles which display a disabled persons badge in the relevant position.	3.2.9
	4. Parts of the red route where exemptions apply to allow parking.	3.2.1		9. Parts of red route where exemptions apply for parking buses	3.2.12

All times are inclusive

- Proposed Kerb Line
- Existing kerb line
- Existing restrictions re-aligned to reflect new geometry of the highway
- Proposed restrictions shown highlighted blue (Drawing amendments required to reflect changes to national guidance, that do not impact upon kerbside restrictions, are not highlighted for clarity)
- Proposed restriction advertised between 29th June 2020 and 20th July 2020 shown highlighted green



DATE	REV.	REVISIONS	DRN	PM
02/07/21	C02	FOR ADVERTISING	RS	PE
09/03/21	P06	SPRINT RR TRO CHANGES	RS	PE
15/12/20	P05	SPRINT RR TRO CHANGES	RS	PE
22/06/20	C01	FOR ADVERTISING	EGT	PE
10/06/20	P04	KEY AND COMMENTS CHANGES	EMF	PE
29/05/20	P03	SPRINT RR TRO CHANGES	RS	PE
04/03/20	P02	SPRINT RR TRO CHANGES	EGT	PE



SCHEME
WALSALL ROAD ETC BIRMINGHAM

DRAWING
BIRMINGHAM CITY COUNCIL
(WALSALL ROAD ETC BIRMINGHAM)
(RED ROUTE)
ORDER 202*
TRAFFIC REGULATION ORDER PLAN
PLAN NO. 14 OF 24

EFFECTIVE DATE:

DRAWN	DESIGNER	PM	REVISION
EMF	AEC	PE	C02

DRAWING STATUS
INFORMATION

DWG. No
60599248-ACM-2600-0000-DR-TR-001014

SCALE
1:1250

This map is based upon Ordnance Survey material with the permission of Ordnance Survey on behalf of the Controller of Her Majesty's Stationery Office Crown copyright. Unauthorised reproduction infringes Crown copyright and may lead to prosecution or civil proceedings. B.C.C. Licence No 100031673 Date 2020

C:\pwworking\aeocom_ds03_ukross.stratford@aeocom.com\d0128414\60599248-ACM-2600-0000-DR-TR-001015.dwg

KEY :-

shading type	meaning	relevant articles	shading type	meaning	relevant articles
	Boundary of area within which Red Route controls apply (restricted hours Monday to Saturday, 7am - 7pm)	3.1.1 3.1.2		5. Parts of red route where exemptions apply for parking solo motor cycles.	3.2.3
	1. Parts of red route where 'no stopping' controls apply between 7am - 7pm on any day.	3.1.6		6. Parts of red route where exemptions apply for parking vehicles which display a disabled persons badge in the relevant position.	3.2.5
	2. Parts of red route where 'no stopping' controls apply at any time.	3.1.7		7. Parts of red route where exemptions apply to allow loading and unloading.	3.2.7
	3. Parts of red route where 'Red Route Bus Clearway' controls apply.	3.1.8		8. Parts of red route where exemptions apply to allow either loading and unloading or for parking vehicles which display a disabled persons badge in the relevant position.	3.2.9
	4. Parts of the red route where exemptions apply to allow parking.	3.2.1		9. Parts of red route where exemptions apply for parking buses	3.2.12

All times are inclusive

- Proposed Kerb Line
- Existing kerb line
- Existing restrictions re-aligned to reflect new geometry of the highway
- Proposed restrictions shown highlighted blue (Drawing amendments required to reflect changes to national guidance, that do not impact upon kerbside restrictions, are not highlighted for clarity)
- Proposed restriction advertised between 29th June 2020 and 20th July 2020 shown highlighted green

DATE	REV.	REVISIONS	DRN	PM
02/07/21	C02	FOR ADVERTISING	RS	PE
17/06/21	P08	SPRINT RR TRO CHANGES	RS	PE
14/05/21	P07	SPRINT RR TRO CHANGES	RS	PE
09/03/21	P06	SPRINT RR TRO CHANGES	RS	PE
15/12/20	P05	SPRINT RR TRO CHANGES	RS	PE
22/06/20	C01	FOR ADVERTISING	EGT	PE
10/06/20	P04	KEY AND COMMENTS CHANGES	EMF	PE

Birmingham City Council

SCHEME
WALSALL ROAD ETC BIRMINGHAM

DRAWING
BIRMINGHAM CITY COUNCIL
(WALSALL ROAD ETC BIRMINGHAM)
(RED ROUTE)
ORDER 202*
TRAFFIC REGULATION ORDER PLAN
PLAN NO. 15 OF 24

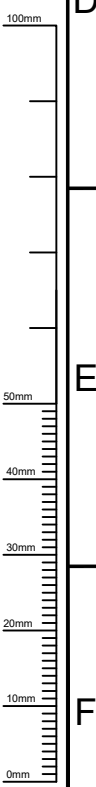
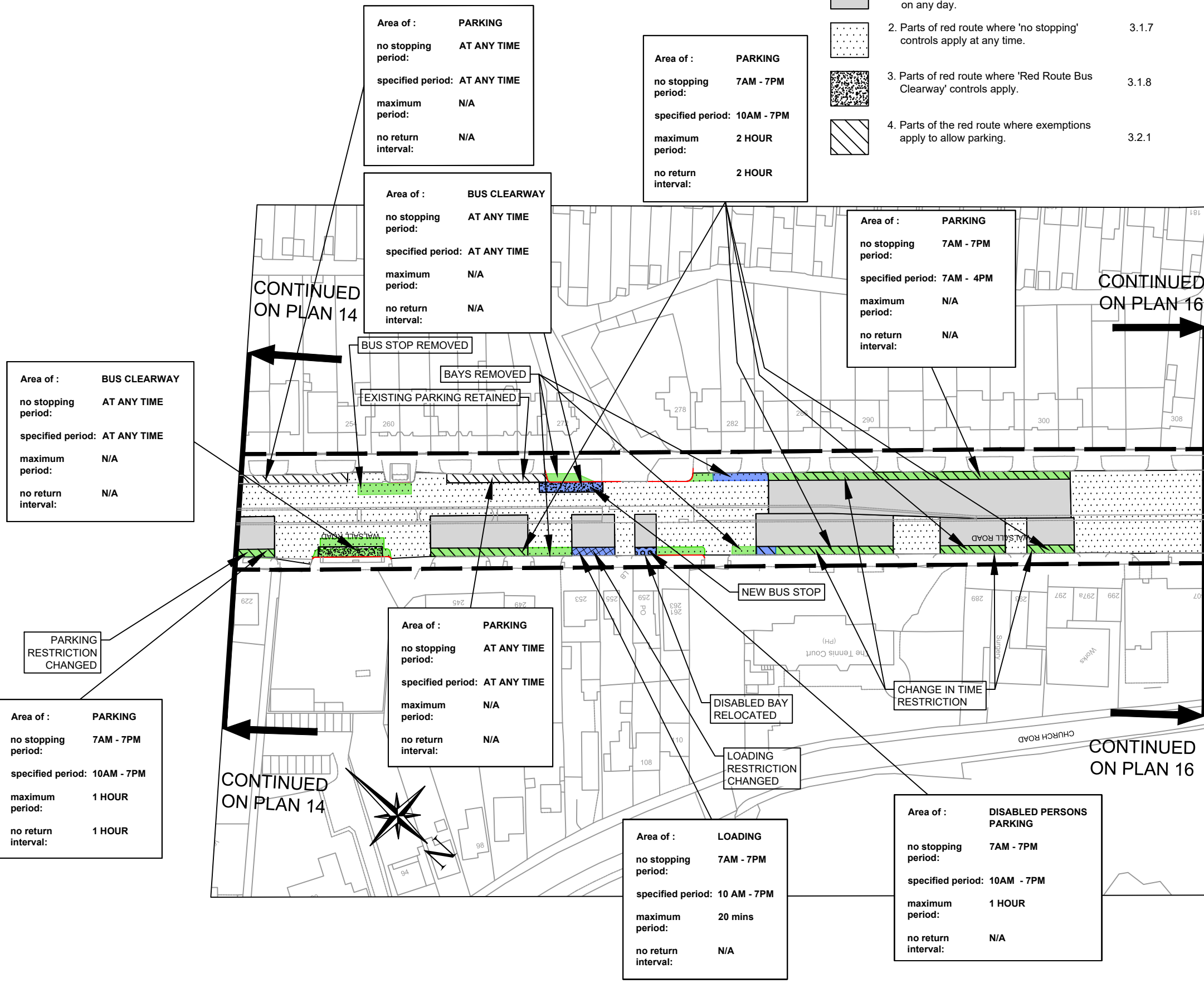
EFFECTIVE DATE:

DRAWN	DESIGNER	PM	REVISION
EMF	AEC	PE	C02

DRAWING STATUS
INFORMATION

DWG. No
60599248-ACM-2600-0000-DR-TR-001015

SCALE
1:1250



This map is based upon Ordnance Survey material with the permission of Ordnance Survey on behalf of the Controller of Her Majesty's Stationery Office Crown copyright. Unauthorised reproduction infringes Crown copyright and may lead to prosecution or civil proceedings. B.C.C. Licence No 100031673 Date 2020

C:\pwworking\aeocom_ds03_uk\ross.stratford@aeocom.com\d0128414\60599248-ACM-2600-0000-DR-TR-001020.dwg

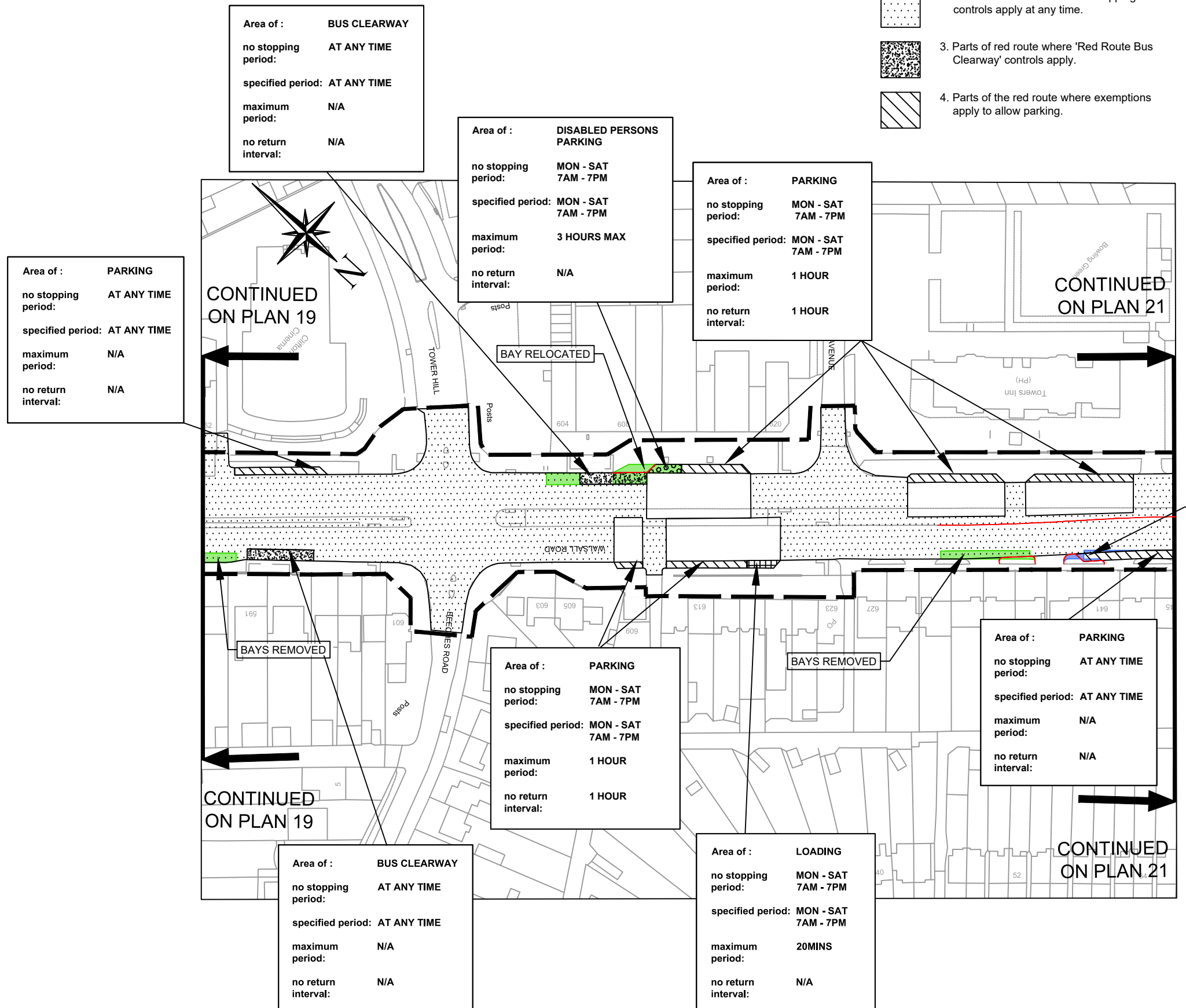


KEY :-

shading type	meaning	relevant articles	shading type	meaning	relevant articles
	Boundary of area within which Red Route controls apply (restricted hours Monday to Saturday, 7am - 7pm)	3.1.1 3.1.2		5. Parts of red route where exemptions apply for parking solo motor cycles.	3.2.3
	1. Parts of red route where 'no stopping' controls apply between 7am - 7pm on any day.	3.1.6		6. Parts of red route where exemptions apply for parking vehicles which display a disabled persons badge in the relevant position.	3.2.5
	2. Parts of red route where 'no stopping' controls apply at any time.	3.1.7		7. Parts of red route where exemptions apply to allow loading and unloading.	3.2.7
	3. Parts of red route where 'Red Route Bus Clearway' controls apply.	3.1.8		8. Parts of red route where exemptions apply to allow either loading and unloading or for parking vehicles which display a disabled persons badge in the relevant position.	3.2.9
	4. Parts of the red route where exemptions apply to allow parking.	3.2.1		9. Parts of red route where exemptions apply for parking buses	3.2.12

All times are inclusive

- Proposed Kerb Line
- Existing kerb line
- Existing restrictions re-aligned to reflect new geometry of the highway
- Proposed restrictions shown highlighted blue (Drawing amendments required to reflect changes to national guidance, that do not impact upon kerbside restrictions, are not highlighted for clarity)
- Proposed restriction advertised between 29th June 2020 and 20th July 2020 shown highlighted green



Area of : **PARKING**
 no stopping period: **AT ANY TIME**
 specified period: **AT ANY TIME**
 maximum period: **N/A**
 no return interval: **N/A**

Area of : **BUS CLEARWAY**
 no stopping period: **AT ANY TIME**
 specified period: **AT ANY TIME**
 maximum period: **N/A**
 no return interval: **N/A**

Area of : **DISABLED PERSONS PARKING**
 no stopping period: **MON - SAT 7AM - 7PM**
 specified period: **MON - SAT 7AM - 7PM**
 maximum period: **3 HOURS MAX**
 no return interval: **N/A**

Area of : **PARKING**
 no stopping period: **MON - SAT 7AM - 7PM**
 specified period: **MON - SAT 7AM - 7PM**
 maximum period: **1 HOUR**
 no return interval: **1 HOUR**

Area of : **PARKING**
 no stopping period: **MON - SAT 7AM - 7PM**
 specified period: **MON - SAT 7AM - 7PM**
 maximum period: **1 HOUR**
 no return interval: **1 HOUR**

Area of : **PARKING**
 no stopping period: **AT ANY TIME**
 specified period: **AT ANY TIME**
 maximum period: **N/A**
 no return interval: **N/A**

Area of : **BUS CLEARWAY**
 no stopping period: **AT ANY TIME**
 specified period: **AT ANY TIME**
 maximum period: **N/A**
 no return interval: **N/A**

Area of : **LOADING**
 no stopping period: **MON - SAT 7AM - 7PM**
 specified period: **MON - SAT 7AM - 7PM**
 maximum period: **20MINS**
 no return interval: **N/A**

DATE	REV.	REVISIONS	DRN	PM
02/07/21	C02	FOR ADVERTISING	RS	PE
14/05/21	P07	SPRINT RR TRO CHANGES	RS	PE
09/03/21	P06	SPRINT RR TRO CHANGES	RS	PE
15/12/20	P05	SPRINT RR TRO CHANGES	RS	PE
22/06/20	C01	FOR ADVERTISING	EGT	PE
10/06/20	P04	KEY AND COMMENTS CHANGES	EMF	PE
29/05/20	P03	SPRINT RR TRO CHANGES	RS	PE

Birmingham City Council

SCHEME
WALSALL ROAD ETC BIRMINGHAM

DRAWING
BIRMINGHAM CITY COUNCIL
(WALSALL ROAD ETC BIRMINGHAM)
(RED ROUTE)
ORDER 202*
TRAFFIC REGULATION ORDER PLAN
PLAN NO. 20 OF 24

EFFECTIVE DATE:

DRAWN	DESIGNER	PM	REVISION
EMF	AEC	PE	C02

DRAWING STATUS
INFORMATION

DWG. No
60599248-ACM-2600-0000-DR-TR-001020

SCALE
1:1250

This map is based upon Ordnance Survey material with the permission of Ordnance Survey on behalf of the Controller of Her Majesty's Stationery Office Crown copyright. Unauthorised reproduction infringes Crown copyright and may lead to prosecution or civil proceedings. B.C.C. Licence No 100031673 Date 2020