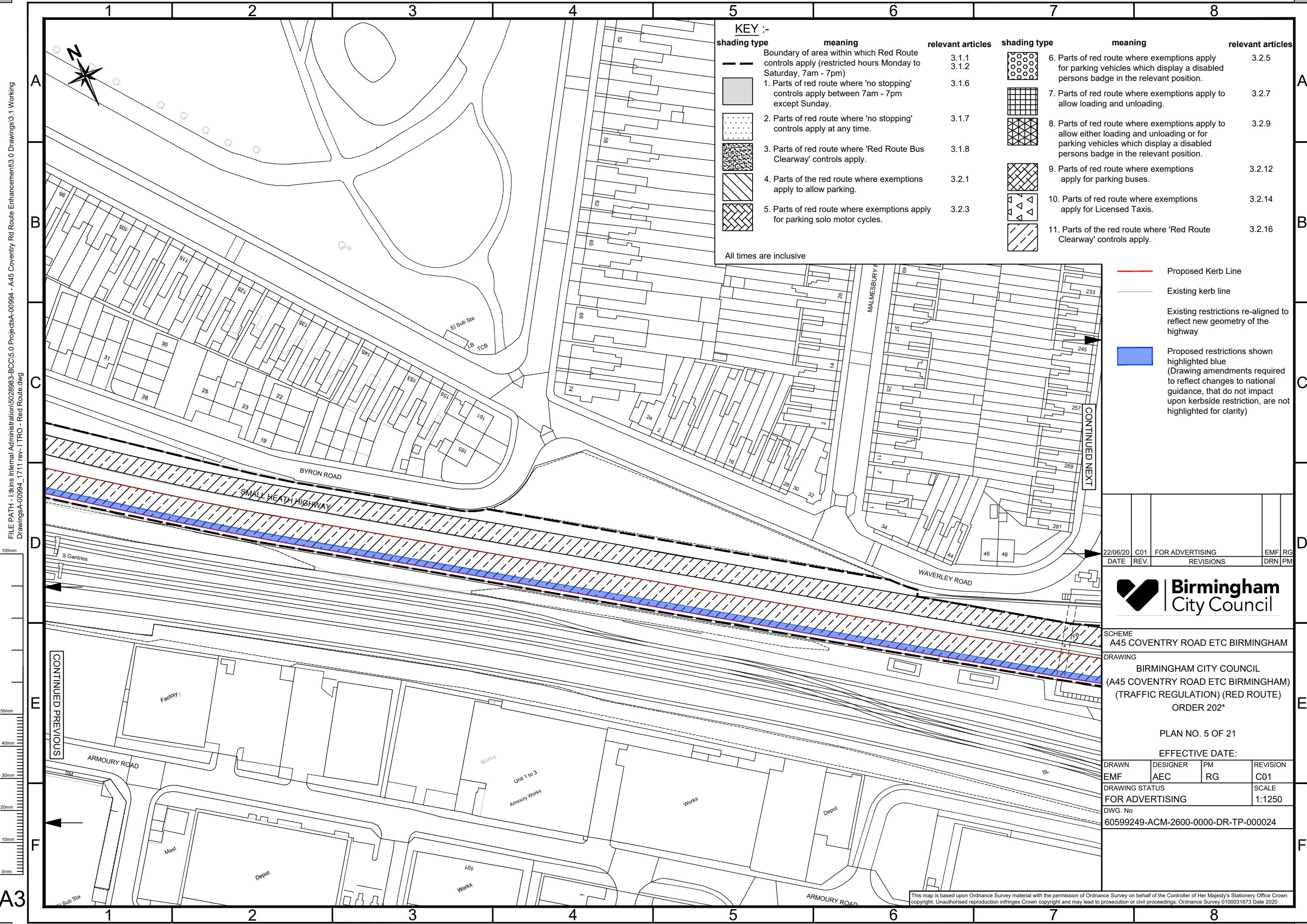


FILE PATH - I:\kins Internal Administration\5028983-BCC\5.0 Projects\A-00994 - A45 Coventry Rd Route Enhancement\3.0 Drawings\3.1 Working Drawings\A-00994\_1711 rev.1 TRO - Red Route.dwg

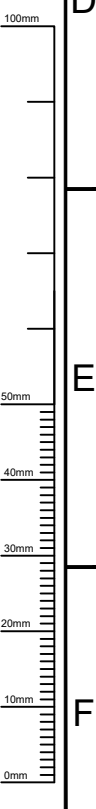


**KEY :-**

shading type	meaning	relevant articles	shading type	meaning	relevant articles
	Boundary of area within which Red Route controls apply (restricted hours Monday to Saturday, 7am - 7pm)	3.1.1 3.1.2		6. Parts of red route where exemptions apply for parking vehicles which display a disabled persons badge in the relevant position.	3.2.5
	1. Parts of red route where 'no stopping' controls apply between 7am - 7pm except Sunday.	3.1.6		7. Parts of red route where exemptions apply to allow loading and unloading.	3.2.7
	2. Parts of red route where 'no stopping' controls apply at any time.	3.1.7		8. Parts of red route where exemptions apply to allow either loading and unloading or for parking vehicles which display a disabled persons badge in the relevant position.	3.2.9
	3. Parts of red route where 'Red Route Bus Clearway' controls apply.	3.1.8		9. Parts of red route where exemptions apply for parking buses.	3.2.12
	4. Parts of the red route where exemptions apply to allow parking.	3.2.1		10. Parts of red route where exemptions apply for Licensed Taxis.	3.2.14
	5. Parts of red route where exemptions apply for parking solo motor cycles.	3.2.3		11. Parts of the red route where 'Red Route Clearway' controls apply.	3.2.16

All times are inclusive

- Proposed Kerb Line
- Existing kerb line
- Existing restrictions re-aligned to reflect new geometry of the highway
- Proposed restrictions shown highlighted blue (Drawing amendments required to reflect changes to national guidance, that do not impact upon kerbside restriction, are not highlighted for clarity)



22/06/20	C01	FOR ADVERTISING	EMF	RG
DATE	REV.	REVISIONS	DRN	PM



SCHEME  
A45 COVENTRY ROAD ETC BIRMINGHAM

DRAWING  
BIRMINGHAM CITY COUNCIL  
(A45 COVENTRY ROAD ETC BIRMINGHAM)  
(TRAFFIC REGULATION) (RED ROUTE)  
ORDER 202\*

PLAN NO. 5 OF 21

EFFECTIVE DATE:

DRAWN	DESIGNER	PM	REVISION
EMF	AEC	RG	C01

DRAWING STATUS  
FOR ADVERTISING  
SCALE  
1:1250

DWG. No  
60599249-ACM-2600-0000-DR-TP-000024

This map is based upon Ordnance Survey material with the permission of Ordnance Survey on behalf of the Controller of Her Majesty's Stationery Office Crown copyright. Unauthorised reproduction infringes Crown copyright and may lead to prosecution or civil proceedings. Ordnance Survey 0100031673 Date 2020