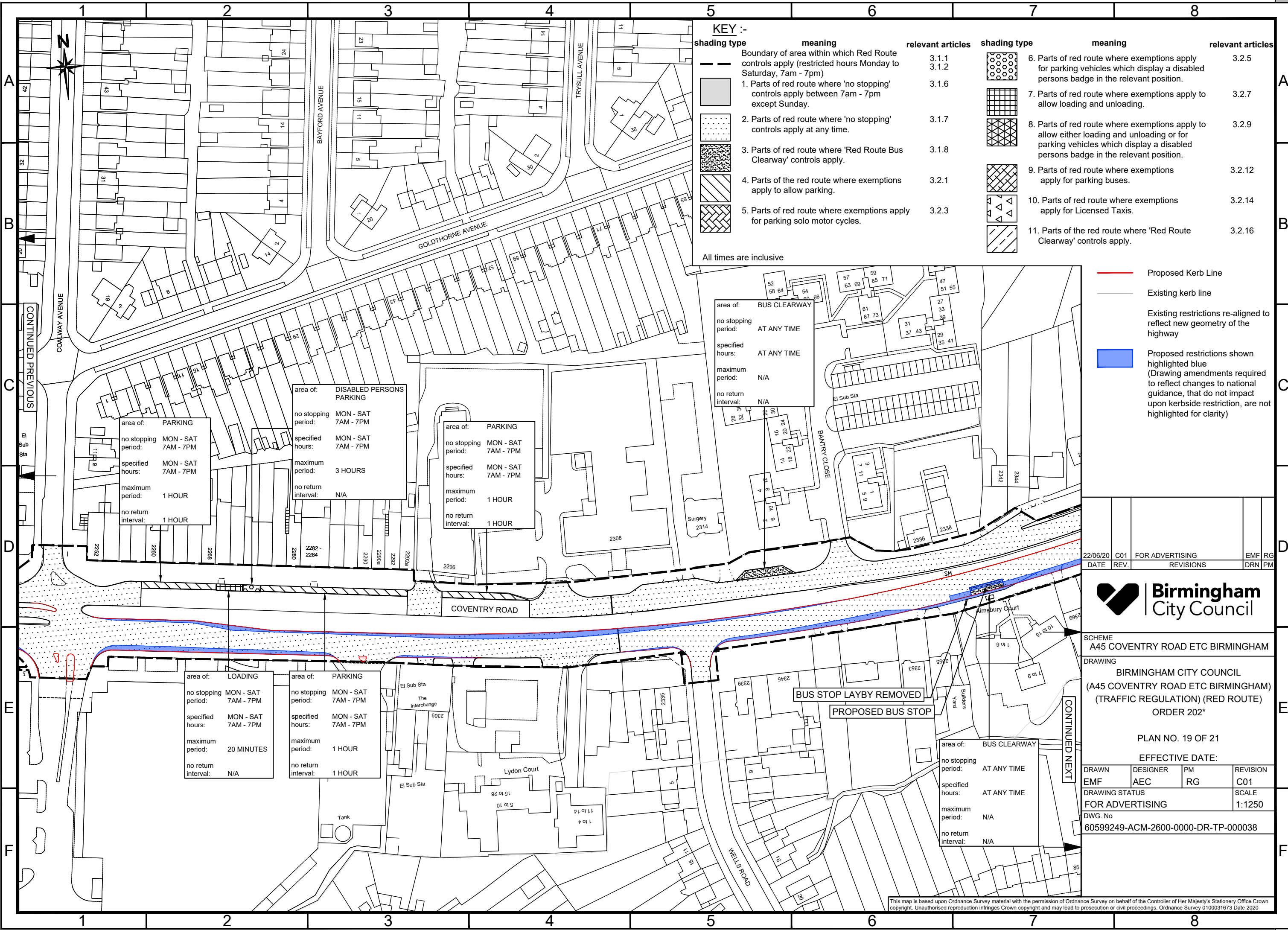
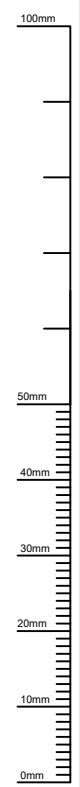


FILE PATH - I:\kins Internal Administration\5028983-BCC\5.0 Projects\Coventry Rd Route Enhancement\3.0 Drawings\3.1 Working Drawings\A-08994_1711 rev.1 TRO - Red Route.dwg



KEY :-

shading type	meaning	relevant articles	shading type	meaning	relevant articles
	Boundary of area within which Red Route controls apply (restricted hours Monday to Saturday, 7am - 7pm)	3.1.1 3.1.2		6. Parts of red route where exemptions apply for parking vehicles which display a disabled persons badge in the relevant position.	3.2.5
	1. Parts of red route where 'no stopping' controls apply between 7am - 7pm except Sunday.	3.1.6		7. Parts of red route where exemptions apply to allow loading and unloading.	3.2.7
	2. Parts of red route where 'no stopping' controls apply at any time.	3.1.7		8. Parts of red route where exemptions apply to allow either loading and unloading or for parking vehicles which display a disabled persons badge in the relevant position.	3.2.9
	3. Parts of red route where 'Red Route Bus Clearway' controls apply.	3.1.8		9. Parts of red route where exemptions apply for parking buses.	3.2.12
	4. Parts of the red route where exemptions apply to allow parking.	3.2.1		10. Parts of red route where exemptions apply for Licensed Taxis.	3.2.14
	5. Parts of red route where exemptions apply for parking solo motor cycles.	3.2.3		11. Parts of the red route where 'Red Route Clearway' controls apply.	3.2.16

All times are inclusive

	Proposed Kerb Line
	Existing kerb line
	Proposed restrictions shown highlighted blue (Drawing amendments required to reflect changes to national guidance, that do not impact upon kerbside restriction, are not highlighted for clarity)

area of: **PARKING**
 no stopping period: MON - SAT 7AM - 7PM
 specified hours: MON - SAT 7AM - 7PM
 maximum period: 1 HOUR
 no return interval: 1 HOUR

area of: **DISABLED PERSONS PARKING**
 no stopping period: MON - SAT 7AM - 7PM
 specified hours: MON - SAT 7AM - 7PM
 maximum period: 3 HOURS
 no return interval: N/A

area of: **PARKING**
 no stopping period: MON - SAT 7AM - 7PM
 specified hours: MON - SAT 7AM - 7PM
 maximum period: 1 HOUR
 no return interval: 1 HOUR

area of: **BUS CLEARWAY**
 no stopping period: AT ANY TIME
 specified hours: AT ANY TIME
 maximum period: N/A
 no return interval: N/A

area of: **LOADING**
 no stopping period: MON - SAT 7AM - 7PM
 specified hours: MON - SAT 7AM - 7PM
 maximum period: 20 MINUTES
 no return interval: N/A

area of: **PARKING**
 no stopping period: MON - SAT 7AM - 7PM
 specified hours: MON - SAT 7AM - 7PM
 maximum period: 1 HOUR
 no return interval: 1 HOUR

area of: **BUS CLEARWAY**
 no stopping period: AT ANY TIME
 specified hours: AT ANY TIME
 maximum period: N/A
 no return interval: N/A

22/06/20	C01	FOR ADVERTISING	EMF	RG
DATE	REV.	REVISIONS	DRN	PM



SCHEME
A45 COVENTRY ROAD ETC BIRMINGHAM
 DRAWING
 BIRMINGHAM CITY COUNCIL
 (A45 COVENTRY ROAD ETC BIRMINGHAM)
 (TRAFFIC REGULATION) (RED ROUTE)
 ORDER 202*

PLAN NO. 19 OF 21
 EFFECTIVE DATE:

DRAWN	DESIGNER	PM	REVISION
EMF	AEC	RG	C01
DRAWING STATUS			SCALE
FOR ADVERTISING			1:1250
DWG. No			
60599249-ACM-2600-0000-DR-TP-000038			

This map is based upon Ordnance Survey material with the permission of Ordnance Survey on behalf of the Controller of Her Majesty's Stationery Office Crown copyright. Unauthorised reproduction infringes Crown copyright and may lead to prosecution or civil proceedings. Ordnance Survey 0100031673 Date 2020