

Birmingham's Strategy for SEND & Inclusion

Easy Read Consultation Document



9th June – 31st July 2017

Please complete & submit by

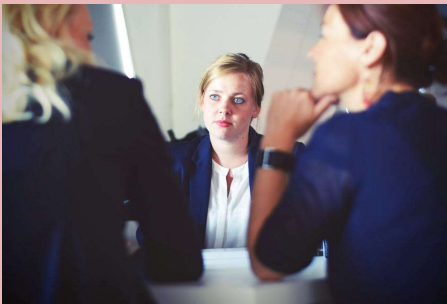


Need help? Call: 0121 303 5154 or Email: education@birmingham.gov.uk

INTRODUCTION

 What are we consulting on?

Why do we need you to answer these questions?



We want to tell you about:

Birmingham's Strategy for:

Special Educational Needs and/or Disabilities (SEND)



Inclusion

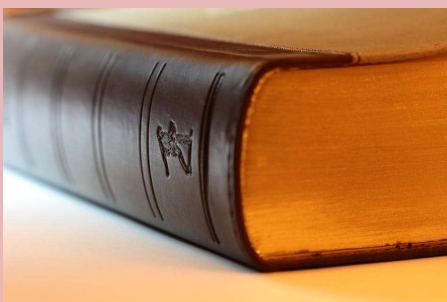
Our Vision

Mission



Objectives

Priorities and plans so far.



The Law (Section 30 of the Children and Families Act 2014) says we must keep our Local Offer under review.

Your consultation responses (where appropriate) will be fed into this ongoing review.

How We Consult.



We will be asking for your views on our ideas for children, young people and families who use SEND services, parents, carers, city council staff, health partners, schools and other settings.



We will be working with a wide group of stakeholders from education, health, social care and professional forums.

Stakeholders are people who have an interest in something and wish to make it a success.



We will work with stakeholders in schools, settings, providers and other professional bodies.

We will agree the best way to get the views of families of children and young people.

You can tell us your views by:



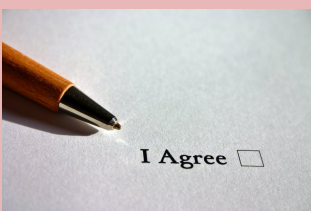
Completing a questionnaire, Attending consultation meetings or by emailing or telephoning us.

We will listen to and record your comments



We will publish an anonymous summary of comments received. We will explain what we plan to do next. It will be made available and will show where we have made changes. If we don't make changes, we will say why.

When the consultation closes, we will prepare a report for the Inclusion Commission. It tells them what we have found out. A final report is sent to Cabinet showing our strategy and plan for carrying it out.



The Inclusion Commission reviews SEND services in Birmingham including key stakeholders. The Cabinet is responsible for decisions on Council services.



Who will be affected by the results of this consultation?

- ➔ Children and young people who have special educational needs and/or a disability (SEND)
- ➔ Parents, carers and families of children and young people who have SEND
- ➔ Birmingham City Council education and social care staff
- ➔ Health organisations in Birmingham (including NHS trusts and Clinical Commissioning Groups) and their staff involved in development of Education Health & Care Plans
- ➔ All Birmingham schools, including Governing bodies, Head Teachers, SENCOs (Special Educational Needs Coordinator)
- ➔ Children's centres
- ➔ Early Years settings and providers
- ➔ Post 16 & 19 settings and providers
- ➔ Private, third sector and voluntary providers of services for children and young people who have SEND
- ➔ Youth offending teams



Birmingham's Review of SEND Services

Following the introduction of the Children and Families Act in 2014 and the Special Educational Needs & Disability Code of Practice in 2015, a number of changes were introduced to the way services for children and young people with special educational needs are delivered in Birmingham.

Implementing these changes in Birmingham has been very challenging and systems have been under pressure to meet deadlines within a tight budget.

Birmingham City Council started a full review of all SEND services in 2016 because they wanted to improve the approach to Inclusion in education, health and social care services for children and young people. They called this the Inclusion Commission.

This work included key people from education, health, social care and also parents, young people and elected members and officers Birmingham City Council. It was all overseen by an independent Chair, Professor Geoff Lindsay from Warwick University.

It was agreed there is a need for shared responsibility between the Inclusion Commission, Health, Social Care and Education to deliver improvements to the services.

A joint Vision and Mission has been developed with the members of the Inclusion Commission to help describe where we want to get to, and how we will get there.

We have set out four Objectives to describe what we want to achieve

From this, we will focus on three key Priority areas in order to improve the services available.

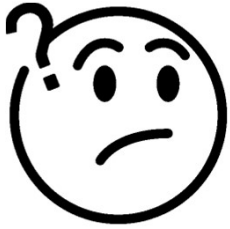
We would like to hear your feedback on our proposals so far to help us develop our plans further



(A) What is your interest in this consultation?

Are you a: (tick as many that apply)

Child, young person or adult up to 25 years, with a special educational need and/or disability.	
Parent or carer of a child or young person with a special educational need and/or disability.	
Birmingham City Council employee (non schools)	
Councillor or MP	
Health service (e.g. NHS or Clinical Commissioning Group)	
Teacher or schools staff	
School Governor	
Early years provider	
Post-16 education provider	
Post-19 education provider	
Private or voluntary provider	
A member of the public	
Other – Please Specify:	



(B) If you are a 'Child or Young Person with a special educational need or disability' in Question 'A' (See page 6), what is your age?

0-4 years

5-10 years

11-15 years

16-18 years

19-25 years

N/A



(C) If you are a 'Parent or Carer' in Question 'A' (see page 6), what age range are the children in your family?

0-4 years

5-10 years

11-15 years

16-18 years

19-25 years

N/A



(D) If you are a child, young person or parent, what types of special education needs and / or disabilities apply to you or your family? (Tick as many as apply)

Specific Learning Difficulty	
Cognition & Learning Difficulty	
Profound & Multiple Learning Difficulty	
Social, Emotional and Mental Health	
Speech, Language & Communication Needs	
Hearing Impairment	
Visual Impairment	
Multi-Sensory Impairment	
Physical Disability	
Autistic Spectrum Condition	
Other Difficulty/Disability (Please describe below):	

Section 1 – Our Proposals

Our Vision – Happy and Healthy

Every child and young person aged 0-25 with a special educational need and/or disability (SEND) in Birmingham will have the opportunity to be happy, healthy and achieve their fullest potential, enabling them to participate in, and contribute to all aspects of life.

1a. Do you support our proposed Vision for Birmingham?



Strongly Agree



Agree



Neutral



Disagree



Strongly disagree

1b. Please explain why you feel this way:

Our Mission

To implement an efficient and inclusive system where practitioners work with families, children and young people aged 0-25, to develop trust and confidence in order to build genuine and good quality partnerships. This will be achieved by practitioners from all sectors working together collaboratively to deliver the most appropriate local provision and support.

2a. Do you support our proposed Mission for Birmingham?



Strongly Agree



Agree



Neutral



Disagree



Strongly disagree

1b. Please explain why you feel this way:

Our Objectives

We have agreed four objectives which outline what we want to achieve.

We will develop joint commissioning to ensure resources are used fairly and effectively to provide maximum impact on outcomes.

This means education, health and social care working together and pooling their money to ensure best value and outcomes for children, young people and families

3a. Do you agree or disagree with this objective?



Strongly Agree



Agree



Neutral



Disagree



Strongly disagree

3b. Please explain why you feel this way:

3c. How will this affect you?

We will provide services that ensure the needs of children and young people who have special educational needs and disabilities and their families are at the heart of all that we do. We aim to offer this as locally as possible.

This means we will talk to you and involve you in planning and decision making.

4a. Do you agree or disagree with this objective?



Strongly Agree



Agree



Neutral



Disagree



Strongly disagree

4b. Please explain why you feel this way:

4c. How will this affect you?

It is our aim that all Birmingham mainstream provision will be welcoming, accessible and inclusive, adhering to the SEND Code of Practice, so that they can meet the needs of most children and young people aged 0-25 who have special educational needs and/or disabilities.

This means you can expect your mainstream local school or setting to make every reasonable adjustment to meet the needs of your children or young people.

5a. Do you agree or disagree with this objective?



Strongly Agree



Agree



Neutral



Disagree



Strongly disagree

5b. Please explain why you feel this way:

5c. How will this affect you?

We will develop flexible pathways to enable children and young people to access the right provision and services to meet their individual needs different stages. This will deliver the best possible outcomes, including education, employment and training, as young people move into adulthood.

This means we will regularly review the type of provision that can best meet the needs of a child or young person and work with you to agree the best placement throughout the child or young person's education.

6a. Do you agree or disagree with this objective?



Strongly Agree



Agree



Neutral



Disagree



Strongly disagree

6b. Please explain why you feel this way:

6c. How will this affect you?

Our Priorities

Priority 1:

Develop a framework of SEND assessment and planning from 0-25 years to enable professionals and partners to meet the full range of individual need and raise achievement

This means you can expect teachers and professionals to plan and effectively meet your child's special educational needs, including accessing extra funding, without always needing an Education Health and Care Plan.

7a. Do you agree or disagree with this objective?



Strongly Agree



Agree



Neutral



Disagree



Strongly disagree

7b. Please explain why you feel this way:

7c. How will this affect you?

Priority 2:

Ensure there is a sufficient and appropriate range of quality provision to meet the needs of children and young people who have special educational needs and/or disabilities aged 0-25 years and improve outcomes from early years to adulthood.

This means we will ensure there are enough good placements available in Birmingham for children and young people of all ages 0-25 to meet all levels of need.

8a. Do you agree or disagree with this objective?



Strongly Agree



Agree



Neutral



Disagree



Strongly disagree

8b. Please explain why you feel this way:

8c. How will this affect you?

Priority 3:

Develop a unified resource allocation system to distribute the range of SEND funding across all schools and settings in order to make the most effective use of available resources and maximise the impact on outcomes for young people

This means we will develop a system to give funding to schools and settings, based on individual needs of children and young people, and make sure we can clearly see the difference the money has made.

9a. Do you agree or disagree with this objective?



Strongly Agree



Agree



Neutral



Disagree



Strongly disagree

9b. Please explain why you feel this way:

9c. How will this affect you?



10. Do you have any comments on any part of our draft strategy and plans, or any ideas for making SEND services better?

About You



We would like you to tell us some things about you.

You do not have to tell us if you do not want to.

But if you do, it will help us to plan our services

How old are you?

<input type="checkbox"/>	0-4
<input type="checkbox"/>	5-9
<input type="checkbox"/>	10-14
<input type="checkbox"/>	15-17
<input type="checkbox"/>	18-19
<input type="checkbox"/>	20-24
<input type="checkbox"/>	25-29
<input type="checkbox"/>	30-34
<input type="checkbox"/>	35-39
<input type="checkbox"/>	40-44
<input type="checkbox"/>	45-49
<input type="checkbox"/>	50-54
<input type="checkbox"/>	55-59
<input type="checkbox"/>	60-64
<input type="checkbox"/>	65-69
<input type="checkbox"/>	70-74
<input type="checkbox"/>	75-79
<input type="checkbox"/>	80-84
<input type="checkbox"/>	85+

I am:



Male

Female

Do you have any physical, mental health or illnesses that are expected to last longer than 12 months?

Yes

No

No Response



<input type="checkbox"/>
<input type="checkbox"/>
<input type="checkbox"/>



The answers to these questions are used to check that we are getting views from different groups of people.



Do you have any of the following conditions or illnesses that affect you with?

- Vision (Blindness / Partial Sight)
- Hearing (Deafness / Partial Hearing)
- Mobility (Walking / Climbing Stairs)
- Dexterity (Lifting / Opening tins / Gripping)
- Learning / Understanding / Concentrating
- Memory
- Mental Health
- Stamina / Breathing /Fatigue.
- Socially / Behaviourally (Autism, Asperger's, Attention Deficit Disorder)
- Other:

Please tick your ethnic background:			
White			
English / Welsh / Scottish / Northern Irish/ British		Irish	
Gypsy / Irish Traveller		Polish	
Baltic States		Jewish	
Other White European		Any other White Background	
Mixed / Multiple Ethnic Groups			
White and Black Caribbean/African		Irish	
Any other mixed background			
Asian / Asian British			
Afghani		Bangladeshi	
British Asian		Chinese	
Filipino		Indian Sikh	
Indian Other		Kashmiri	
Pakistani		Sri Lankan	
Vietnamese		Any other Asian background	
Black African / Caribbean / Black British			
African		Black British	
Caribbean		Somali	
Any other Black/African/Caribbean background			
Other Ethnic Group			
Arab		Iranian	
Kurdish		Yemeni	
Any Other Ethnic Group: _____			



What is your sexual orientation?

- Heterosexual or Straight
- Gay or Lesbian
- Bisexual
- Prefer not to say
- Other (Please specify) _____



What is your religion or belief?

No religion

Christian (including Church of England, Catholic, Protestant and all other Christian denominations)

Buddhist

Hindu

Jewish

Muslim

Sikh

Any other religion (please specify below)

Prefer not to say

Thank you

for completing
this questionnaire.

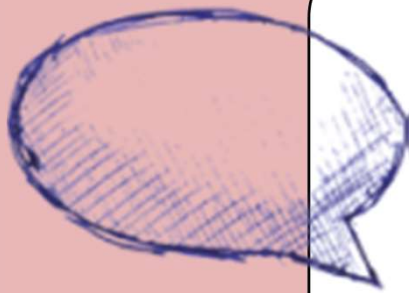
Where can I
return my
completed paper
questionnaire?



Please post it to us at:
Birmingham's Strategy
for SEND and Inclusion
PO Box 16465
Birmingham
B2 2DG

Completing an online version of the
questionnaire:

[https://www.birminghambeheard.org
.uk/people-1/send-inclusion](https://www.birminghambeheard.org.uk/people-1/send-inclusion)



Section 2 - Have your say.

There are lots of ways to find out more and to give us your views.

You can do this by:

You can complete an **online** version of the questionnaire and download copies of the consultation document **from 9th June 2017** at:

<https://www.birminghambeheard.org.uk/people-1/send-inclusion>

If you require a **paper copy** or a more accessible format such as an **Easy Read version**, please use the contact details at the bottom of the page.

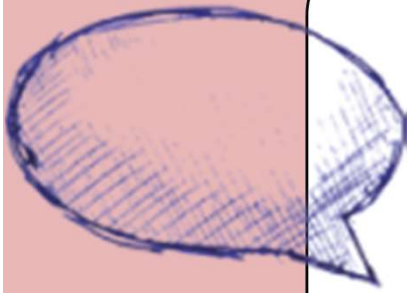
Parents and Carers are invited to attend one of the public meetings below, at which a senior manager from Education services will explain the proposals.

Please **book** a place by emailing education@birmingham.gov.uk

Please let us know before the meeting if you have any special requirements, for example; an interpreter, a hearing loop or large print materials.

DATE	VENUE
Wed 5th July 2017 10:30am-12:30	North Area: Wilson Stuart School, Perry Common Road, B23 7AT
Thurs 6th July 2017 11:00-13:00	South Area: All Saints Centre (Marjorie Allen Room), 2 Vicarage Road, Kings Heath B14 7RA
Thurs 13th July 18:00-20:00	City Centre - Birmingham City Council Offices, 10 Woodcock Street, Aston B7 4BL

Continued on the next page >



Section 2 - Have your say.

There are lots of ways to find out more and to give us your views.

You can do this by:

Schools, Settings and Colleges

Talk to your child or young person's school, setting or college to find out how they are getting involved in the consultation.

Contacting us about the consultation

If you have any questions, comments, or want to request a paper copy of the questionnaire and consultation document, please use the contact details below:



Email: **Education@birmingham.gov.uk**



Phone: **0121 303 5154**



Write to:



Birmingham's Strategy for SEND and Inclusion
PO Box 16465
Birmingham
B2 2DG