



BALL GAMES, TENNIS COURTS
Enclosed, artificial surface



ENCLOSED CRICKET SPORTS PRACTICE
All Year Round. Artificial surface.



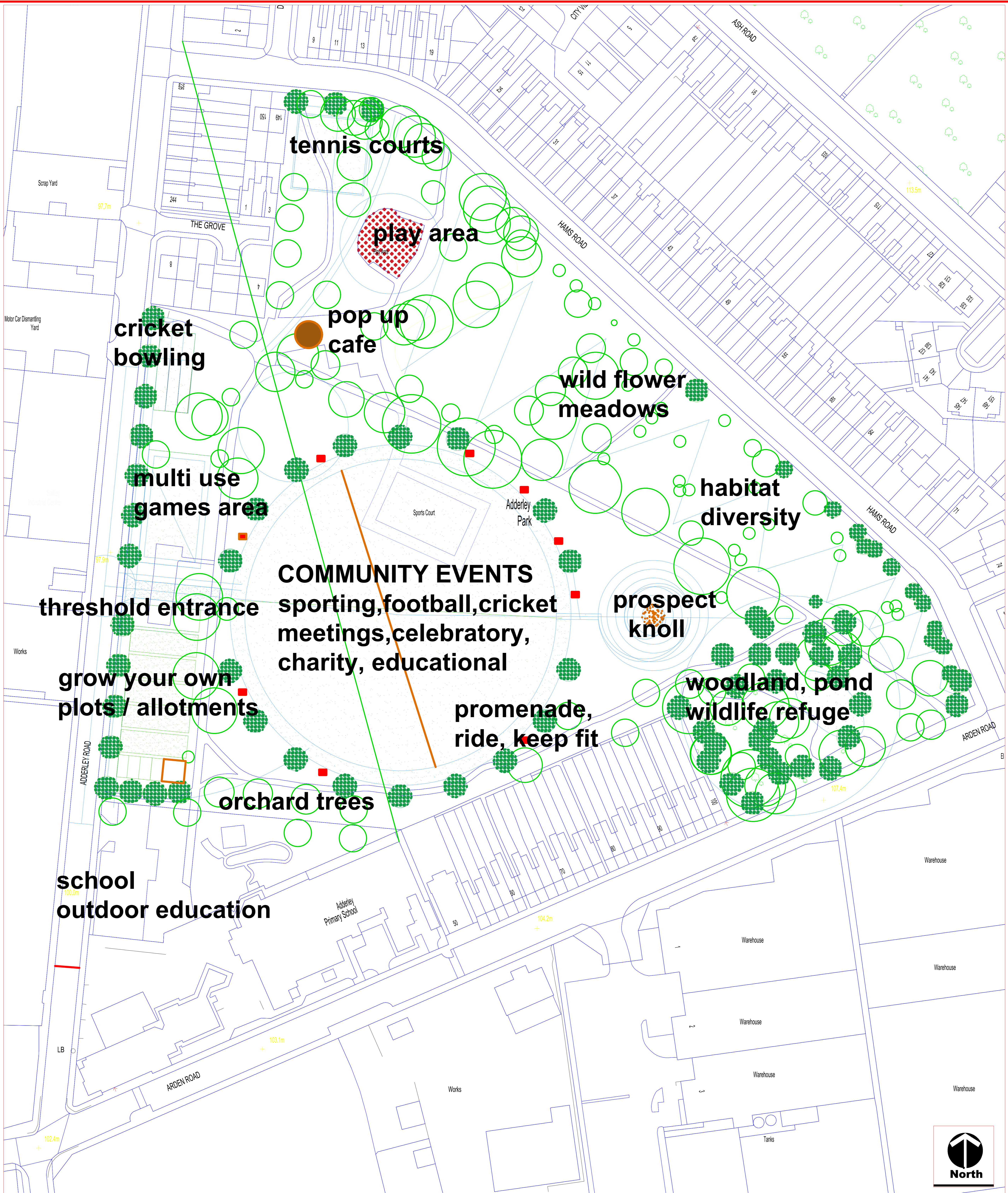
CENTRAL PROMENADE: KEEP FIT "Solar Glow"
Shared porous multi use surface facility



MULTI USE GAMES COURTS
All weather porous surfaces



HORTICULTURAL PLOTS, GROW YOUR OWN FACILITIES. Educational / Community shared resource



HABITAT CREATION, BULBS, WILD FLOWER MEADOWS



COMMUNITY EVENTS, CELEBRATION, NEIGHBORHOOD FOCUS



OCCASIONAL MEETING, 'POP UP' RETAIL FACILITIES



WILDLIFE DIVERSITY, COPSE, THICKET, MARGINAL, WETLAND

- KEY:**
- Existing trees retained
 - New proposed trees
 - Proposed keep fit apparatus

THE LANDSCAPE PRACTICE GROUP
100 Lakeside Parkway Group
Birmingham City Council
PO Box 10177
1 Lakeside Circle
Gardens, Birmingham B4 7DU
T 0121 303 2855
E info@landscapepractice.co.uk

Birmingham City Council

Client: **BCC PLANNING**

Project: **ADDERLEY PARK LANDSCAPE INVESTIGATION**

Title: **OUTLINE IDEAS FOR COMMUNITY DISCUSSION**

Drawing Number: **80517-LO2**

Scale: **A**

Author: **AD** | **NTS** | **RS** | **HW** | **15.11.22** | **Discussion**