

ALEXANDER STADIUM LEGACY AND PERRY PARK ENHANCEMENT WORKS

Welcome to the public consultation

In 2019, Birmingham City Council consulted with you on the initial redevelopment of the Alexander Stadium which became the focal point of the Birmingham 2022 Commonwealth Games. At that time, the City Council also set out its vision to deliver a true legacy asset following the event, that the city and its residents could be proud of.

Since the Games, the Council has been developing proposals which will ensure that legacy is delivered, as well as the aspirations set out in the Perry Barr 2040 Masterplan. The Council is working hard to secure additional funding to deliver all elements of the proposal.

Now we welcome your thoughts once again so we can ensure feedback is considered before a planning application is submitted later this summer.

Our ambition

We want to:

- Continue to evolve the Alexander Stadium and Perry Park as destinations that **embrace diversity, foster inclusivity, and promote equity**
- Create inviting and accessible spaces that **support community activity**
- **Contribute to the health and wellbeing** of the city's residents and visitors
- Increase the opportunity for **participation in sports, leisure, and physical activities**, including the ability to host future major events
- **Support existing and future tenants** in achieving their aspirations
- **Enhance the local biodiversity**
- **Contribute to the ambitions set out in the Perry Barr 2040 Masterplan and provide the community with a true legacy asset**



Redeveloped Alexander Stadium



Perry Reservoir viewed from the East Stand

ALEXANDER STADIUM LEGACY

A world-class, accessible facility for everyone

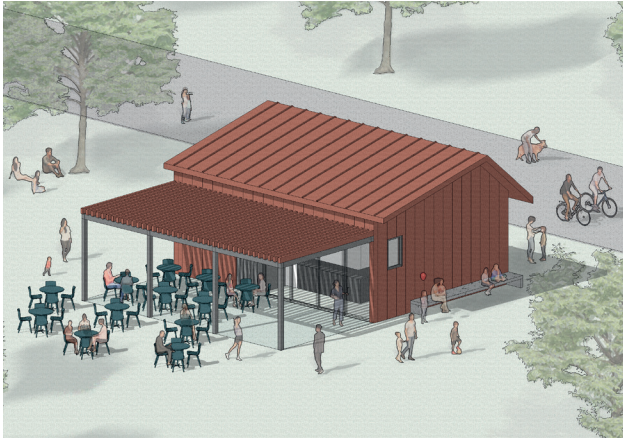
What's proposed?	Why?
Double storey extension of the Gymnastics and Martial Arts Centre (GMAC) and car park enhancements	To enable the public gym to be relocated from the East Stand To provide a new welcoming reception area To deliver changing facilities which support all users To provide electrical vehicle (EV) charging points, accessible parking spaces and a dedicated drop-off zone
A beach volleyball facility, associated seating and security fencing	To enhance and diversify the sports and leisure offer for the community, visitors and athletes
Spectator seating and accessible toilets for the existing warm-up track	To provide a better user experience and facilities
Lighting for the throws field	To improve usability
Public Address system (PA system) for the warm-up track	To support future operational and safety management requirements and better support the needs of hirers, tenants and users during events
A permanent fence line around the warm-up track, throws field, beach volleyball facility, and main stadium bowl	To provide a secure and safe venue for all
Storage facility	To securely store equipment
Southern embankment	To introduce a stretched fabric cover to the southern embankment with an option to brand
Improved access to the warm-up track	To improve experience for users
New pedestrian connection from the park to the Tame Valley Canal towpath	To improve accessibility
Redesign of the Northern Plaza (the area between the canal and Stadium bowl)	To provide a planted area and a pedestrian link to the wider park while retaining a flexible space which can be used for temporary events or sports infrastructure



Artist's impression of the proposed GMAC extension

PERRY PARK ENHANCEMENT WORKS

Welcoming, accessible and championing the local environment



Artist's impression of the café facility

Space for the community and visitors

- **A café facility** which will act as a focal point within the park.
- **Arrival gateway from Church Road** to create a welcoming entrance to the park
- **Additional lighting, street furniture and signage** to improve safety and wayfinding
- **Space to accommodate events**, including retention of the 'L' shaped access road only, from the former Spectator Transport Mall



Artist's impression of the play facility

Space for more physical activity

- **A new play facility** suitable for different age groups and abilities
- **A sensory play garden** for younger visitors to encourage interaction with local nature
- **Running and walking trails** to formalise existing routes, and enhance accessibility
- **New bridge across the stream** to facilitate access and circular walks



Artist's impression of the new bridge across the stream and surrounding planting

Space for nature to flourish

- **Additional wetland planting** around flood bund to further blend into the surrounding environment
- **Enhanced landscaping around community facilities, and planting** of semi mature trees
- **Improved access to key assets** including the Perry Reservoir, and the Tame Valley Canal

PROPOSED MASTERPLAN



ACCESS AND CONNECTIVITY

Walking and cycling

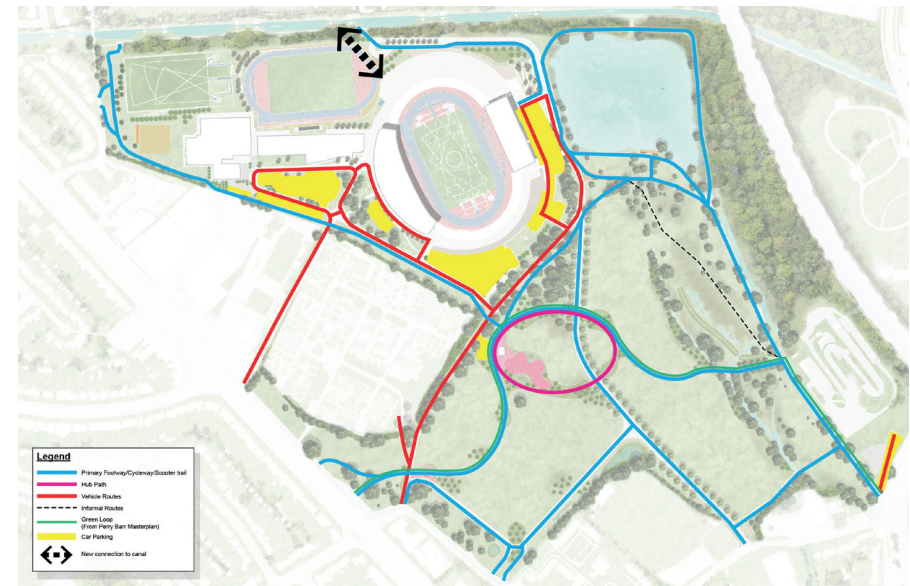
- New and enhanced trails which can be used for walking, running, cycling and scooters
- A new bridge across the stream to facilitate access and circular walks
- A formal pathway around the reservoir
- Segregation between pedestrian and vehicle movements for safety, and new signage to improve wayfinding

Vehicular access

- Vehicular access will be retained from Stadium Way and Church Road
- Retention of 'L' shaped access road only, from former Spectator Transport Mall to provide vehicular access into Perry Park on a temporary basis only during major events. When events are not being held, the route will be dedicated for use by pedestrians, cyclists and park users

Parking

- Nominal parking provision will be provided adjacent to the cafe facility to provide accessible spaces for those using the park, and dedicated parking for those visiting the play area and cafe facility
- The GMAC car park will be reconfigured to provide electrical vehicle (EV) charging points, accessible parking spaces and a dedicated drop-off zone
- The car park adjacent to the Birmingham BMX Club will be retained
- Visitors will be able to use all parking across the site



Proposed connections within Perry Park and to the surrounding area

Connectivity to the wider area

As part of the Perry Barr 2040 masterplan, a 'green loop' was proposed that connects Perry Park, Perry Hall Park and the River Tame.

Our proposals in Perry Park include pathways which can connect into the proposed 'green loop', enhancing connections between new and existing open, green spaces.

Access between the Stadium and the Tame Valley Canal will also be improved through the addition of a pathway from the Northern Plaza to the canal towpath.

WIDER BENEFITS

Proudly supporting the
United Nations



New Jobs



**Increased active travel –
walking, running and cycling**



**Social impact through construction
including apprenticeships**



Community cohesion



**Support the local economy by attracting
more visitors from home and abroad**



**Energy efficient buildings
and low water usage**



Improved health and wellbeing



**Enhanced environment, respecting
and celebrating local flora and fauna**



**Increased participation in
physical activity**

YOUR VIEWS ARE IMPORTANT TO US

Your feedback is essential in helping us to create a destination for all.

To have your say, please fill in a feedback form and post it in the box provided. Alternatively, you can complete a feedback form:

- Online via Birmingham City Council's Be Heard Consultation Hub (link provided on the right)
- At the Gymnastics & Martial Arts Centre (GMAC), Walsall Road, Perry Barr, B42 2LR (please ask at reception)
- At Tower Hill Library, Tower Hill, Birmingham, B42 1LG (please ask at reception)
- At the Library of Birmingham, Centenary Square, Broad Street, Birmingham, B1 2ND (please ask at reception)

If you would like help in understanding any of the materials, or a copy of the materials in an alternate format (in another language, braille or larger print), please contact the Stadium engagement team (email provided on the right).

The feedback deadline is Monday 14 August 2023.

Following submission of the planning application, you will have a second opportunity to review the updated design and submit your formal and final comments to Birmingham City Council.

Indicative timeline



Contact us

Email:

Stadiuminfo@Birmingham.gov.uk

Visit our website:

<https://www.birminghambeheard.org.uk/people-1/axs-and-pp>

